

For Research Use Only

# RRP1 Polyclonal antibody

Catalog Number: 14896-1-AP

Featured Product

1 Publications



## Basic Information

### Catalog Number:

14896-1-AP

### Size:

150ul, Concentration: 350 ug/ml by Nanodrop and 240 ug/ml by Bradford method using BSA as the standard;

### Source:

Rabbit

### Isotype:

IgG

### Immunogen Catalog Number:

AG6686

### GenBank Accession Number:

BC000380

### GeneID (NCBI):

8568

### UNIPROT ID:

P56182

### Full Name:

ribosomal RNA processing 1 homolog (S. cerevisiae)

### Calculated MW:

53 kDa

### Observed MW:

53 kDa

### Purification Method:

Antigen affinity purification

### Recommended Dilutions:

WB 1:1000-1:4000

IF/ICC 1:20-1:200

## Applications

### Tested Applications:

WB, IF/ICC, ELISA

### Cited Applications:

WB

### Species Specificity:

human

### Cited Species:

human

### Positive Controls:

WB : HEK-293 cells, HeLa cells, human spleen tissue

IF/ICC : HeLa cells,

## Notable Publications

| Author       | Pubmed ID | Journal                    | Application |
|--------------|-----------|----------------------------|-------------|
| Yuya Hirooka | 39706051  | Biochem Biophys Res Commun | WB          |

## Storage

### Storage:

Store at -20°C. Stable for one year after shipment.

### Storage Buffer:

PBS with 0.02% sodium azide and 50% glycerol, pH7.3

Aliquoting is unnecessary for -20°C storage

\*\*\* 20ul sizes contain 0.1% BSA

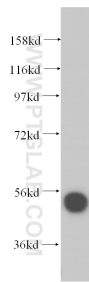
For technical support and original validation data for this product please contact:

T: 1 (888) 4PTGLAB (1-888-478-4522) (toll free in USA), or 1(312) 455-8498 (outside USA)

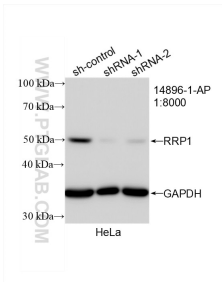
E: [proteintech@ptglab.com](mailto:proteintech@ptglab.com)  
W: [ptglab.com](http://ptglab.com)

This product is exclusively available under Proteintech Group brand and is not available to purchase from any other manufacturer.

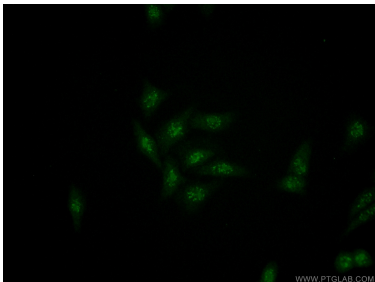
## Selected Validation Data



HEK-293 cells were subjected to SDS PAGE followed by western blot with 14896-1-AP (RRP1 antibody) at dilution of 1:500 incubated at room temperature for 1.5 hours.



WB result of RRP1 antibody (14896-1-AP; 1:8000; incubated at room temperature for 1.5 hours) with sh-Control and sh-RRP1 transfected HeLa cells.



Immunofluorescent analysis of HeLa cells using 14896-1-AP (RRP1 antibody) at dilution of 1:50 and Alexa Fluor 488-conjugated Goat Anti-Rabbit IgG(H+L).