

For Research Use Only

NTHL1 Polyclonal antibody

Catalog Number: 14918-1-AP

2 Publications



Basic Information

Catalog Number:

14918-1-AP

Size:

150ul, Concentration: 300 ug/ml by Nanodrop;

Source:

Rabbit

Isotype:

IgG

Immunogen Catalog Number:

AG6734

GenBank Accession Number:

BC000391

GeneID (NCBI):

4913

UNIPROT ID:

P78549

Full Name:

nth endonuclease III-like 1 (E. coli)

Calculated MW:

34 kDa

Observed MW:

34 kDa

Purification Method:

Antigen affinity purification

Recommended Dilutions:

WB 1:500-1:2000

IP 0.5-4.0 ug for 1.0-3.0 mg of total protein lysate

Applications

Tested Applications:

WB, IP, ELISA

Cited Applications:

WB

Species Specificity:

human, mouse, rat

Cited Species:

human

Positive Controls:

WB : HEK-293 cells, Y79 cells, HeLa cells, K-562 cells

IP : Y79 cells,

Background Information

NTHL1, also named as Endonuclease III-like protein 1 or OCTS3, is a 312 amino acid protein, which belongs to the Nth/MutY family. NTHL1 localizes in the nucleus and is widely expressed with highest levels in heart and lowest levels in lung and liver. NTHL1 Has both an apurinic and/or apyrimidinic endonuclease activity and a DNA N-glycosylase activity and incises damaged DNA at cytosines, thymines and guanines. NTHL1 acts on a damaged strand, 5' from the damaged site and is required for the repair of both oxidative DNA damage and spontaneous mutagenic lesions.

Notable Publications

Author	Pubmed ID	Journal	Application
Shangming Tang	35477155	Nature	WB
Nathan P Ward	38762605	Nat Commun	WB

Storage

Storage:

Store at -20°C. Stable for one year after shipment.

Storage Buffer:

PBS with 0.02% sodium azide and 50% glycerol pH 7.3.

Aliquoting is unnecessary for -20°C storage

*** 20ul sizes contain 0.1% BSA

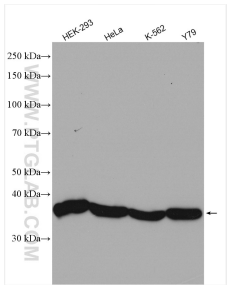
For technical support and original validation data for this product please contact:

T: 1 (888) 4PTGLAB (1-888-478-4522) (toll free in USA), or 1(312) 455-8498 (outside USA)

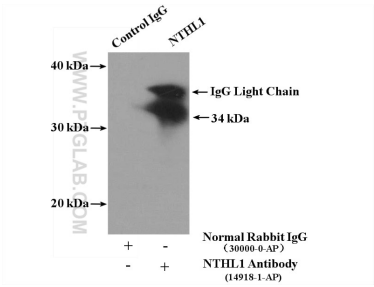
E: proteintech@ptglab.com
W: ptglab.com

This product is exclusively available under Proteintech Group brand and is not available to purchase from any other manufacturer.

Selected Validation Data



Various lysates were subjected to SDS PAGE followed by western blot with 14918-1-AP (NTHL1 antibody) at dilution of 1:1000 incubated at room temperature for 1.5 hours.



IP result of anti-NTHL1 (IP:14918-1-AP, 4ug; Detection:14918-1-AP 1:500) with Y79 cells lysate 2000ug.