

For Research Use Only

# THUMPD1 Polyclonal antibody

Catalog Number: 14921-1-AP

3 Publications



## Basic Information

### Catalog Number:

14921-1-AP

### Size:

150ul, Concentration: 160 ug/ml by Nanodrop and 153 ug/ml by Bradford method using BSA as the standard;

### Source:

Rabbit

### Isotype:

IgG

### Immunogen Catalog Number:

AG6739

### GenBank Accession Number:

BC000448

### GeneID (NCBI):

55623

### UNIPROT ID:

Q9NXG2

### Full Name:

THUMP domain containing 1

### Calculated MW:

39 kDa

### Observed MW:

49 kDa

### Purification Method:

Antigen affinity purification

### Recommended Dilutions:

WB 1:2000-1:10000

IHC 1:50-1:500

IF/ICC 1:50-1:500

## Applications

### Tested Applications:

WB, IHC, IF/ICC, ELISA

### Cited Applications:

WB, IHC, IF

### Species Specificity:

human, mouse, rat

### Cited Species:

human

**Note-IHC: suggested antigen retrieval with TE buffer pH 9.0; (\*) Alternatively, antigen retrieval may be performed with citrate buffer pH 6.0**

### Positive Controls:

WB : HeLa cells, K-562 cells, MCF-7 cells

IHC : human breast cancer tissue,

IF/ICC : MCF-7 cells,

## Notable Publications

Author	Pubmed ID	Journal	Application
Kuangxun Li	34762107	Biosci Rep	IF
Qin Yan	38879723	Cell Death Differ	WB
Hui Han	38487015	iScience	IHC

## Storage

### Storage:

Store at -20°C. Stable for one year after shipment.

### Storage Buffer:

PBS with 0.02% sodium azide and 50% glycerol pH 7.3.

Aliquoting is unnecessary for -20°C storage

\*\*\* 20ul sizes contain 0.1% BSA

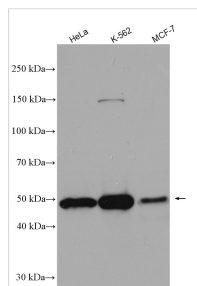
For technical support and original validation data for this product please contact:

T: 1 (888) 4PTGLAB (1-888-478-4522) (toll free in USA), or 1(312) 455-8498 (outside USA)

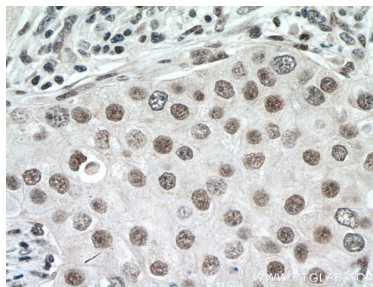
E: [proteintech@ptglab.com](mailto:proteintech@ptglab.com)  
W: [ptglab.com](http://ptglab.com)

This product is exclusively available under Proteintech Group brand and is not available to purchase from any other manufacturer.

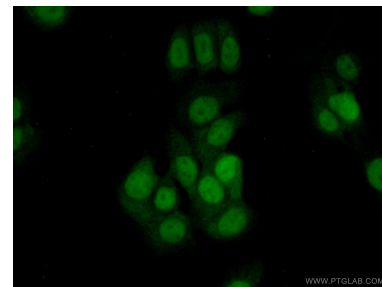
## Selected Validation Data



Various lysates were subjected to SDS PAGE followed by western blot with 14921-1-AP (THUMP1 antibody) at dilution of 1:5000 incubated at room temperature for 1.5 hours.



Immunohistochemical analysis of paraffin-embedded human breast cancer tissue slide using 14921-1-AP (THUMP1 antibody) at dilution of 1:200 (under 40x lens. Heat mediated antigen retrieval with Tris-EDTA buffer (pH 9.0).



Immunofluorescent analysis of (10% Formaldehyde) fixed MCF-7 cells using 14921-1-AP (THUMP1 antibody) at dilution of 1:50 and Alexa Fluor 488-conjugated Goat Anti-Rabbit IgG(H+L).