

For Research Use Only

SUCLG1 Polyclonal antibody

Catalog Number: 14923-1-AP **11 Publications**



Basic Information

Catalog Number: 14923-1-AP	GenBank Accession Number: BC000504	Purification Method: Antigen affinity purification
Size: 150ul , Concentration: 450 ug/ml by Nanodrop;	GeneID (NCBI): 8802	Recommended Dilutions: WB: 1:5000-1:10000 IP: 0.5-4.0 ug for 1.0-3.0 mg of total protein lysate IHC: 1:50-1:500
Source: Rabbit	UNIPROT ID: P53597	
Isotype: IgG	Full Name: succinate-CoA ligase, alpha subunit	
Immunogen Catalog Number: AG6481	Calculated MW: 35 kDa	
	Observed MW: 35 kDa	

Applications

Tested Applications: WB, IP, IHC, ELISA	Positive Controls: WB : HepG2 cells, rat liver tissue IP : mouse kidney tissue, IHC : mouse kidney tissue, human liver cancer tissue
Cited Applications: WB, IHC, IP	
Species Specificity: human, mouse, rat	
Cited Species: human, mouse, rat	
Note-IHC: suggested antigen retrieval with TE buffer pH 9.0; (*) Alternatively, antigen retrieval may be performed with citrate buffer pH 6.0	

Background Information

SUCLG1(succinyl-CoA ligase [ADP/GDP-forming] subunit alpha, mitochondrial) is also named as SCS-alpha and belongs to the succinate/malate CoA ligase alpha subunit family. The SUCLG1 gene encodes a 35 kDa protein with a 40 amino acids transit peptide. This enzyme catalyzes the ATP- or GTP-dependent ligation of succinate and CoA to form succinyl-CoA. Defects in SUCLG1 are the cause of mitochondrial DNA depletion syndrome type 9 (MTDPS9).

Notable Publications

Author	Pubmed ID	Journal	Application
Sophie Trefely	34856123	Mol Cell	WB
Pengkai Sun	36333306	Nat Commun	WB
Xin Liu	34998831	J Mol Cell Cardiol	WB,IP

Storage

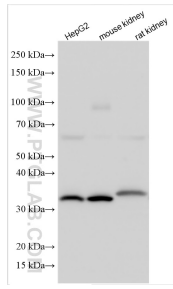
Storage:
Store at -20°C. Stable for one year after shipment.
Storage Buffer:
PBS with 0.02% sodium azide and 50% glycerol, pH7.3
Aliquoting is unnecessary for -20°C storage

*** 20ul sizes contain 0.1% BSA

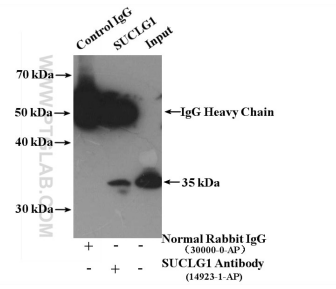
For technical support and original validation data for this product please contact:
T: 1 (888) 4PTGLAB (1-888-478-4522) (toll free in USA), or 1(312) 455-8498 (outside USA)
E: proteintech@ptglab.com
W: ptglab.com

This product is exclusively available under Proteintech Group brand and is not available to purchase from any other manufacturer.

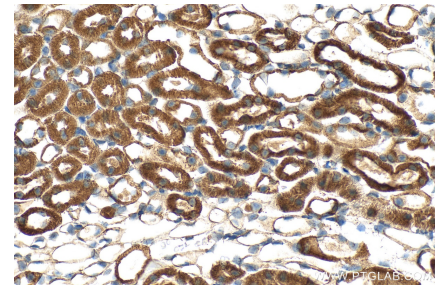
Selected Validation Data



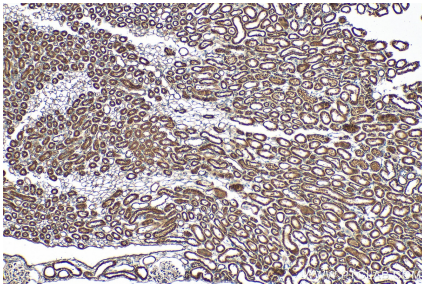
HepG2 cells were subjected to SDS PAGE followed by western blot with 14923-1-AP (SUCLG1 antibody) at dilution of 1:20000 incubated at room temperature for 1.5 hours.



IP result of anti-SUCLG1 (IP:14923-1-AP, 4ug; Detection:14923-1-AP 1:500) with mouse kidney tissue lysate 2800 ug.



Immunohistochemical analysis of paraffin-embedded mouse kidney tissue slide using 14923-1-AP (SUCLG1 antibody) at dilution of 1:200 (under 40x lens). Heat mediated antigen retrieval with Tris-EDTA buffer (pH 9.0).



Immunohistochemical analysis of paraffin-embedded mouse kidney tissue slide using 14923-1-AP (SUCLG1 antibody) at dilution of 1:200 (under 10x lens). Heat mediated antigen retrieval with Tris-EDTA buffer (pH 9.0).