

For Research Use Only

KARS Polyclonal antibody

Catalog Number: 14951-1-AP

Featured Product

10 Publications



Basic Information

Catalog Number:

14951-1-AP

Size:

150ul, Concentration: 500 µg/ml by Nanodrop and 313 µg/ml by Bradford method using BSA as the standard;

Source:

Rabbit

Isotype:

IgG

Immunogen Catalog Number:

AG6778

GenBank Accession Number:

BC004132

GeneID (NCBI):

3735

Full Name:

lysyl-tRNA synthetase

Calculated MW:

68 kDa

Observed MW:

68 kDa

Purification Method:

Antigen affinity purification

Recommended Dilutions:

WB 1:1000-1:4000

IHC 1:20-1:200

IF 1:50-1:500

Applications

Tested Applications:

IF, IHC, WB, ELISA

Cited Applications:

IF, WB

Species Specificity:

human

Cited Species:

human, mouse, zebrafish

Note-IHC: suggested antigen retrieval with TE buffer pH 9.0; (*) Alternatively, antigen retrieval may be performed with citrate buffer pH 6.0

Positive Controls:

WB : HEK-293T cells, Jurkat cells, human colon tissue, HeLa cells, HepG2 cells

IHC : human placenta tissue,

IF : A431 cells,

Background Information

Notable Publications

Author	Pubmed ID	Journal	Application
Benedetta Ruzzenente	30252186	Hum Mutat	WB
Krishnendu Khan	36037331	Proc Natl Acad Sci U S A	WB,IF
Daniela Verrigni	27891585	Clin Genet	WB

Storage

Storage:

Store at -20°C. Stable for one year after shipment.

Storage Buffer:

PBS with 0.02% sodium azide and 50% glycerol pH 7.3.

Aliquoting is unnecessary for -20°C storage

*** 20ul sizes contain 0.1% BSA

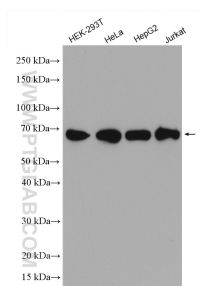
For technical support and original validation data for this product please contact:

T: 1 (888) 4PTGLAB (1-888-478-4522) (toll free in USA), or 1(312) 455-8498 (outside USA)

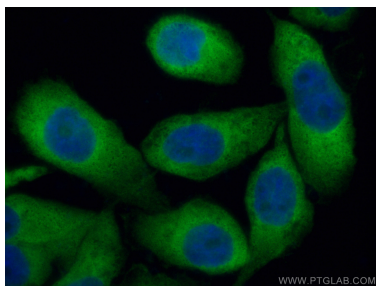
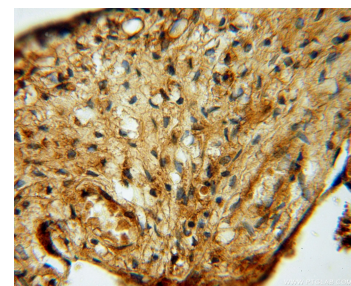
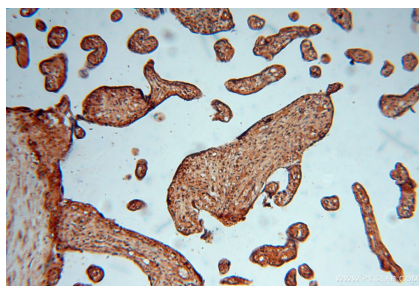
E: proteintech@ptglab.com
W: ptglab.com

This product is exclusively available under Proteintech Group brand and is not available to purchase from any other manufacturer.

Selected Validation Data



Various lysates were subjected to SDS PAGE followed by western blot with 14951-1-AP (KARS antibody) at dilution of 1:2000 incubated at room temperature for 1.5 hours.



Immunofluorescent analysis of (4% PFA) fixed A431 cells using KARS antibody (14951-1-AP) at dilution of 1:200 and CoraLite® 488-Conjugated AffiniPure Goat Anti-Rabbit IgG(H+L).