

For Research Use Only

RBM8A,Y14 Polyclonal antibody

Catalog Number:14958-1-AP

Featured Product

5 Publications



Basic Information

Catalog Number:

14958-1-AP

Size:

150ul , Concentration: 450 ug/ml by Nanodrop and 220 ug/ml by Bradford method using BSA as the standard;

Source:

Rabbit

Isotype:

IgG

Immunogen Catalog Number:

AG6800

GenBank Accession Number:

BC017088

GeneID (NCBI):

9939

UNIPROT ID:

Q9Y5S9

Full Name:

RNA binding motif protein 8A

Calculated MW:

20 kDa

Observed MW:

24 kDa

Purification Method:

Antigen affinity purification

Recommended Dilutions:

WB 1:500-1:3000

IP 0.5-4.0 ug for 1.0-3.0 mg of total protein lysate

IHC 1:50-1:500

IF/ICC 1:200-1:800

Applications

Tested Applications:

WB, IHC, IF/ICC, IP, ELISA

Cited Applications:

WB, IHC, IF

Species Specificity:

human, mouse, rat

Cited Species:

human, mouse

Note-IHC: suggested antigen retrieval with TE buffer pH 9.0; (*) Alternatively, antigen retrieval may be performed with citrate buffer pH 6.0

Positive Controls:

WB : HEK-293T cells, Jurkat cells, HeLa cells, MDA-MB-453s cells

IP : HeLa cells,

IHC : human brain tissue, human spleen tissue, human testis tissue, human ovary tissue

IF/ICC : HeLa cells,

Notable Publications

Author	Pubmed ID	Journal	Application
Yan Lin	34804926	Front Oncol	WB,IHC
Xiaojin Song	35568705	Cell Death Discov	WB
Mi Kyung Park	34879239	Cell Metab	WB

Storage

Storage:

Store at -20°C. Stable for one year after shipment.

Storage Buffer:

PBS with 0.02% sodium azide and 50% glycerol pH 7.3.

Aliquoting is unnecessary for -20°C storage

*** 20ul sizes contain 0.1% BSA

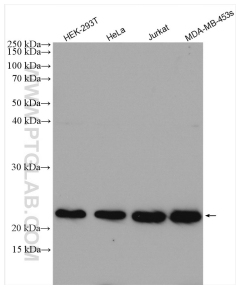
For technical support and original validation data for this product please contact:

T: 1 (888) 4PTGLAB (1-888-478-4522) (toll free in USA), or 1(312) 455-8498 (outside USA)

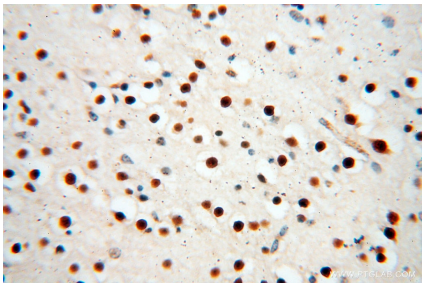
E: proteintech@ptglab.com
W: ptglab.com

This product is exclusively available under Proteintech Group brand and is not available to purchase from any other manufacturer.

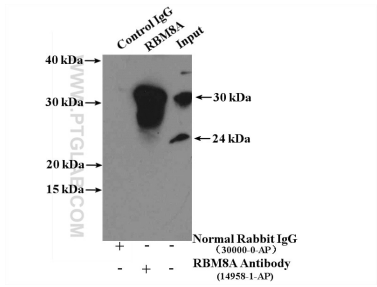
Selected Validation Data



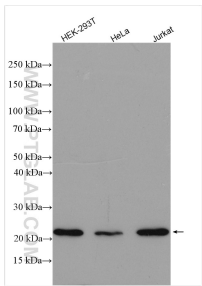
Various lysates were subjected to SDS PAGE followed by western blot with 14958-1-AP (RBM8A,Y14 antibody) at dilution of 1:1500 incubated at room temperature for 1.5 hours.



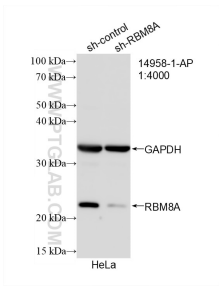
Immunohistochemical analysis of paraffin-embedded human brain using 14958-1-AP (RBM8A,Y14 antibody) at dilution of 1:100 (under 40x lens).



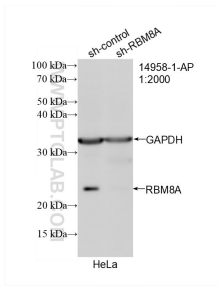
IP result of anti-RBM8A,Y14 (IP:14958-1-AP, 4ug; Detection:14958-1-AP 1:500) with HeLa cells lysate 3200ug.



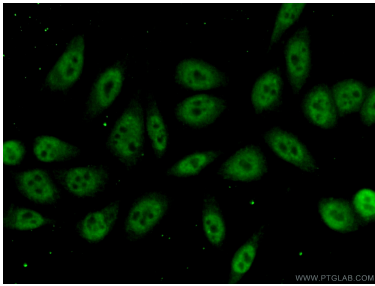
Various lysates were subjected to SDS PAGE followed by western blot with 14958-1-AP (RBM8A,Y14 antibody) at dilution of 1:3000 incubated at room temperature for 1.5 hours.



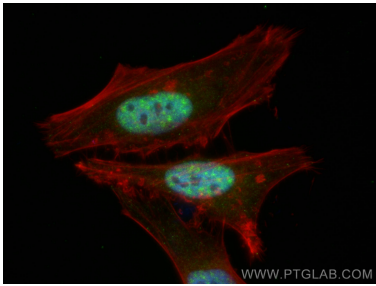
WB result of RBM8A,Y14 antibody (14958-1-AP; 1:4000; incubated at room temperature for 1.5 hours) with sh-Control and sh-RBM8A,Y14 transfected HeLa cells.



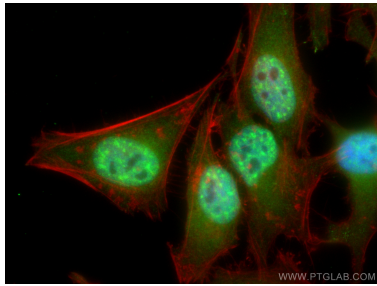
WB result of RBM8A,Y14 antibody (14958-1-AP; 1:2000; incubated at room temperature for 1.5 hours) with sh-Control and sh-RBM8A,Y14 transfected HeLa cells.



Immunofluorescent analysis of (10% Formaldehyde) fixed HeLa cells using 14958-1-AP (RBM8A,Y14 antibody) at dilution of 1:50 and Alexa Fluor 488-conjugated AffiniPure Goat Anti-Rabbit IgG(H+L).



Immunofluorescent analysis of (4% PFA) fixed HeLa cells using RBM8A,Y14 antibody (14958-1-AP) at dilution of 1:400 and CoraLite®488-Conjugated AffiniPure Goat Anti-Rabbit IgG(H+L), CL594-Phalloidin (red).



Immunofluorescent analysis of (4% PFA) fixed HeLa cells using RBM8A,Y14 antibody (14958-1-AP) at dilution of 1:400 and CoraLite®488-Conjugated AffiniPure Goat Anti-Rabbit IgG(H+L), CL594-phalloidin (red).