

For Research Use Only

# SERPINB6 Polyclonal antibody

Catalog Number: 14962-1-AP

Featured Product

5 Publications



## Basic Information

### Catalog Number:

14962-1-AP

### Size:

150ul, Concentration: 450 ug/ml by Nanodrop and 240 ug/ml by Bradford method using BSA as the standard;

### Source:

Rabbit

### Isotype:

IgG

### Immunogen Catalog Number:

AG6824

### GenBank Accession Number:

BC001394

### GeneID (NCBI):

5269

### UNIPROT ID:

P35237

### Full Name:

serpin peptidase inhibitor, clade B (ovalbumin), member 6

### Calculated MW:

43 kDa

### Observed MW:

42 kDa

### Purification Method:

Antigen affinity purification

### Recommended Dilutions:

WB 1:2000-1:18000

IP 0.5-4.0 ug for 1.0-3.0 mg of total protein lysate

IHC 1:20-1:200

IF/ICC 1:50-1:500

## Applications

### Tested Applications:

WB, IHC, IF/ICC, IP, ELISA

### Cited Applications:

WB, IHC

### Species Specificity:

human, mouse

### Cited Species:

human, mouse

**Note-IHC: suggested antigen retrieval with TE buffer pH 9.0; (\*) Alternatively, antigen retrieval may be performed with citrate buffer pH 6.0**

### Positive Controls:

WB : HeLa cells, human placenta tissue, mouse skeletal muscle tissue, HepG2 cells, MCF-7 cells

IP : human placenta tissue,

IHC : human skeletal muscle tissue,

IF/ICC : HeLa cells,

## Notable Publications

Author	Pubmed ID	Journal	Application
Flora Cozzolino	32886703	PLoS One	WB
Yu-Jie Zhou	36216310	Cell Mol Gastroenterol Hepatol	WB,IHC
Hiroki Nakata	28455723	Cell Tissue Res	WB

## Storage

### Storage:

Store at -20°C. Stable for one year after shipment.

### Storage Buffer:

PBS with 0.02% sodium azide and 50% glycerol pH 7.3.

Aliquoting is unnecessary for -20°C storage

\*\*\* 20ul sizes contain 0.1% BSA

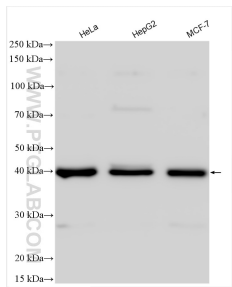
For technical support and original validation data for this product please contact:

T: 1 (888) 4PTGLAB (1-888-478-4522) (toll free in USA), or 1(312) 455-8498 (outside USA)

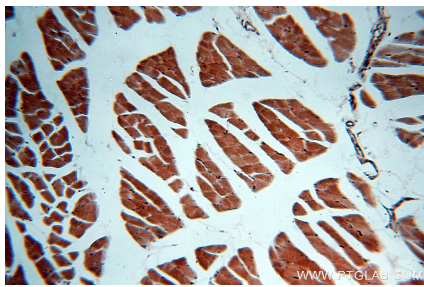
E: [proteintech@ptglab.com](mailto:proteintech@ptglab.com)  
W: [ptglab.com](http://ptglab.com)

This product is exclusively available under Proteintech Group brand and is not available to purchase from any other manufacturer.

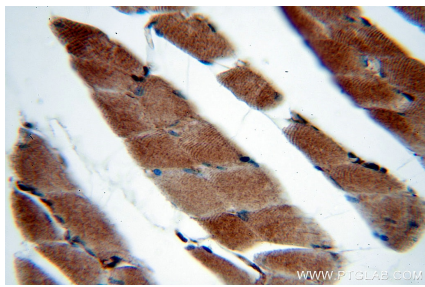
Selected Validation Data



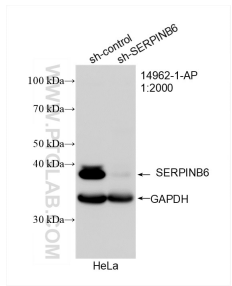
Various lysates were subjected to SDS PAGE followed by western blot with 14962-1-AP (SERPINB6 antibody) at dilution of 1:9000 incubated at room temperature for 1.5 hours.



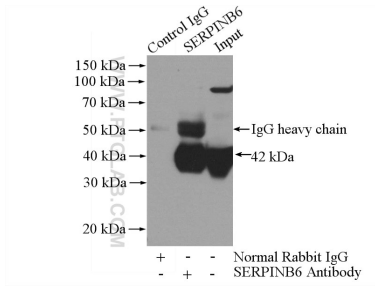
Immunohistochemical analysis of paraffin-embedded human skeletal muscle using 14962-1-AP (SERPINB6 antibody) at dilution of 1:50 (under 10x lens).



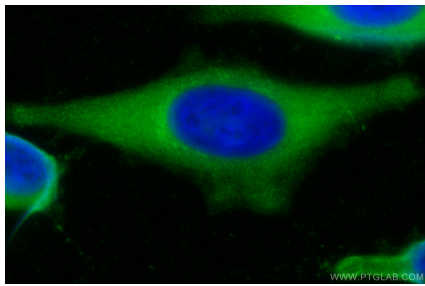
Immunohistochemical analysis of paraffin-embedded human skeletal muscle using 14962-1-AP (SERPINB6 antibody) at dilution of 1:50 (under 40x lens).



WB result of SERPINB6 antibody (14962-1-AP; 1:2000; incubated at room temperature for 1.5 hours) with sh-Control and sh-SERPINB6 transfected HeLa cells.



IP result of anti-SERPINB6 (IP:14962-1-AP, 4ug; Detection:14962-1-AP 1:500) with human placenta tissue lysate 1520ug.



Immunofluorescent analysis of (-20°C Methanol) fixed HeLa cells using SERPINB6 antibody (14962-1-AP) at dilution of 1:200 and CoraLite®488-Conjugated AffiniPure Goat Anti-Rabbit IgG(H+L).