

For Research Use Only

MGLL Polyclonal antibody

Catalog Number: 14986-1-AP

Featured Product

12 Publications



Basic Information

Catalog Number:

14986-1-AP

Size:

150ul, Concentration: 500 ug/ml by Nanodrop;

Source:

Rabbit

Isotype:

IgG

Immunogen Catalog Number:

AG6970

GenBank Accession Number:

BC000551

GeneID (NCBI):

11343

UNIPROT ID:

Q99685

Full Name:

monoglyceride lipase

Calculated MW:

33 kDa

Observed MW:

33 kDa

Purification Method:

Antigen affinity purification

Recommended Dilutions:

WB 1:300-1:600

IP 0.5-4.0 ug for 1.0-3.0 mg of total protein lysate

IHC 1:250-1:1000

Applications

Tested Applications:

WB, IHC, IP, ELISA

Cited Applications:

WB, IHC

Species Specificity:

human, mouse, rat

Cited Species:

human, mouse, rat

Positive Controls:

WB : HepG2 cells, L02 cells, SMMC-7721 cells

IP : mouse liver tissue,

IHC : human liver tissue, human kidney tissue

Note-IHC: suggested antigen retrieval with TE buffer pH 9.0; (*) Alternatively, antigen retrieval may be performed with citrate buffer pH 6.0

Background Information

MGLL (monoglyceride lipase) is also named as MAGL, HU-K5 and belongs to the monoacylglycerol lipase family. It converts monoacylglycerides to free fatty acids and glycerol and functions together with hormone-sensitive lipase (HSL) in the mobilization of fatty acids from the triglyceride stores of adipocytes. MGL protein is ubiquitously expressed in kidney, spleen, heart, liver, stomach, brain, lung, adrenal gland, adipose tissue and in brain, there are two bands of 33 kDa and 35 kDa can be detected. The single protein species expressed in muscle is larger (around 40 kDa) (PMID:11470505). This protein can exist as a homodimer (PMID:19957260).

Notable Publications

Author	Pubmed ID	Journal	Application
Jinming Zhang	32198011	Neuroscience	WB
Shuting Xia	27296803	Elife	WB
Xintian Chen	36694250	J Exp Clin Cancer Res	WB, IHC

Storage

Storage:

Store at -20°C. Stable for one year after shipment.

Storage Buffer:

PBS with 0.02% sodium azide and 50% glycerol, pH7.3

Aliquoting is unnecessary for -20°C storage

*** 20ul sizes contain 0.1% BSA

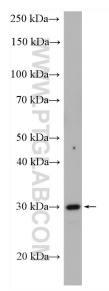
For technical support and original validation data for this product please contact:

T: 1 (888) 4PTGLAB (1-888-478-4522) (toll free in USA), or 1(312) 455-8498 (outside USA)

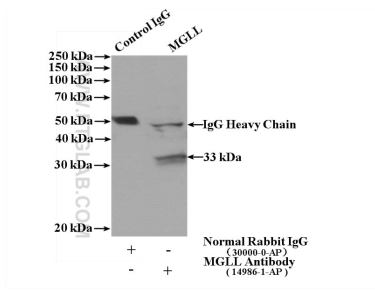
E: proteintech@ptglab.com
W: ptglab.com

This product is exclusively available under Proteintech Group brand and is not available to purchase from any other manufacturer.

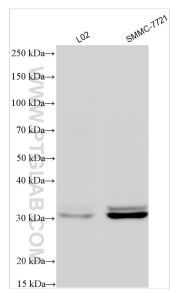
Selected Validation Data



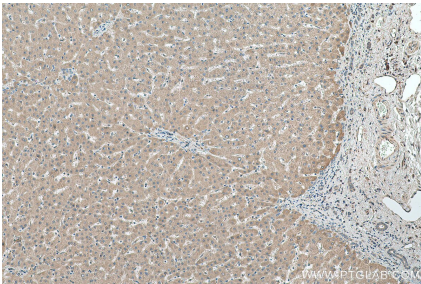
HepG2 cells were subjected to SDS PAGE followed by western blot with 14986-1-AP (MGLL antibody) at dilution of 1:600 incubated at room temperature for 1.5 hours.



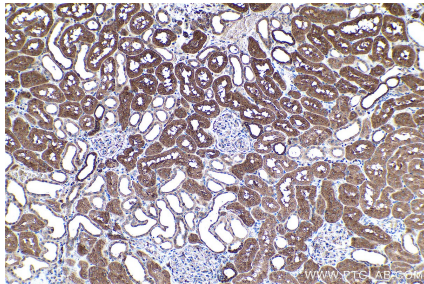
IP result of anti-MGLL (IP:14986-1-AP, 4ug; Detection:14986-1-AP 1:300) with mouse liver tissue lysate 4000ug.



Various lysates were subjected to SDS PAGE followed by western blot with 14986-1-AP (MGLL antibody) at dilution of 1:800 incubated at room temperature for 1.5 hours.



Immunohistochemical analysis of paraffin-embedded human liver tissue slide using 14986-1-AP (MGLL antibody) at dilution of 1:500 (under 10x lens). Heat mediated antigen retrieval with Tris-EDTA buffer (pH 9.0).



Immunohistochemical analysis of paraffin-embedded human kidney tissue slide using 14986-1-AP (MGLL antibody) at dilution of 1:2000 (under 10x lens). Heat mediated antigen retrieval with Tris-EDTA buffer (pH 9.0).