

For Research Use Only

RPL39 Polyclonal antibody

Catalog Number: 14990-1-AP

Featured Product

8 Publications



Basic Information

Catalog Number:

14990-1-AP

Size:

150ul, Concentration: 550 ug/ml by Nanodrop;

Source:

Rabbit

Isotype:

IgG

Immunogen Catalog Number:

AG6975

GenBank Accession Number:

BC001019

GeneID (NCBI):

6170

UNIPROT ID:

P62891

Full Name:

ribosomal protein L39

Calculated MW:

6 kDa

Observed MW:

6 kDa

Purification Method:

Antigen affinity purification

Recommended Dilutions:

WB 1:500-1:2000

IHC 1:20-1:200

IF/ICC 1:200-1:800

Applications

Tested Applications:

WB, IHC, IF/ICC, ELISA

Cited Applications:

WB, IHC, IP, IF

Species Specificity:

human

Cited Species:

human, mouse, zebrafish

Note-IHC: suggested antigen retrieval with TE buffer pH 9.0; (*) Alternatively, antigen retrieval may be performed with citrate buffer pH 6.0

Positive Controls:

WB : HepG2 cells, human liver tissue

IHC : human liver cancer tissue,

IF/ICC : HepG2 cells,

Notable Publications

Author	Pubmed ID	Journal	Application
Shiao Tong	36248799	Front Immunol	WB,IHC,IF
Qianxing Zou	34825148	iScience	WB,IP,IF
Kai Ma	35637200	Cell Discov	IF

Storage

Storage:

Store at -20°C. Stable for one year after shipment.

Storage Buffer:

PBS with 0.02% sodium azide and 50% glycerol pH 7.3.

Aliquoting is unnecessary for -20°C storage

*** 20ul sizes contain 0.1% BSA

For technical support and original validation data for this product please contact:

T: 1 (888) 4PTGLAB (1-888-478-4522) (toll free in USA), or 1(312) 455-8498 (outside USA)

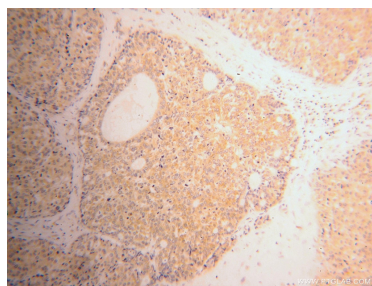
E: proteintech@ptglab.com
W: ptglab.com

This product is exclusively available under Proteintech Group brand and is not available to purchase from any other manufacturer.

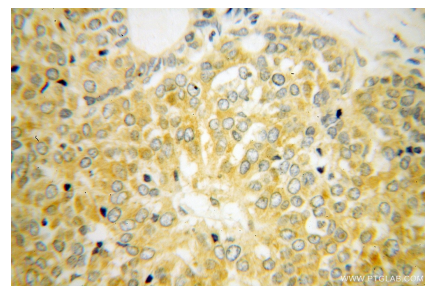
Selected Validation Data



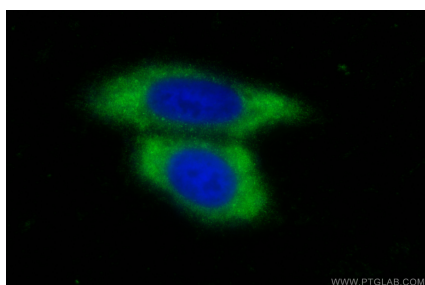
HepG2 cells were subjected to SDS PAGE followed by western blot with 14990-1-AP (RPL39 antibody) at dilution of 1:300 incubated at room temperature for 1.5 hours.



Immunohistochemical analysis of paraffin-embedded human liver cancer using 14990-1-AP (RPL39 antibody) at dilution of 1:100 (under 10x lens).



Immunohistochemical analysis of paraffin-embedded human liver cancer using 14990-1-AP (RPL39 antibody) at dilution of 1:100 (under 40x lens).



Immunofluorescent analysis of (-20°C Ethanol) fixed HepG2 cells using RPL39 antibody (14990-1-AP) at dilution of 1:400 and CoraLite®488-Conjugated Goat Anti-Rabbit IgG(H+L).