

For Research Use Only

DDA1 Polyclonal antibody

Catalog Number: 14995-1-AP

Featured Product

6 Publications



Basic Information

Catalog Number:

14995-1-AP

Size:

150ul, Concentration: 850 ug/ml by Nanodrop and 393 ug/ml by Bradford method using BSA as the standard;

Source:

Rabbit

Isotype:

IgG

Immunogen Catalog Number:

AG6981

GenBank Accession Number:

BC000615

GeneID (NCBI):

79016

UNIPROT ID:

Q9BW61

Full Name:

DET1 and DDB1 associated 1

Calculated MW:

12 kDa

Observed MW:

12 kDa

Purification Method:

Antigen affinity purification

Recommended Dilutions:

WB 1:500-1:2000

IP 0.5-4.0 ug for 1.0-3.0 mg of total protein lysate

IHC 1:500-1:2000

IF/ICC 1:300-1:1200

Applications

Tested Applications:

WB, IHC, IF/ICC, FC (Intra), IP, ELISA

Cited Applications:

WB, IHC, IF, IP

Species Specificity:

human, mouse

Cited Species:

human, mouse

Note-IHC: suggested antigen retrieval with TE buffer pH 9.0; (*) Alternatively, antigen retrieval may be performed with citrate buffer pH 6.0

Positive Controls:

WB : HepG2 cells, mouse liver tissue, HeLa cells

IP : HepG2 cells,

IHC : human lung cancer tissue,

IF/ICC : HepG2 cells,

Background Information

DDA1, also known as C19orf58 and PCIA1, belongs to the DDA1 family. DDA1 is an evolutionarily conserved gene located at 19p13.11 that may be involved in the activation of nuclear factor kappaB (NFkB). DDA1 encodes an 12 kDa protein with 102 AA residues whose orthologs share 82-92% identity with Arabidopsis, invertebrates, and vertebrates. Additionally, DDA1 might be involved in tumour formation and progression (PMID: 26942699, 28211159).

Notable Publications

Author	Pubmed ID	Journal	Application
Luca Rizzini	31155351	Curr Biol	IP, WB
Ting Han	28302793	Science	WB
Lucía Zhu	35174975	EMBO Mol Med	IHC,IF

Storage

Storage:

Store at -20°C. Stable for one year after shipment.

Storage Buffer:

PBS with 0.02% sodium azide and 50% glycerol pH 7.3.

Aliquoting is unnecessary for -20°C storage

*** 20ul sizes contain 0.1% BSA

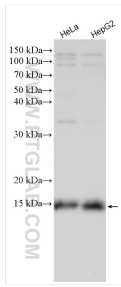
For technical support and original validation data for this product please contact:

T: 1 (888) 4PTGLAB (1-888-478-4522) (toll free in USA), or 1(312) 455-8498 (outside USA)

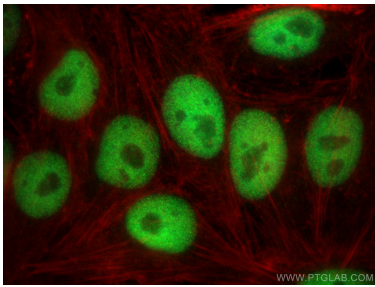
E: proteintech@ptglab.com
W: ptglab.com

This product is exclusively available under Proteintech Group brand and is not available to purchase from any other manufacturer.

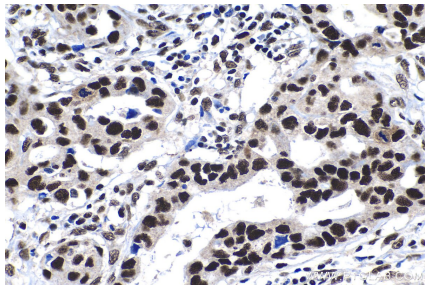
Selected Validation Data



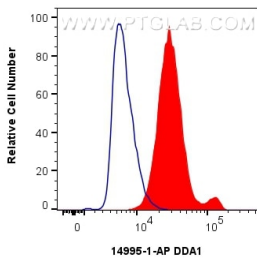
Various lysates were subjected to SDS PAGE followed by western blot with 14995-1-AP (DDA1 antibody) at dilution of 1:1000 incubated at room temperature for 1.5 hours.



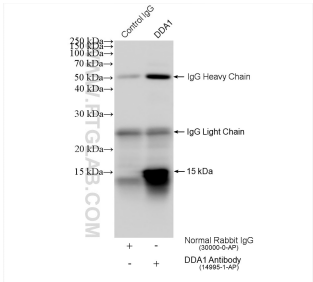
Immunofluorescent analysis of (4% PFA) fixed HepG2 cells using DDA1 antibody (14995-1-AP) at dilution of 1:600 and Multi-rAb CoraLite® Plus 488-Goat Anti-Rabbit Recombinant Secondary Antibody (H+L) (RGAR002), CL594-Phalloidin (red).



Immunohistochemical analysis of paraffin-embedded human lung cancer tissue slide using 14995-1-AP (DDA1 antibody) at dilution of 1:1000 (under 40x lens). Heat mediated antigen retrieval with Tris-EDTA buffer (pH 9.0).



1x10⁶ HepG2 cells were intracellularly stained with 0.4 ug DDA1 Polyclonal antibody (14995-1-AP) and CoraLite®488-Conjugated AffiniPure Goat Anti-Rabbit IgG(H+L) (SA00013-2)(red), or 0.4 ug Rabbit IgG control Rabbit PolyAb (30000-0-AP) (blue). Cells were fixed with 4% PFA and permeabilized with Flow Cytometry Perm Buffer (PF00011-C).



IP result of anti-DDA1 (IP:14995-1-AP, 4ug; Detection:14995-1-AP 1:500) with HepG2 cells lysate 1080 ug.