

For Research Use Only

# ENC1 Polyclonal antibody

Catalog Number: 15007-1-AP

Featured Product

2 Publications



## Basic Information

<b>Catalog Number:</b> 15007-1-AP	<b>GenBank Accession Number:</b> BC000418	<b>Purification Method:</b> Antigen affinity purification
<b>Size:</b> 150ul, Concentration: 550 µg/ml by Nanodrop and 260 µg/ml by Bradford method using BSA as the standard;	<b>GeneID (NCBI):</b> 8507	<b>Recommended Dilutions:</b> WB 1:1000-1:4000 IP 0.5-4.0 ug for IP and 1:500-1:2000 for WB
<b>Source:</b> Rabbit	<b>Full Name:</b> ectodermal-neural cortex (with BTB-like domain)	<b>IHC 1:20-1:200</b>
<b>Isotype:</b> IgG	<b>Calculated MW:</b> 66 kDa	
<b>Immunogen Catalog Number:</b> AG6607	<b>Observed MW:</b> 67 kDa, 57 kDa	

## Applications

### Tested Applications:

IHC, IP, WB, ELISA

### Cited Applications:

CoIP, IHC, WB

### Species Specificity:

human, mouse

### Cited Species:

human

**Note-IHC: suggested antigen retrieval with TE buffer pH 9.0; (\*) Alternatively, antigen retrieval may be performed with citrate buffer pH 6.0**

### Positive Controls:

**WB:** SH-SY5Y cells, Neuro-2a cells, MCF-7 cells, mouse brain tissue, human lung tissue

**IP:** mouse brain tissue,

**IHC:** human pancreas tissue,

## Background Information

### Notable Publications

Author	Pubmed ID	Journal	Application
Marianna Naki	35563580	Int J Mol Sci	CoIP
Ying Cui	33816464	Front Cell Dev Biol	WB, IHC

## Storage

### Storage:

Store at -20°C. Stable for one year after shipment.

### Storage Buffer:

PBS with 0.02% sodium azide and 50% glycerol pH 7.3.

Aliquoting is unnecessary for -20°C storage

\*\*\* 20ul sizes contain 0.1% BSA

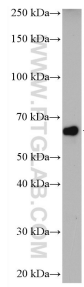
For technical support and original validation data for this product please contact:

T: 1 (888) 4PTGLAB (1-888-478-4522) (toll free in USA), or 1(312) 455-8498 (outside USA)

E: [proteintech@ptglab.com](mailto:proteintech@ptglab.com)  
W: [ptglab.com](http://ptglab.com)

This product is exclusively available under Proteintech Group brand and is not available to purchase from any other manufacturer.

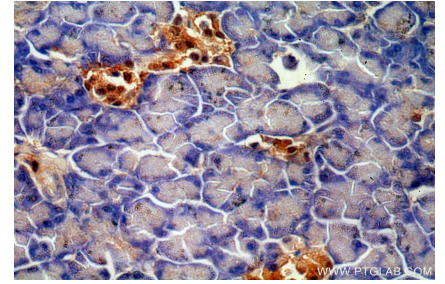
## Selected Validation Data



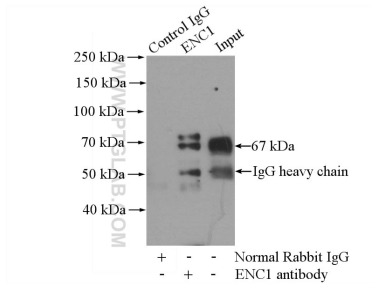
SH-SY5Y cells were subjected to SDS PAGE followed by western blot with 15007-1-AP (ENC1 antibody) at dilution of 1:2000 incubated at room temperature for 1.5 hours.



Immunohistochemical analysis of paraffin-embedded human pancreas using 15007-1-AP (ENC1 antibody) at dilution of 1:50 (under 10x lens).



Immunohistochemical analysis of paraffin-embedded human pancreas using 15007-1-AP (ENC1 antibody) at dilution of 1:50 (under 40x lens).



IP Result of anti-ENC1 (IP:15007-1-AP, 4ug; Detection:15007-1-AP 1:1000) with mouse brain tissue lysate 2640ug.