

For Research Use Only

SKP2 Polyclonal antibody

Catalog Number: 15010-1-AP

Featured Product

57 Publications



Basic Information

Catalog Number:

15010-1-AP

Size:

150ul, Concentration: 600 ug/ml by Nanodrop;

Source:

Rabbit

Isotype:

IgG

Immunogen Catalog Number:

AG6826

GenBank Accession Number:

BC001441

GeneID (NCBI):

6502

UNIPROT ID:

Q13309

Full Name:

S-phase kinase-associated protein 2 (p45)

Calculated MW:

48 kDa

Observed MW:

46-48 kDa

Purification Method:

Antigen affinity purification

Recommended Dilutions:

WB: 1:1000-1:5000

IP: 0.5-4.0 ug for 1.0-3.0 mg of total protein lysate

IHC: 1:50-1:500

IF/ICC: 1:200-1:800

Applications

Tested Applications:

WB, IHC, IF/ICC, IP, ELISA

Cited Applications:

WB, IHC, IF, IP, CoIP

Species Specificity:

human

Cited Species:

human, mouse, rat

Positive Controls:

WB: HEK-293 cells, Jurkat cells

IP: HEK-293 cells,

IHC: human lung cancer tissue, human breast cancer tissue

IF/ICC: HepG2 cells,

Note-IHC: suggested antigen retrieval with TE buffer pH 9.0; (*) Alternatively, antigen retrieval may be performed with citrate buffer pH 6.0

Background Information

SKP2(S-phase kinase-associated protein 2) is also named as FBXL1 and belongs to the F-box family. It regulates cellular proliferation by targeting several cell cycle-regulated proteins for ubiquitination and degradation, including cyclin-dependent kinase inhibitor CDKN1B(PMID:22200179). The acetylation of SKP2 in the nuclear localization signal (NLS) can promote its cytoplasmic retention, and cytoplasmic SKP2 enhances cellular migration through ubiquitination and destruction of CDH. This protein has 3 isoforms produced by alternative splicing (PMID:26497688, PMID:16902410).

Notable Publications

Author	Pubmed ID	Journal	Application
Yong-Li Zhang	34679694	Antioxidants (Basel)	WB
Xiaohong Xia	34599966	J Biol Chem	IF
Dian Bao	34803506	Int J Biol Sci	WB,IF

Storage

Storage:

Store at -20°C. Stable for one year after shipment.

Storage Buffer:

PBS with 0.02% sodium azide and 50% glycerol, pH7.3

Aliquoting is unnecessary for -20°C storage

*** 20ul sizes contain 0.1% BSA

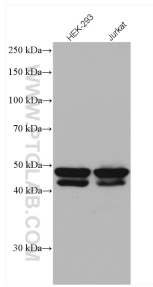
For technical support and original validation data for this product please contact:

T: 1 (888) 4PTGLAB (1-888-478-4522) (toll free in USA), or 1(312) 455-8498 (outside USA)

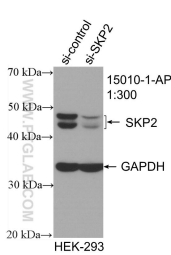
E: proteintech@ptglab.com
W: ptglab.com

This product is exclusively available under Proteintech Group brand and is not available to purchase from any other manufacturer.

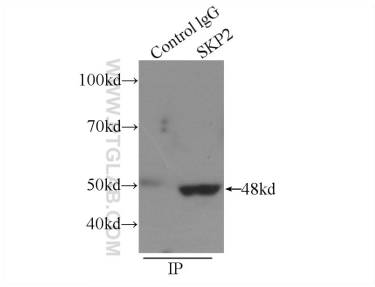
Selected Validation Data



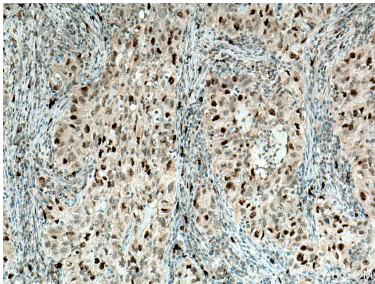
Various lysates were subjected to SDS PAGE followed by western blot with 15010-1-AP (SKP2 antibody) at dilution of 1:2500 incubated at room temperature for 1.5 hours.



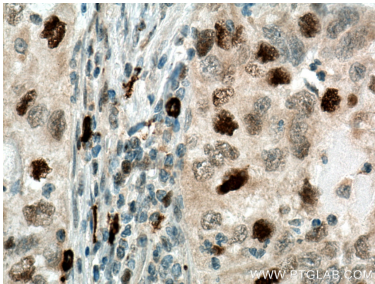
WB result of SKP2 antibody (15010-1-AP; 1:300; incubated at room temperature for 1.5 hours) with sh-Control and sh-SKP2 transfected HEK-293 cells.



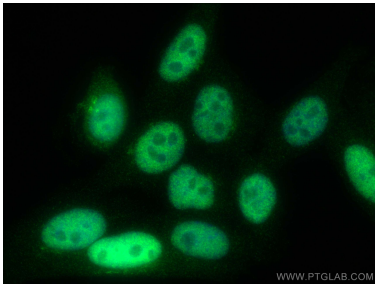
IP result of anti-SKP2 (IP:15010-1-AP, 4ug; Detection:15010-1-AP 1:300) with HEK-293 cells lysate 2440ug.



Immunohistochemical analysis of paraffin-embedded human lung cancer tissue slide using 15010-1-AP (SKP2 antibody) at dilution of 1:200 (under 10x lens). Heat mediated antigen retrieval with Tris-EDTA buffer (pH 9.0).



Immunohistochemical analysis of paraffin-embedded human lung cancer tissue slide using 15010-1-AP (SKP2 antibody) at dilution of 1:200 (under 40x lens). Heat mediated antigen retrieval with Tris-EDTA buffer (pH 9.0).



Immunofluorescent analysis of (4% PFA) fixed HepG2 cells using SKP2 antibody (15010-1-AP) at dilution of 1:400 and CoraLite®488-Conjugated Goat Anti-Rabbit IgG(H+L).