

For Research Use Only

# Lysozyme Polyclonal antibody

Catalog Number: 15013-1-AP

18 Publications



## Basic Information

### Catalog Number:

15013-1-AP

### Size:

150ul, Concentration: 400 ug/ml by Nanodrop;

### Source:

Rabbit

### Isotype:

IgG

### Immunogen Catalog Number:

AG6917

### GenBank Accession Number:

BC004147

### GeneID (NCBI):

4069

### UNIPROT ID:

P61626

### Full Name:

lysozyme (renal amyloidosis)

### Calculated MW:

17 kDa

### Observed MW:

15-17 kDa

### Purification Method:

Antigen affinity purification

### Recommended Dilutions:

WB 1:500-1:1000

IHC 1:200-1:800

## Applications

### Tested Applications:

WB, IHC, ELISA

### Cited Applications:

WB, IHC, IF

### Species Specificity:

human, mouse, rat

### Cited Species:

human, mouse, rat

**Note-IHC: suggested antigen retrieval with TE buffer pH 9.0; (\*) Alternatively, antigen retrieval may be performed with citrate buffer pH 6.0**

### Positive Controls:

WB : THP-1 cells, mouse lung tissue, human spleen tissue, HL-60 cells

IHC : mouse heart tissue, human stomach cancer tissue

## Background Information

LYZ (Lysozyme C) is also named as LZM and belongs to the glycosyl hydrolase 22 family. It catalyzes the hydrolysis of the bacterial cell wall beta(1-4) glycosidic linkages between N-acetylmuramic acid and N-acetylglucosamine. In tissues and body fluids this protein is associated with the monocyte-macrophage system and enhance the activity of immunoagents. LYZ is capable of both hydrolysis and transglycosylation; it shows also a slight esterase activity. Defects in LYZ are a cause of amyloidosis type 8 (AMYL8). The full length protein has a signal peptide with 18 amino acid.

## Notable Publications

| Author             | Pubmed ID | Journal          | Application |
|--------------------|-----------|------------------|-------------|
| Brittany R Jenkins | 34042222  | FASEB J          | WB          |
| Chunjun Li         | 35510340  | J Food Biochem   | WB          |
| Yuwei Yang         | 30902745  | J Ethnopharmacol | WB          |

## Storage

### Storage:

Store at -20°C. Stable for one year after shipment.

### Storage Buffer:

PBS with 0.02% sodium azide and 50% glycerol, pH7.3

Aliquoting is unnecessary for -20°C storage

\*\*\* 20ul sizes contain 0.1% BSA

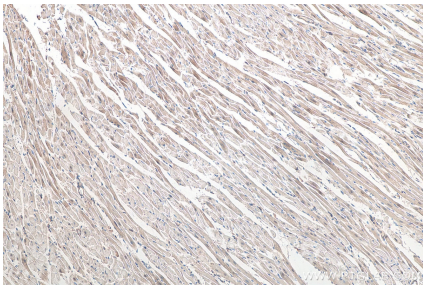
For technical support and original validation data for this product please contact:

T: 1 (888) 4PTGLAB (1-888-478-4522) (toll free in USA), or 1(312) 455-8498 (outside USA)

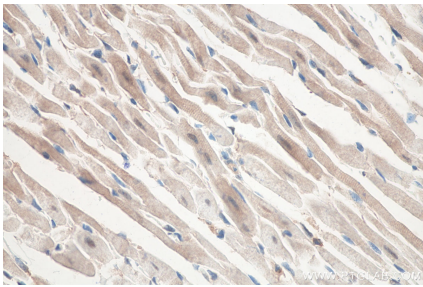
E: [proteintech@ptglab.com](mailto:proteintech@ptglab.com)  
W: [ptglab.com](http://ptglab.com)

This product is exclusively available under Proteintech Group brand and is not available to purchase from any other manufacturer.

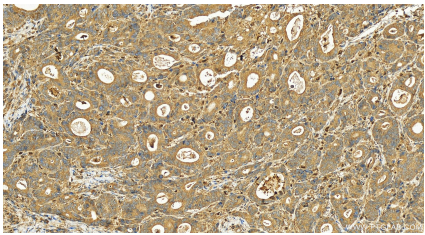
Selected Validation Data



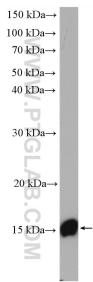
Immunohistochemical analysis of paraffin-embedded mouse heart tissue slide using 15013-1-AP (Lysozyme antibody) at dilution of 1:400 (under 10x lens). Heat mediated antigen retrieval with Tris-EDTA buffer (pH 9.0).



Immunohistochemical analysis of paraffin-embedded mouse heart tissue slide using 15013-1-AP (Lysozyme antibody) at dilution of 1:400 (under 40x lens). Heat mediated antigen retrieval with Tris-EDTA buffer (pH 9.0).



Immunohistochemical analysis of paraffin-embedded human stomach cancer tissue slide using 15013-1-AP (Lysozyme antibody) at dilution of 1:100 (under 20x lens). Heat mediated antigen retrieval with Tris-EDTA buffer (pH 9.0).



THP-1 cells were subjected to SDS PAGE followed by western blot with 15013-1-AP (Lysozyme antibody) at dilution of 1:600 incubated at room temperature for 1.5 hours.