

For Research Use Only

MRPL14 Polyclonal antibody

Catalog Number: 15040-1-AP

3 Publications



Basic Information

Catalog Number:

15040-1-AP

Size:

150ul , Concentration: 240 ug/ml by Nanodrop and 240 ug/ml by Bradford method using BSA as the standard;

Source:

Rabbit

Isotype:

IgG

Immunogen Catalog Number:

AG6808

GenBank Accession Number:

BC065005

GeneID (NCBI):

64928

UNIPROT ID:

Q6P1L8

Full Name:

mitochondrial ribosomal protein L14

Calculated MW:

16 kDa

Observed MW:

16 kDa

Purification Method:

Antigen affinity purification

Recommended Dilutions:

WB: 1:200-1:1000

Applications

Tested Applications:

WB, ELISA

Cited Applications:

WB

Species Specificity:

human, mouse, rat

Cited Species:

human

Positive Controls:

WB : HEK-293 cells,

Notable Publications

Author	Pubmed ID	Journal	Application
Alexandre Janer	27390132	EMBO Mol Med	WB
Adilai Abodulikemu	40068065	Medicine (Baltimore)	WB
Elena Lavdovskaia	38992089	Nat Struct Mol Biol	WB

Storage

Storage:

Store at -20°C. Stable for one year after shipment.

Storage Buffer:

PBS with 0.02% sodium azide and 50% glycerol, pH7.3

Aliquoting is unnecessary for -20°C storage

*** 20ul sizes contain 0.1% BSA

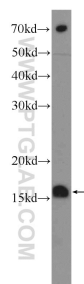
For technical support and original validation data for this product please contact:

T: 1 (888) 4PTGLAB (1-888-478-4522) (toll free in USA), or 1(312) 455-8498 (outside USA)

E: proteintech@ptglab.com
W: ptglab.com

This product is exclusively available under Proteintech Group brand and is not available to purchase from any other manufacturer.

Selected Validation Data



HEK-293 cells were subjected to SDS PAGE followed by western blot with 15040-1-AP (MRPL14 Antibody) at dilution of 1:300 incubated at 4 degree celsius over night.