

For Research Use Only

GPM6A Polyclonal antibody

Catalog Number: 15044-1-AP

1 Publications



Basic Information

Catalog Number:

15044-1-AP

Size:

150ul , Concentration: 300 ug/ml by Nanodrop and 173 ug/ml by Bradford method using BSA as the standard;

Source:

Rabbit

Isotype:

IgG

Immunogen Catalog Number:

AG6915

GenBank Accession Number:

BC022528

GeneID (NCBI):

2823

UNIPROT ID:

P51674

Full Name:

glycoprotein M6A

Calculated MW:

31 kDa

Observed MW:

31 kDa

Purification Method:

Antigen affinity purification

Recommended Dilutions:

WB 1:2000-1:16000

IP 0.5-4.0 ug for 1.0-3.0 mg of total protein lysate

IHC 1:50-1:500

Applications

Tested Applications:

WB, IP, IHC, ELISA

Cited Applications:

WB, IF

Species Specificity:

human, mouse, rat

Cited Species:

human

Note-IHC: suggested antigen retrieval with TE buffer pH 9.0; (*) Alternatively, antigen retrieval may be performed with citrate buffer pH 6.0

Positive Controls:

WB : mouse brain tissue, rat brain tissue

IP : mouse brain tissue,

IHC : mouse brain tissue,

Background Information

Glycoprotein M6A (GPM6A, or M6A) is known as a multi-pass transmembrane protein and an abundant cell surface protein on neurons in the central nervous system (CNS). M6A belongs to the myelin proteolipid protein family and is involved in neuronal differentiation, including differentiation and migration of neuronal stem cell. M6A is identified as a retinal membrane protein that is strongly expressed at embryonic stages. In mouse adult retina, M6A plays a role in neuronal plasticity and is involved in neurite and filopodia outgrowth, filopodia motility and probably synapse formation via regulation of MAPK and Src signaling pathways.

Notable Publications

Author	Pubmed ID	Journal	Application
Zong-Rui Li	35918602	Lab Invest	WB,IF

Storage

Storage:

Store at -20°C. Stable for one year after shipment.

Storage Buffer:

PBS with 0.02% sodium azide and 50% glycerol pH 7.3.

Aliquoting is unnecessary for -20°C storage

*** 20ul sizes contain 0.1% BSA

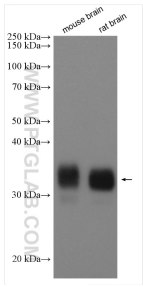
For technical support and original validation data for this product please contact:

T: 1 (888) 4PTGLAB (1-888-478-4522) (toll free in USA), or 1(312) 455-8498 (outside USA)

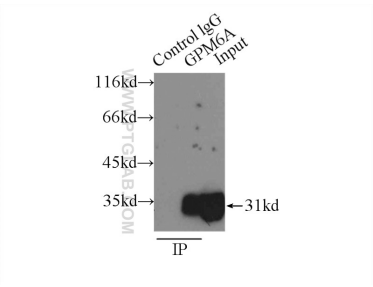
E: proteintech@ptglab.com
W: ptglab.com

This product is exclusively available under Proteintech Group brand and is not available to purchase from any other manufacturer.

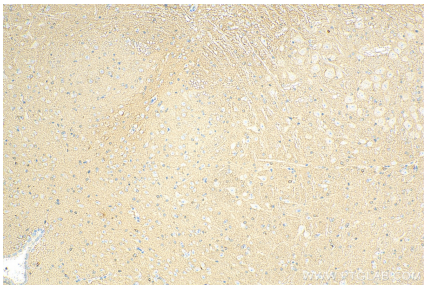
Selected Validation Data



Various lysates were subjected to SDS PAGE followed by western blot with 15044-1-AP (GPM6A antibody) at dilution of 1:8000 incubated at room temperature for 1.5 hours.



IP result of anti-GPM6A (IP:15044-1-AP, 3ug; Detection:15044-1-AP 1:800) with mouse brain tissue lysate 6500ug.



Immunohistochemical analysis of paraffin-embedded mouse brain tissue slide using 15044-1-AP (GPM6A antibody) at dilution of 1:200 (under 10x lens). Heat mediated antigen retrieval with Tris-EDTA buffer (pH 9.0).