

For Research Use Only

GMPPB Polyclonal antibody

Catalog Number: 15094-1-AP

Featured Product

7 Publications



Basic Information

Catalog Number:

15094-1-AP

Size:

150ul, Concentration: 600 ug/ml by Nanodrop and 493 ug/ml by Bradford method using BSA as the standard;

Source:

Rabbit

Isotype:

IgG

Immunogen Catalog Number:

AG7168

GenBank Accession Number:

BC001141

GeneID (NCBI):

29925

UNIPROT ID:

Q9Y5P6

Full Name:

GDP-mannose pyrophosphorylase B

Calculated MW:

40 kDa

Observed MW:

40-43 kDa

Purification Method:

Antigen affinity purification

Recommended Dilutions:

WB 1:500-1:2000

IHC 1:50-1:500

IF/ICC 1:50-1:500

Applications

Tested Applications:

WB, IHC, IF/ICC, ELISA

Cited Applications:

WB, IHC, IF

Species Specificity:

human, mouse, rat

Cited Species:

human, mouse, zebrafish

Note-IHC: suggested antigen retrieval with TE buffer pH 9.0; (*) Alternatively, antigen retrieval may be performed with citrate buffer pH 6.0

Positive Controls:

WB : mouse skeletal muscle tissue, mouse brain tissue, rat skeletal muscle tissue

IHC : human ovary cancer tissue,

IF/ICC : HEK-293 cells,

Background Information

GMPPB is a cytoplasmic enzyme that catalyzes the formation of GDP-mannose, a key substrate for several glycosylation pathways, including O-mannosylation of α -DG. GMPPB facilitates the formation of the sugar donor GDP-mannose and pyrophosphate from mannose-1-phosphate and GTP, a very early step in the glycosylation pathway (PMID: 37834154, 27147698). GMPPB mutations correlate with several congenital diseases, including severe congenital muscular dystrophy (CMD) with abnormalities in the brain and eye (PMID: 26310427, 30684953). Western blot analysis detected GMPPB at an apparent molecular mass of 40 kDa.

Notable Publications

Author	Pubmed ID	Journal	Application
Patricia Franzka	36313076	Front Nutr	WB
Norio Sasaoka	30529953	iScience	WB
Patricia Franzka	34124155	Front Mol Biosci	WB

Storage

Storage:

Store at -20°C. Stable for one year after shipment.

Storage Buffer:

PBS with 0.02% sodium azide and 50% glycerol pH 7.3.

Aliquoting is unnecessary for -20°C storage

*** 20ul sizes contain 0.1% BSA

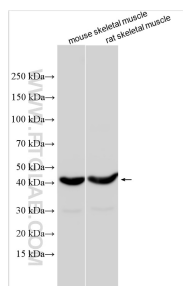
For technical support and original validation data for this product please contact:

T: 1 (888) 4PTGLAB (1-888-478-4522) (toll free in USA), or 1(312) 455-8498 (outside USA)

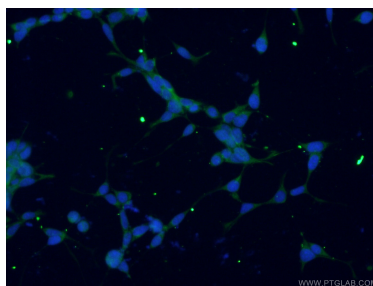
E: proteintech@ptglab.com
W: ptglab.com

This product is exclusively available under Proteintech Group brand and is not available to purchase from any other manufacturer.

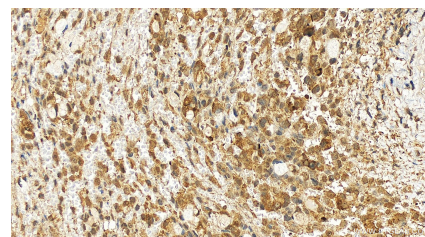
Selected Validation Data



Various lysates were subjected to SDS PAGE followed by western blot with 15094-1-AP (GMPPB antibody) at dilution of 1:1000 incubated at room temperature for 1.5 hours.



Immunofluorescent analysis of (-20°C Ethanol) fixed HEK-293 cells using 15094-1-AP (GMPPB antibody) at dilution of 1:50 and Alexa Fluor 488-Conjugated AffiniPure Goat Anti-Rabbit IgG(H+L).



Immunohistochemical analysis of paraffin-embedded human ovary cancer tissue slide using 15094-1-AP (GMPPB antibody) at dilution of 1:100 (under 20x lens). Heat mediated antigen retrieval with Tris-EDTA buffer (pH 9.0).