

For Research Use Only

HCCS Polyclonal antibody

Catalog Number: 15118-1-AP

6 Publications



Basic Information

Catalog Number:

15118-1-AP

Size:

150ul, Concentration: 450 ug/ml by Nanodrop and 693 ug/ml by Bradford method using BSA as the standard;

Source:

Rabbit

Isotype:

IgG

Immunogen Catalog Number:

AG7189

GenBank Accession Number:

BC001691

GeneID (NCBI):

3052

UNIPROT ID:

P53701

Full Name:

holocytochrome c synthase (cytochrome c heme-lyase)

Calculated MW:

31 kDa

Observed MW:

31 kDa

Purification Method:

Antigen affinity purification

Recommended Dilutions:

WB 1:500-1:2400

IP 0.5-4.0 ug for 1.0-3.0 mg of total protein lysate

IHC 1:100-1:400

IF/ICC 1:50-1:500

Applications

Tested Applications:

WB, IHC, IF/ICC, IP, ELISA

Cited Applications:

WB

Species Specificity:

human, mouse

Cited Species:

human, mouse

Note-IHC: suggested antigen retrieval with TE buffer pH 9.0; (*) Alternatively, antigen retrieval may be performed with citrate buffer pH 6.0

Positive Controls:

WB : human heart tissue, HeLa cells, MCF-7 cells

IP : MCF-7 cells,

IHC : human breast cancer tissue,

IF/ICC : HeLa cells,

Background Information

HCCS(Cytochrome c-type heme lyase) links covalently the heme group to the apoprotein of cytochrome C. The covalent attachment of heme by CCHL in the IMS is crucial for translocation of the precursor of cytochrome c and its trapping in the IMS(PMID:15359280). This protein has a calculated molecular mass of about 31 KDa.

Notable Publications

Author	Pubmed ID	Journal	Application
Bin Feng	32999148	Chem Pharm Bull (Tokyo)	WB
Alexandre Janer	27390132	EMBO Mol Med	WB
Yushi Otsuka	39821719	FEBS Open Bio	WB

Storage

Storage:

Store at -20°C. Stable for one year after shipment.

Storage Buffer:

PBS with 0.02% sodium azide and 50% glycerol, pH7.3

Aliquoting is unnecessary for -20°C storage

*** 20ul sizes contain 0.1% BSA

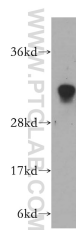
For technical support and original validation data for this product please contact:

T: 1 (888) 4PTGLAB (1-888-478-4522) (toll free in USA), or 1(312) 455-8498 (outside USA)

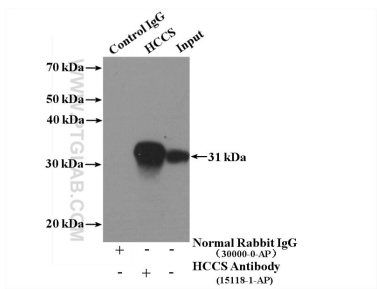
E: proteintech@ptglab.com
W: ptglab.com

This product is exclusively available under Proteintech Group brand and is not available to purchase from any other manufacturer.

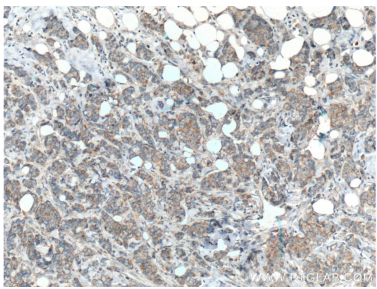
Selected Validation Data



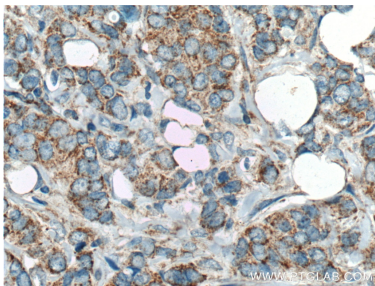
human heart tissue were subjected to SDS PAGE followed by western blot with 15118-1-AP (HCCS antibody) at dilution of 1:500 incubated at room temperature for 1.5 hours.



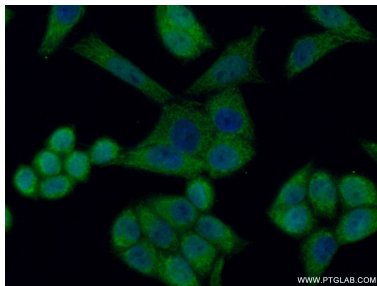
IP result of anti-HCCS (IP:15118-1-AP, 4ug; Detection:15118-1-AP 1:500) with MCF-7 cells lysate 3200ug.



Immunohistochemical analysis of paraffin-embedded human breast cancer tissue slide using 15118-1-AP (HCCS Antibody) at dilution of 1:200 (under 10x lens). Heat mediated antigen retrieval with Tris-EDTA buffer (pH 9.0).



Immunohistochemical analysis of paraffin-embedded human breast cancer tissue slide using 15118-1-AP (HCCS Antibody) at dilution of 1:200 (under 40x lens). Heat mediated antigen retrieval with Tris-EDTA buffer (pH 9.0).



Immunofluorescent analysis of (4% PFA) fixed HeLa cells using 15118-1-AP (HCCS antibody) at dilution of 1:50 and Alexa Fluor 488-conjugated Goat Anti-Rabbit IgG(H+L).