

For Research Use Only

# ABLIM1 Polyclonal antibody

Catalog Number: 15129-1-AP

Featured Product

6 Publications



## Basic Information

### Catalog Number:

15129-1-AP

### Size:

150ul, Concentration: 600 ug/ml by Nanodrop and 440 ug/ml by Bradford method using BSA as the standard;

### Source:

Rabbit

### Isotype:

IgG

### Immunogen Catalog Number:

AG7258

### GenBank Accession Number:

BC002448

### GeneID (NCBI):

3983

### UNIPROT ID:

O14639

### Full Name:

actin binding LIM protein 1

### Calculated MW:

88 kDa

### Observed MW:

48-52 kDa, 105-110 kDa

### Purification Method:

Antigen affinity purification

### Recommended Dilutions:

WB 1:1000-1:4000

IHC 1:20-1:200

IF-P 1:50-1:500

IF/ICC 1:50-1:500

## Applications

### Tested Applications:

WB, IHC, IF/ICC, IF-P, ELISA

### Cited Applications:

WB, IF

### Species Specificity:

human, mouse, rat

### Cited Species:

human, mouse

**Note-IHC: suggested antigen retrieval with TE buffer pH 9.0; (\*) Alternatively, antigen retrieval may be performed with citrate buffer pH 6.0**

### Positive Controls:

WB : HeLa cells, HEK-293 cells, NCI-H1299 cells

IHC : human liver tissue,

IF-P : mouse skeletal muscle tissue,

IF/ICC : HEK-293 cells,

## Background Information

ABLIM1 (actin-binding LIM protein 1) is a member of the LIM-domain protein family, mediating interactions between actin filaments and cytoplasmic targets. ABLIM1 has been reported as a cell cortex protein specifically in non-erythrocytes, and is critical for the formation of dense interwoven cortical actin meshwork. Due to the alternative splicing, ABLIM1 has multiple isoforms with predicted masses of 52, 70, and 88 kDa, respectively (PMID: 9245787). The phosphorylation or binding with SUMO2 may result in higher MW.

## Notable Publications

Author	Pubmed ID	Journal	Application
Xin Dong	33061800	Int J Biol Sci	WB
Haruna Narahara	29904924	J Cell Physiol	WB
Cao Jingli J	22684256	Nat Cell Biol	WB

## Storage

### Storage:

Store at -20°C. Stable for one year after shipment.

### Storage Buffer:

PBS with 0.02% sodium azide and 50% glycerol

Aliquoting is unnecessary for -20°C storage

\*\*\* 20ul sizes contain 0.1% BSA

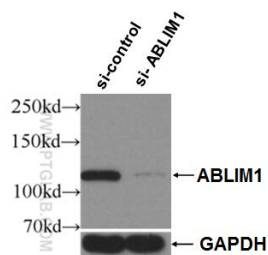
For technical support and original validation data for this product please contact:

T: 1 (888) 4PTGLAB (1-888-478-4522) (toll free in USA), or 1(312) 455-8498 (outside USA)

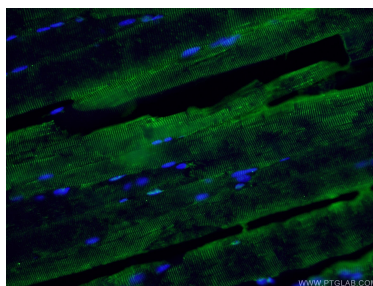
E: [proteintech@ptglab.com](mailto:proteintech@ptglab.com)  
W: [ptglab.com](http://ptglab.com)

This product is exclusively available under Proteintech Group brand and is not available to purchase from any other manufacturer.

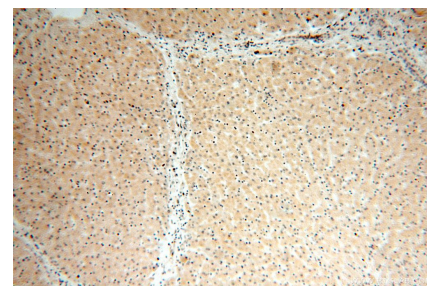
## Selected Validation Data



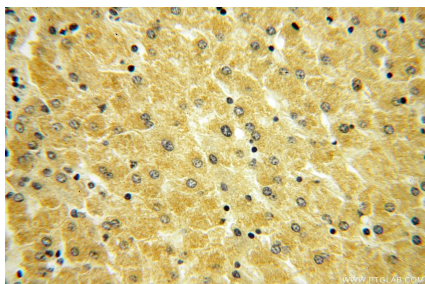
WB result of ABLIM1 antibody (15129-1-AP; 1:2000; incubated at room temperature for 1.5 hours) with sh-Control and sh-ABLIM1 transfected HeLa cells.



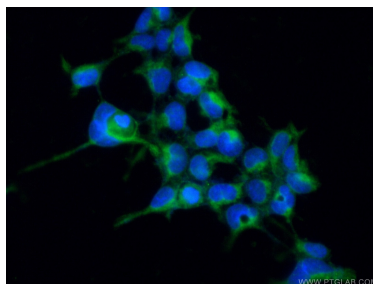
Immunofluorescent analysis of (4% PFA) fixed mouse skeletal muscle tissue using 15129-1-AP (ABLIM1 antibody) at dilution of 1:50 and Alexa Fluor 488-conjugated AffiniPure Goat Anti-Rabbit IgG(H+L).



Immunohistochemical analysis of paraffin-embedded human liver using 15129-1-AP (ABLIM1 antibody) at dilution of 1:100 (under 10x lens).



Immunohistochemical analysis of paraffin-embedded human liver using 15129-1-AP (ABLIM1 antibody) at dilution of 1:100 (under 40x lens).



Immunofluorescent analysis of (-20°C Ethanol) fixed HEK-293 cells using 15129-1-AP (ABLIM1 antibody) at dilution of 1:50 and Alexa Fluor 488-conjugated AffiniPure Goat Anti-Rabbit IgG(H+L).