

For Research Use Only

# ATG4B Polyclonal antibody

Catalog Number: 15131-1-AP

Featured Product

27 Publications



## Basic Information

### Catalog Number:

15131-1-AP

### Size:

150ul, Concentration: 540 ug/ml by Nanodrop;

### Source:

Rabbit

### Isotype:

IgG

### Immunogen Catalog Number:

AG7261

### GenBank Accession Number:

BC000719

### GeneID (NCBI):

23192

### UNIPROT ID:

Q9Y4P1

### Full Name:

ATG4 autophagy related 4 homolog B (S. cerevisiae)

### Calculated MW:

44 kDa

### Observed MW:

44 kDa

### Purification Method:

Antigen affinity purification

### Recommended Dilutions:

WB 1:500-1:3000

IP 0.5-4.0 ug for 1.0-3.0 mg of total protein lysate

IHC 1:50-1:500

## Applications

### Tested Applications:

WB, IHC, IP, ELISA

### Cited Applications:

WB, IHC, IF, IP, CoIP

### Species Specificity:

human, mouse, rat

### Cited Species:

human, mouse, rat

### Positive Controls:

**WB** : HEK-293 cells, HuH-7 cells, HepG2 cells, Jurkat cells, HeLa cells

**IP** : HeLa cells,

**IHC** : human pancreas cancer tissue, mouse heart tissue

**Note-IHC: suggested antigen retrieval with TE buffer pH 9.0; (\*) Alternatively, antigen retrieval may be performed with citrate buffer pH 6.0**

## Background Information

ATG4B (autophagy 4) is also named as APG4B, AUL1, KIAA0943 and belongs to the peptidase C54 family. It is a homolog of yeast Apg4, a cysteine protease involved in autophagy and is a cytoplasmic enzyme. This protein is highly expressed in skeletal muscle, with lower expression in heart, liver, and pancreas and no expression is detected in fetal tissues by the northern blot. ATG4B is widely expressed in tumor cell lines (PMID:12446702). It has some isoforms produced by alternative splicing with molecular mass of 31-52 kDa.

## Notable Publications

Author	Pubmed ID	Journal	Application
Huandi Liu	36163615	J Med Virol	WB
Luis Muniz-Feliciano	28933590	Autophagy	WB
Nan Zhang	28889000	Cancer Lett	WB

## Storage

### Storage:

Store at -20°C. Stable for one year after shipment.

### Storage Buffer:

PBS with 0.02% sodium azide and 50% glycerol pH 7.3.

Aliquoting is unnecessary for -20°C storage

\*\*\* 20ul sizes contain 0.1% BSA

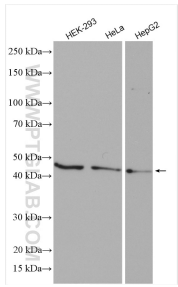
For technical support and original validation data for this product please contact:

T: 1 (888) 4PTGLAB (1-888-478-4522) (toll free in USA), or 1(312) 455-8498 (outside USA)

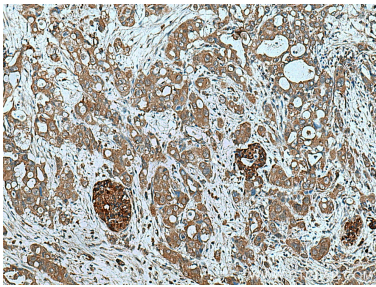
E: proteintech@ptglab.com  
W: ptglab.com

This product is exclusively available under Proteintech Group brand and is not available to purchase from any other manufacturer.

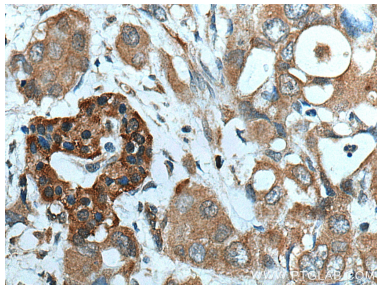
Selected Validation Data



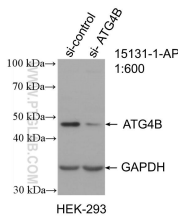
Various lysates were subjected to SDS PAGE followed by western blot with 15131-1-AP (ATG4B antibody) at dilution of 1:1500 incubated at room temperature for 1.5 hours.



Immunohistochemical analysis of paraffin-embedded human pancreas cancer tissue slide using 15131-1-AP (ATG4B antibody) at dilution of 1:200 (under 10x lens). Heat mediated antigen retrieval with Tris-EDTA buffer (pH 9.0).

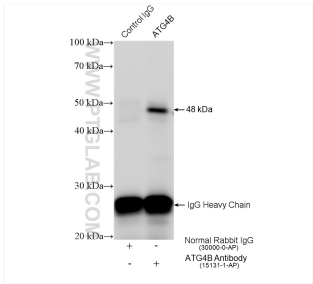


Immunohistochemical analysis of paraffin-embedded human pancreas cancer tissue slide using 15131-1-AP (ATG4B antibody) at dilution of 1:200 (under 40x lens). Heat mediated antigen retrieval with Tris-EDTA buffer (pH 9.0).



WB result of ATG4B antibody (15131-1-AP; 1:600; incubated at room temperature for 1.5 hours) with sh-Control and sh-ATG4B transfected HEK-293 cells.

WB result of ATG4B antibody (15131-1-AP; 1:1000; room temperature for 1.5 hours) with wild-type and ATG4B knockout HuH-7 cells.



IP result of anti-ATG4B (IP:15131-1-AP, 4ug; Detection:15131-1-AP 1:800) with HeLa cells lysate 1560 ug.