

For Research Use Only

GTF2F2 Polyclonal antibody

Catalog Number: 15139-1-AP



Basic Information

Catalog Number: 15139-1-AP	GenBank Accession Number: BC001771	Purification Method: Antigen affinity purification
Size: 150ul , Concentration: 800 µg/ml by Nanodrop and 393 µg/ml by Bradford method using BSA as the standard;	GeneID (NCBI): 2963	Recommended Dilutions: WB 1:500-1:3000 IF 1:50-1:500
Source: Rabbit	Full Name: general transcription factor IIF, polypeptide 2, 30kDa	
Isotype: IgG	Calculated MW: 28 kDa	
Immunogen Catalog Number: AG7313	Observed MW: 30 kDa	

Applications

Tested Applications: IF, WB, ELISA	Positive Controls:
Species Specificity: human, mouse, rat	WB : K-562 cells, HeLa cells, mouse spleen tissue, PC-3 cells, rat spleen tissue
	IF : HeLa cells,

Background Information

Storage

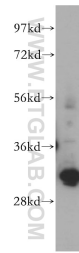
Storage:
Store at -20°C. Stable for one year after shipment.
Storage Buffer:
PBS with 0.02% sodium azide and 50% glycerol pH 7.3.
Aliquoting is unnecessary for -20°C storage

*** 20ul sizes contain 0.1% BSA

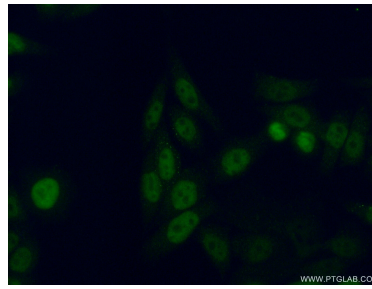
For technical support and original validation data for this product please contact:
T: 1 (888) 4PTGLAB (1-888-478-4522) (toll free in USA), or 1(312) 455-8498 (outside USA)
E: proteintech@ptglab.com
W: ptglab.com

This product is exclusively available under Proteintech Group brand and is not available to purchase from any other manufacturer.

Selected Validation Data



K-562 cells were subjected to SDS PAGE followed by western blot with 15139-1-AP (GTF2F2 antibody) at dilution of 1:500 incubated at room temperature for 1.5 hours.



Immunofluorescent analysis of (4% PFA) fixed HeLa cells using 15139-1-AP (GTF2F2 antibody) at dilution of 1:50 and Alexa Fluor 488-conjugated AffiniPure Goat Anti-Rabbit IgG(H+L).