

For Research Use Only

# Gamma Tubulin Polyclonal antibody

Catalog Number: 15176-1-AP

Featured Product

23 Publications



## Basic Information

### Catalog Number:

15176-1-AP

### Size:

150ul, Concentration: 700 ug/ml by Nanodrop;

### Source:

Rabbit

### Isotype:

IgG

### Immunogen Catalog Number:

AG7070

### GenBank Accession Number:

BC000619

### GeneID (NCBI):

7283

### UNIPROT ID:

P23258

### Full Name:

tubulin, gamma 1

### Calculated MW:

51 kDa

### Observed MW:

50-55 kDa

### Purification Method:

Antigen affinity purification

### Recommended Dilutions:

WB: 1:500-1:1000

IP: 0.5-4.0 ug for 1.0-3.0 mg of total protein lysate

IHC: 1:50-1:500

FC (Intra): 0.40 ug per 10<sup>6</sup> cells in a 100 µl suspension

## Applications

### Tested Applications:

WB, IHC, FC (Intra), IP, ELISA

### Cited Applications:

WB, IHC, IF

### Species Specificity:

human, mouse, rat, canine

### Cited Species:

human, mouse

**Note-IHC: suggested antigen retrieval with TE buffer pH 9.0; (\*) Alternatively, antigen retrieval may be performed with citrate buffer pH 6.0**

### Positive Controls:

WB : HeLa cells, Transfected HEK-293 cells

IP : HeLa cells,

IHC : human prostate cancer tissue, human prostate hyperplasia tissue

FC (Intra) : HeLa cells,

## Background Information

Gamma tubulin is a member of tubulin superfamily and is a key component required for microtubule nucleation and stabilization. It is concentrated at the pericentriolar material of centrosomes in interphase cells, predominantly on spindle poles in mitotic cells, while found in midbodies during cytokinesis. Overexpression of gamma tubulin has been found in various cancers including breast cancer and gliomas. This antibody can well label the centrosome structure.

## Notable Publications

Author	Pubmed ID	Journal	Application
Lauren G. Mascibroda	36229431	Nat Commun	IF, WB
Suchismita Panda	30296263	PLoS Biol	IF
Ramona Jühlen	33168876	Sci Rep	IF

## Storage

### Storage:

Store at -20°C. Stable for one year after shipment.

### Storage Buffer:

PBS with 0.02% sodium azide and 50% glycerol, pH7.3

Aliquoting is unnecessary for -20°C storage

\*\*\* 20ul sizes contain 0.1% BSA

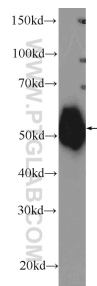
For technical support and original validation data for this product please contact:

T: 1 (888) 4PTGLAB (1-888-478-4522) (toll free in USA), or 1(312) 455-8498 (outside USA)

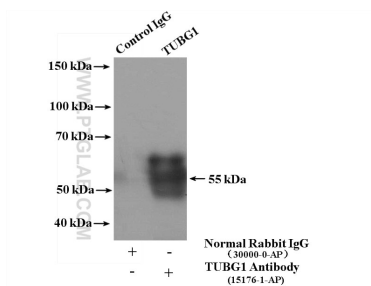
E: [proteintech@ptglab.com](mailto:proteintech@ptglab.com)  
W: [ptglab.com](http://ptglab.com)

This product is exclusively available under Proteintech Group brand and is not available to purchase from any other manufacturer.

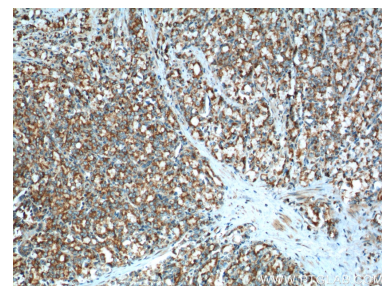
## Selected Validation Data



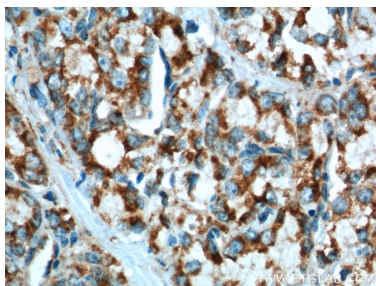
HeLa cells were subjected to SDS PAGE followed by western blot with 15176-1-AP (gamma Tubulin antibody at dilution of 1:600 incubated at room temperature for 1.5 hours.



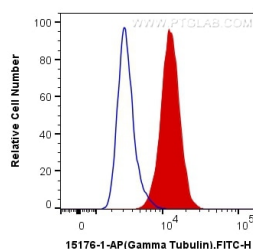
IP result of anti-Gamma Tubulin (IP:15176-1-AP, 4ug; Detection:15176-1-AP 1:2000) with HeLa cells lysate 1600ug.



Immunohistochemical analysis of paraffin-embedded human prostate cancer tissue slide using 15176-1-AP (gamma Tubulin antibody at dilution of 1:200 (under 10x lens). Heat mediated antigen retrieval with Tris-EDTA buffer (pH 9.0).



Immunohistochemical analysis of paraffin-embedded human prostate cancer tissue slide using 15176-1-AP (gamma Tubulin antibody at dilution of 1:200 (under 40x lens). Heat mediated antigen retrieval with Tris-EDTA buffer (pH 9.0).



1X10<sup>6</sup> HeLa cells were intracellularly stained with 0.4 ug Anti-Human Gamma Tubulin (15176-1-AP) and CoraLite®488-Conjugated Goat Anti-Rabbit IgG(H+L) at dilution 1:1000 (red), or 0.4 ug Control Antibody. Cells were fixed with 4% PFA and permeabilized with Flow Cytometry Perm Buffer (PF00011-C).