

For Research Use Only

PSMA7 Polyclonal antibody

Catalog Number: 15219-1-AP

Featured Product

11 Publications



Basic Information

Catalog Number:

15219-1-AP

Size:

150ul, Concentration: 450 ug/ml by Nanodrop and 187 ug/ml by Bradford method using BSA as the standard;

Source:

Rabbit

Isotype:

IgG

Immunogen Catalog Number:

AG7389

GenBank Accession Number:

BC004427

GeneID (NCBI):

5688

UNIPROT ID:

O14818

Full Name:

proteasome (prosome, macropain) subunit, alpha type, 7

Calculated MW:

28 kDa

Observed MW:

28-30 kDa

Purification Method:

Antigen affinity purification

Recommended Dilutions:

WB 1:3000-1:15000

IP 0.5-4.0 ug for 1.0-3.0 mg of total protein lysate

IHC 1:200-1:1000

IF/ICC 1:200-1:800

Applications

Tested Applications:

WB, IHC, IF/ICC, IP, ELISA

Cited Applications:

WB

Species Specificity:

human, mouse, rat

Cited Species:

human, mouse, rat

Note-IHC: suggested antigen retrieval with TE buffer pH 9.0; (*) Alternatively, antigen retrieval may be performed with citrate buffer pH 6.0

Positive Controls:

WB : HepG2 cells, HeLa cells

IP : mouse brain tissue,

IHC : human liver cancer tissue,

IF/ICC : HeLa cells,

Background Information

PSMA7(Proteasome subunit alpha type-7) is also named HSPC and belongs to the peptidase T1A family. It is an α -type subunit of the 20S proteasome core complex and participates in degrading proteins through the ubiquitin-proteasome pathway (UPP) which plays an important role in the regulation of cell proliferation or cell cycle control, transcriptional regulation, immune and stress response, cell differentiation, and apoptosis(PMID: 19442227).

Notable Publications

Author	Pubmed ID	Journal	Application
Jordan J S VerPlank	29076578	Glia	WB
Han Wu	32450067	Exp Cell Res	WB
Yang Liuzhong L	23839082	Cell Physiol Biochem	WB

Storage

Storage:

Store at -20°C. Stable for one year after shipment.

Storage Buffer:

PBS with 0.02% sodium azide and 50% glycerol pH 7.3.

Aliquoting is unnecessary for -20°C storage

*** 20ul sizes contain 0.1% BSA

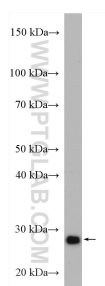
For technical support and original validation data for this product please contact:

T: 1 (888) 4PTGLAB (1-888-478-4522) (toll free in USA), or 1(312) 455-8498 (outside USA)

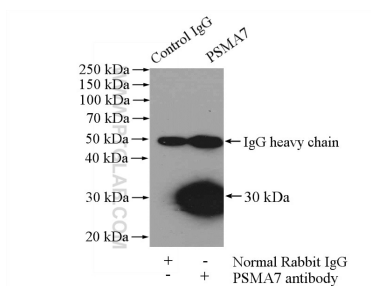
E: proteintech@ptglab.com
W: ptglab.com

This product is exclusively available under Proteintech Group brand and is not available to purchase from any other manufacturer.

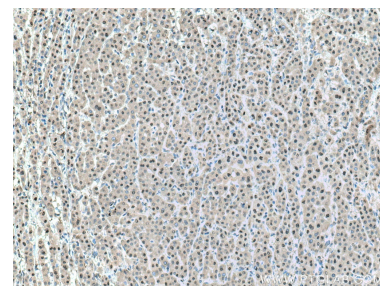
Selected Validation Data



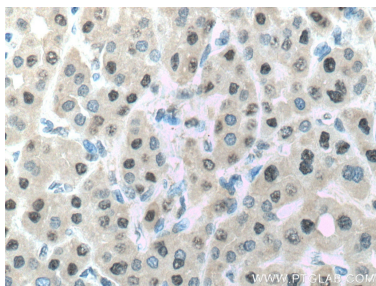
HepG2 cells were subjected to SDS PAGE followed by western blot with 15219-1-AP (PSMA7 antibody) at dilution of 1:8000 incubated at room temperature for 1.5 hours.



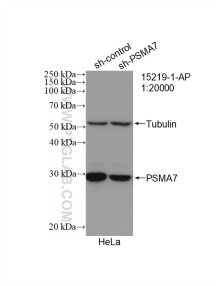
IP result of anti-PSMA7 (IP:15219-1-AP, 4ug; Detection:15219-1-AP 1:500) with mouse brain tissue lysate 4000ug.



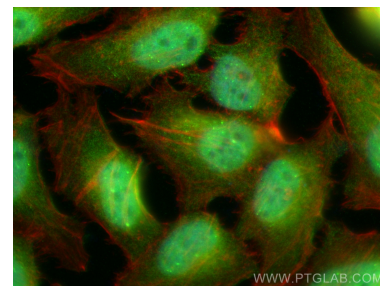
Immunohistochemical analysis of paraffin-embedded human liver cancer tissue slide using 15219-1-AP (PSMA7 antibody) at dilution of 1:1000 (under 10x lens. Heat mediated antigen retrieval with Tris-EDTA buffer (pH 9.0).



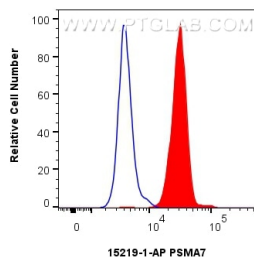
Immunohistochemical analysis of paraffin-embedded human liver cancer tissue slide using 15219-1-AP (PSMA7 antibody) at dilution of 1:1000 (under 40x lens. Heat mediated antigen retrieval with Tris-EDTA buffer (pH 9.0).



WB result of PSMA7 antibody (15219-1-AP; 1:20000; incubated at room temperature for 1.5 hours) with sh-Control and sh-PSMA7 transfected HeLa cells.



Immunofluorescent analysis of (4% PFA) fixed HeLa cells using PSMA7 antibody (15219-1-AP) at dilution of 1:400 and CoraLite@488-Conjugated Goat Anti-Rabbit IgG(H+L) (SA00013-2), CL594-phalloidin (red).



1x10⁶ HepG2 cells were intracellularly stained with 0.25 ug PSMA7 Polyclonal antibody (15219-1-AP) and CoraLite@488-Conjugated Goat Anti-Rabbit IgG(H+L) (SA00013-2)(red), or 0.25 ug Rabbit IgG control Rabbit PolyAb (30000-O-AP) (blue). Cells were fixed with 4% PFA and permeabilized with Flow Cytometry Perm Buffer (PF00011-C).