

For Research Use Only

RPAIN Polyclonal antibody

Catalog Number: 15220-1-AP



Basic Information

Catalog Number:

15220-1-AP

Size:

150ul, Concentration: 300 ug/ml by Nanodrop and 200 ug/ml by Bradford method using BSA as the standard;

Source:

Rabbit

Isotype:

IgG

Immunogen Catalog Number:

AG7392

GenBank Accession Number:

BC004451

GeneID (NCBI):

84268

UNIPROT ID:

Q86UA6

Full Name:

RPA interacting protein

Calculated MW:

25 kDa

Observed MW:

30-45 kDa

Purification Method:

Antigen affinity purification

Recommended Dilutions:

WB 1:200-1:1000

IP 0.5-4.0 ug for 1.0-3.0 mg of total protein lysate

IHC 1:20-1:200

Applications

Tested Applications:

WB, IP, IHC, ELISA

Species Specificity:

human, mouse

Note-IHC: suggested antigen retrieval with TE buffer pH 9.0; (*) Alternatively, antigen retrieval may be performed with citrate buffer pH 6.0

Positive Controls:

WB : A375 cells, mouse ovary tissue, A2780 cells

IP : A375 cells,

IHC : human ovary tumor tissue,

Background Information

PAIN, also named as RIP, mediates the import of RPA complex into the nucleus, possibly via some interaction with importin beta. RPAIN has many isoforms with MW 25-27 kDa, 12 kDa and 16-19 kDa. The publication with PMID: 16135809 reported the MW 30 and 45 kDa.

Storage

Storage:

Store at -20°C. Stable for one year after shipment.

Storage Buffer:

PBS with 0.02% sodium azide and 50% glycerol pH 7.3.

Aliquoting is unnecessary for -20°C storage

*** 20ul sizes contain 0.1% BSA

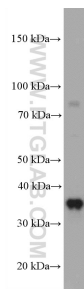
For technical support and original validation data for this product please contact:

T: 1 (888) 4PTGLAB (1-888-478-4522) (toll free in USA), or 1(312) 455-8498 (outside USA)

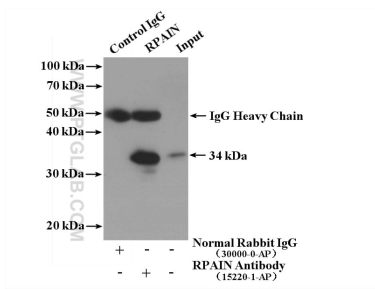
E: proteintech@ptglab.com
W: ptglab.com

This product is exclusively available under Proteintech Group brand and is not available to purchase from any other manufacturer.

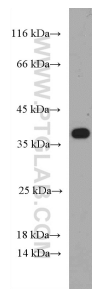
Selected Validation Data



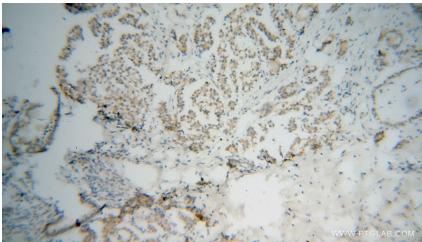
A2780 cells were subjected to SDS PAGE followed by western blot with 15220-1-AP (RPAIN antibody) at dilution of 1:300 incubated at room temperature for 1.5 hours.



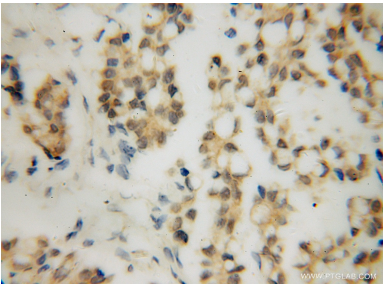
IP result of anti-RPAIN (IP:15220-1-AP, 4ug; Detection:15220-1-AP 1:300) with A375 cells lysate 2200 ug.



A375 cells were subjected to SDS PAGE followed by western blot with 15220-1-AP (RPAIN Antibody) at dilution of 1:300 incubated at room temperature for 1.5 hours.



Immunohistochemical analysis of paraffin-embedded human ovary tumor using 15220-1-AP (RPAIN antibody) at dilution of 1:50 (under 10x lens).



Immunohistochemical analysis of paraffin-embedded human ovary tumor using 15220-1-AP (RPAIN antibody) at dilution of 1:50 (under 40x lens).