

For Research Use Only

HLA class I ABC Polyclonal antibody

Catalog Number: 15240-1-AP

58 Publications



Basic Information

Catalog Number:

15240-1-AP

Size:

150ul, Concentration: 900 ug/ml by Nanodrop;

Source:

Rabbit

Isotype:

IgG

Immunogen Catalog Number:

AG7370

GenBank Accession Number:

BC003069

GeneID (NCBI):

3105

UNIPROT ID:

P04439

Full Name:

major histocompatibility complex, class I, A

Calculated MW:

41 kDa

Observed MW:

44 kDa

Purification Method:

Antigen affinity purification

Recommended Dilutions:

WB 1:5000-1:50000

IP 0.5-4.0 ug for 1.0-3.0 mg of total protein lysate

IHC 1:500-1:2000

IF/ICC 1:50-1:500

Applications

Tested Applications:

WB, IHC, IF/ICC, IP, ELISA

Cited Applications:

WB, IHC, IF, IP, CoIP, RIP, Cell treatment

Species Specificity:

human

Cited Species:

human

Positive Controls:

WB : A549 cells, NCI-H1299 cells, Calu-1 cells, HEK-293 cells, HeLa cells, HepG2 cells, L02 cells

IP : HepG2 cells,

IHC : human tonsillitis tissue, human stomach cancer tissue

IF/ICC : HepG2 cells, Raji cells

Note-IHC: suggested antigen retrieval with TE buffer pH 9.0; (*) Alternatively, antigen retrieval may be performed with citrate buffer pH 6.0

Background Information

Human major histocompatibility complex (MHC) antigens, also referred to as human leukocyte antigens (HLA), are encoded by genes located on the short arm of chromosome 6 (6p21.3). There are two classes of HLA antigens: class I (HLA-A, B and C) and class II (HLA-D). This class I molecules are polymorphic membrane glycoproteins composed of a heavy (alpha) chain (44 kDa) which is encoded by a HLA class I gene (HLA-A, B or C), and β 2-microglobulin light (beta) chain (12 kDa). They are involved in the presentation of foreign antigens to the immune system. (PMID: 667938; 3375250)

Notable Publications

Author	Pubmed ID	Journal	Application
Zachary C Dobbin	25209969	Oncotarget	IHC
Tianxiao Xu	34571002	J Invest Dermatol	WB
Rupert L Mayer	36241641	Nat Commun	WB

Storage

Storage:

Store at -20°C. Stable for one year after shipment.

Storage Buffer:

PBS with 0.02% sodium azide and 50% glycerol, pH7.3

Aliquoting is unnecessary for -20°C storage

*** 20ul sizes contain 0.1% BSA

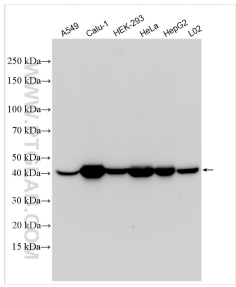
For technical support and original validation data for this product please contact:

T: 1 (888) 4PTGLAB (1-888-478-4522) (toll free in USA), or 1(312) 455-8498 (outside USA)

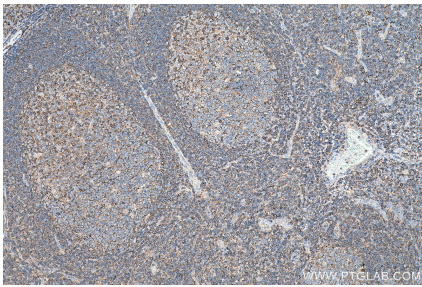
E: proteintech@ptglab.com
W: ptglab.com

This product is exclusively available under Proteintech Group brand and is not available to purchase from any other manufacturer.

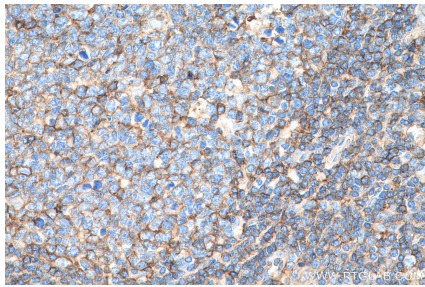
Selected Validation Data



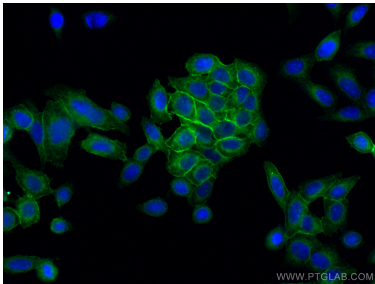
Various lysates were subjected to SDS PAGE followed by western blot with 15240-1-AP (HLA class I ABC antibody) at dilution of 1:10000 incubated at room temperature for 1.5 hours.



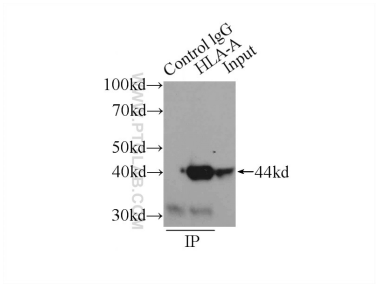
Immunohistochemical analysis of paraffin-embedded human tonsillitis tissue slide using 15240-1-AP (HLA class I ABC antibody) at dilution of 1:1000 (under 10x lens). Heat mediated antigen retrieval with Tris-EDTA buffer (pH 9.0).



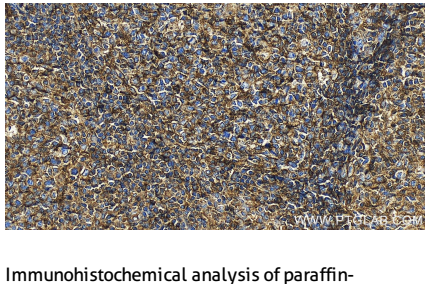
Immunohistochemical analysis of paraffin-embedded human tonsillitis tissue slide using 15240-1-AP (HLA class I ABC antibody) at dilution of 1:1000 (under 40x lens). Heat mediated antigen retrieval with Tris-EDTA buffer (pH 9.0).



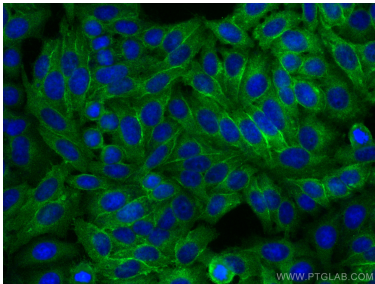
Immunofluorescent analysis of (-20°C Methanol) fixed HepG2 cells using HLA class I ABC antibody (15240-1-AP) at dilution of 1:200 and CoraLite®488-Conjugated AffiniPure Goat Anti-Rabbit IgG(H+L).



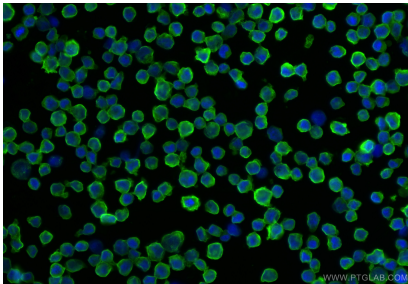
IP result of anti-HLA class I ABC (IP:15240-1-AP, 3ug; Detection:15240-1-AP 1:500) with HepG2 cells lysate 1720ug.



Immunohistochemical analysis of paraffin-embedded human tonsillitis tissue slide using 15240-1-AP (HLA class I ABC antibody) at dilution of 1:1000 (under 20x lens). Heat mediated antigen retrieval with Tris-EDTA buffer (pH 9.0).



Immunofluorescent analysis of (-20°C Ethanol) fixed HepG2 cells using HLA class I ABC antibody (15240-1-AP) at dilution of 1:400 and CoraLite®488-Conjugated AffiniPure Goat Anti-Rabbit IgG(H+L) (SA00013-2).



Immunofluorescent analysis of (4% PFA) fixed Raji cells using HLA class I ABC antibody (15240-1-AP) at dilution of 1:400 and CoraLite®488-Conjugated Goat Anti-Rabbit IgG(H+L) (SA00013-2).