

For Research Use Only

# S6K2 Polyclonal antibody

Catalog Number: 15268-1-AP

2 Publications



## Basic Information

### Catalog Number:

15268-1-AP

### Size:

150ul, Concentration: 200 ug/ml by Nanodrop and 187 ug/ml by Bradford method using BSA as the standard;

### Source:

Rabbit

### Isotype:

IgG

### Immunogen Catalog Number:

AG7371

### GenBank Accession Number:

BC000094

### GeneID (NCBI):

6199

### UNIPROT ID:

Q9UBS0

### Full Name:

ribosomal protein S6 kinase, 70kDa, polypeptide 2

### Calculated MW:

53 kDa

### Observed MW:

54 kDa

### Purification Method:

Antigen affinity purification

### Recommended Dilutions:

WB 1:500-1:3000

IP 0.5-4.0 ug for 1.0-3.0 mg of total protein lysate

IHC 1:50-1:500

IF/ICC 1:50-1:500

## Applications

### Tested Applications:

WB, IHC, IF/ICC, IP, ELISA

### Cited Applications:

WB, IHC

### Species Specificity:

human, mouse, rat

### Cited Species:

human

**Note-IHC: suggested antigen retrieval with TE buffer pH 9.0; (\*) Alternatively, antigen retrieval may be performed with citrate buffer pH 6.0**

### Positive Controls:

WB : MCF7 cells, MCF-7 cells

IP : MCF-7 cells,

IHC : human kidney tissue,

IF/ICC : MCF-7 cells,

## Background Information

RPS6KB2(ribosomal protein S6 kinase beta-2) is also named as 70 kDa ribosomal protein S6 kinase 2(P70S6K2),Serine/threonine-protein kinase 14B(STK14B) and belongs to the protein kinase superfamily. It is activated by mitogenic stimuli, including growth factors, cytokines, and phorbol esters. The activated enzyme phosphorylates several serine residues in the C terminus of ribosomal protein S6(PMID:9878560).

## Notable Publications

Author	Pubmed ID	Journal	Application
Eunus S Ali	35772404	Mol Cell	WB
Linbi Xie	37995823	J Ethnopharmacol	IHC

## Storage

### Storage:

Store at -20°C. Stable for one year after shipment.

### Storage Buffer:

PBS with 0.02% sodium azide and 50% glycerol pH 7.3.

Aliquoting is unnecessary for -20°C storage

\*\*\* 20ul sizes contain 0.1% BSA

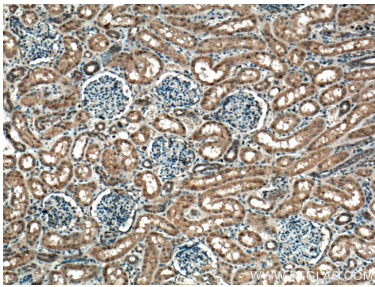
For technical support and original validation data for this product please contact:

T: 1 (888) 4PTGLAB (1-888-478-4522) (toll free in USA), or 1(312) 455-8498 (outside USA)

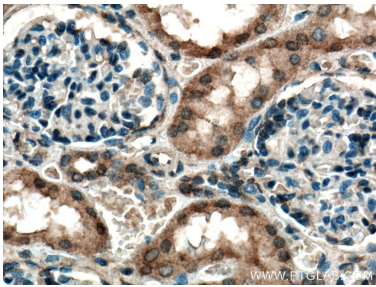
E: [proteintech@ptglab.com](mailto:proteintech@ptglab.com)  
W: [ptglab.com](http://ptglab.com)

This product is exclusively available under Proteintech Group brand and is not available to purchase from any other manufacturer.

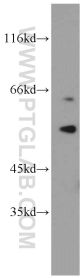
Selected Validation Data



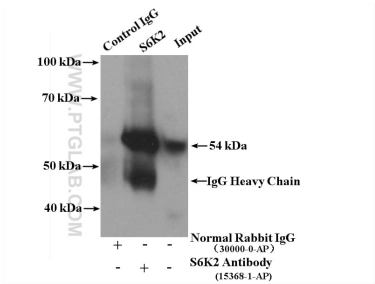
Immunohistochemical analysis of paraffin-embedded human kidney tissue slide using 15268-1-AP (S6K2 antibody) at dilution of 1:200 (under 10x lens). Heat mediated antigen retrieval with Tris-EDTA buffer (pH 9.0).



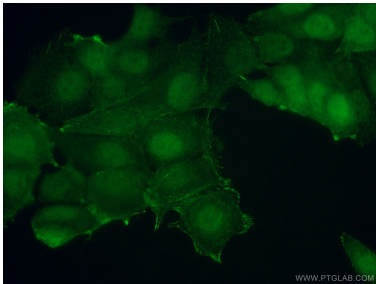
Immunohistochemical analysis of paraffin-embedded human kidney tissue slide using 15268-1-AP (S6K2 antibody) at dilution of 1:200 (under 40x lens). Heat mediated antigen retrieval with Tris-EDTA buffer (pH 9.0).



MCF7 cells were subjected to SDS PAGE followed by western blot with 15268-1-AP (S6K2 antibody) at dilution of 1:1500 incubated at room temperature for 1.5 hours.



IP result of anti-S6K2 (IP:15268-1-AP, 4ug; Detection:15268-1-AP 1:1000) with MCF-7 cells lysate 2800ug.



Immunofluorescent analysis of (10% Formaldehyde) fixed MCF-7 cells using 15268-1-AP (S6K2 antibody) at dilution of 1:50 and Alexa Fluor 488-conjugated AffiniPure Goat Anti-Rabbit IgG(H+L).