

For Research Use Only

POLE3 Polyclonal antibody

Catalog Number: 15278-1-AP

2 Publications



Basic Information

Catalog Number:

15278-1-AP

Size:

150ul, Concentration: 240 ug/ml by Nanodrop and 187 ug/ml by Bradford method using BSA as the standard;

Source:

Rabbit

Isotype:

IgG

Immunogen Catalog Number:

AG7396

GenBank Accession Number:

BC003166

GeneID (NCBI):

54107

UNIPROT ID:

Q9NRF9

Full Name:

polymerase (DNA directed), epsilon 3 (p17 subunit)

Calculated MW:

17 kDa

Observed MW:

17 kDa

Purification Method:

Antigen affinity purification

Recommended Dilutions:

WB 1:1000-1:4000

IP 0.5-4.0 ug for 1.0-3.0 mg of total protein lysate

IHC 1:20-1:200

IF/ICC 1:50-1:500

Applications

Tested Applications:

WB, IHC, IF/ICC, IP, ELISA

Cited Applications:

WB

Species Specificity:

human

Cited Species:

human

Note-IHC: suggested antigen retrieval with TE buffer pH 9.0; (*) Alternatively, antigen retrieval may be performed with citrate buffer pH 6.0

Positive Controls:

WB : HeLa cells, MCF-7 cells, HepG2 cells

IP : HepG2 cells,

IHC : human liver cancer tissue,

IF/ICC : HepG2 cells,

Notable Publications

Author	Pubmed ID	Journal	Application
Wencheng Zhang	34568067	Front Oncol	WB
Chuanyou Yi	30053504	Int J Biochem Cell Biol	WB

Storage

Storage:

Store at -20°C. Stable for one year after shipment.

Storage Buffer:

PBS with 0.02% sodium azide and 50% glycerol pH 7.3.

Aliquoting is unnecessary for -20°C storage

*** 20ul sizes contain 0.1% BSA

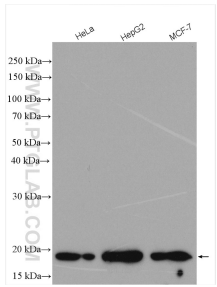
For technical support and original validation data for this product please contact:

T: 1 (888) 4PTGLAB (1-888-478-4522) (toll free in USA), or 1(312) 455-8498 (outside USA)

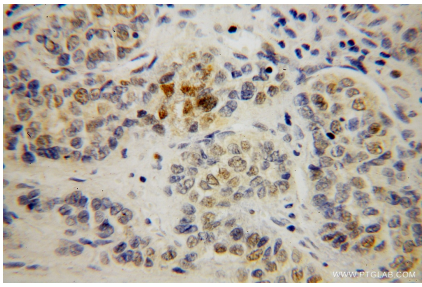
E: proteintech@ptglab.com
W: ptglab.com

This product is exclusively available under Proteintech Group brand and is not available to purchase from any other manufacturer.

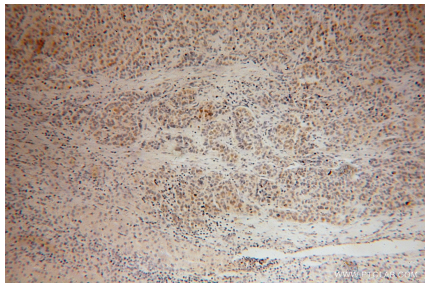
Selected Validation Data



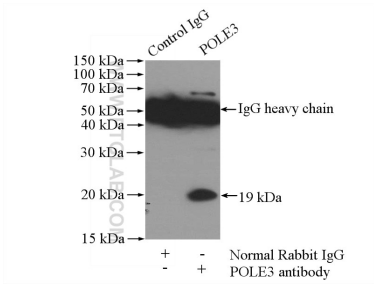
Various lysates were subjected to SDS PAGE followed by western blot with 15278-1-AP (PLE3 antibody) at dilution of 1:2000 incubated at room temperature for 1.5 hours.



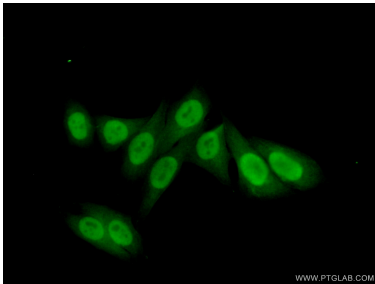
Immunohistochemical analysis of paraffin-embedded human liver cancer using 15278-1-AP (PLE3 antibody) at dilution of 1:100 (under 40x lens).



Immunohistochemical analysis of paraffin-embedded human liver cancer using 15278-1-AP (PLE3 antibody) at dilution of 1:100 (under 10x lens).



IP result of anti-POLE3 (IP:15278-1-AP, 4ug; Detection:15278-1-AP 1:1000) with HepG2 cells lysate 1800ug.



Immunofluorescent analysis of (10% Formaldehyde) fixed HepG2 cells using 15278-1-AP (PLE3 antibody) at dilution of 1:50 and Alexa Fluor 488-conjugated Goat Anti-Rabbit IgG(H+L).