

For Research Use Only

GRB14 Polyclonal antibody

Catalog Number: 15298-1-AP



Basic Information

Catalog Number: 15298-1-AP	GenBank Accession Number: BC053559	Purification Method: Antigen affinity purification
Size: 150ul , Concentration: 200 µg/ml by Nanodrop and 153 µg/ml by Bradford method using BSA as the standard;	GeneID (NCBI): 2888	Recommended Dilutions: WB 1:500-1:1000 IHC 1:20-1:200
Source: Rabbit	Full Name: growth factor receptor-bound protein 14	
Isotype: IgG	Calculated MW: 61 kDa	
Immunogen Catalog Number: AG7554	Observed MW: 61 kDa	

Applications

Tested Applications: IHC, WB, ELISA	Positive Controls: WB : DU 145 cells, IHC : human ovary tumor tissue,
Species Specificity: human, mouse, rat	
Note-IHC: suggested antigen retrieval with TE buffer pH 9.0; (*) Alternatively, antigen retrieval may be performed with citrate buffer pH 6.0	

Background Information

GRB14 belongs to the GRB7/10/14 family. It is an adapter protein which modulates coupling of cell surface receptor kinases with specific signaling pathways. GRB14 is a target for a PDGF regulated serine kinase, an interaction that does not require PDGFR-GRB14 association. GRB14 is about 58-65kd in WB test.

Storage

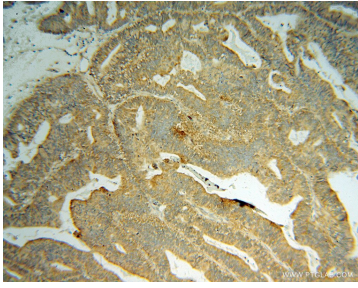
Storage:
Store at -20°C. Stable for one year after shipment.
Storage Buffer:
PBS with 0.02% sodium azide and 50% glycerol pH 7.3.
Aliquoting is unnecessary for -20°C storage

*** 20ul sizes contain 0.1% BSA

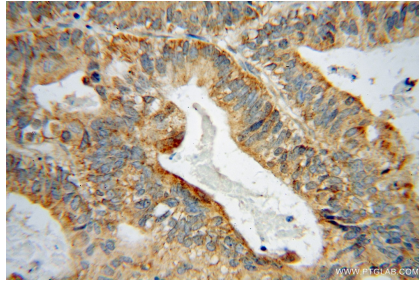
For technical support and original validation data for this product please contact:
T: 1 (888) 4PTGLAB (1-888-478-4522) (toll free in USA), or 1(312) 455-8498 (outside USA)
E: proteintech@ptglab.com
W: ptglab.com

This product is exclusively available under Proteintech Group brand and is not available to purchase from any other manufacturer.

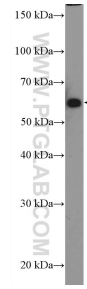
Selected Validation Data



Immunohistochemical analysis of paraffin-embedded human ovary tumor using 15298-1-AP (GRB14 antibody) at dilution of 1:50 (under 10x lens).



Immunohistochemical analysis of paraffin-embedded human ovary tumor using 15298-1-AP (GRB14 antibody) at dilution of 1:50 (under 40x lens).



DU 145 cells were subjected to SDS PAGE followed by western blot with 15298-1-AP (GRB14 Antibody) at dilution of 1:600 incubated at room temperature for 1.5 hours.