

For Research Use Only

MPPE1 Polyclonal antibody

Catalog Number: 15313-1-AP



Basic Information

Catalog Number: 15313-1-AP	GenBank Accession Number: BC002877	Purification Method: Antigen affinity purification
Size: 150ul , Concentration: 450 µg/ml by Nanodrop and 327 µg/ml by Bradford method using BSA as the standard;	GeneID (NCBI): 65258	Recommended Dilutions: WB 1:200-1:1000
Source: Rabbit	Full Name: metallophosphoesterase 1	
Isotype: IgG	Calculated MW: 45 kDa	
Immunogen Catalog Number: AG7547	Observed MW: 45 kda	

Applications

Tested Applications: WB,ELISA	Positive Controls: WB : mouse brain tissue,
Species Specificity: human, mouse, rat	

Background Information

Storage

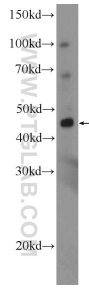
Storage:
Store at -20°C. Stable for one year after shipment.
Storage Buffer:
PBS with 0.02% sodium azide and 50% glycerol pH 7.3.
Aliquoting is unnecessary for -20°C storage

*** 20ul sizes contain 0.1% BSA

For technical support and original validation data for this product please contact:
T: 1 (888) 4PTGLAB (1-888-478-4522) (toll free in USA), or 1(312) 455-8498 (outside USA) E: proteintech@ptglab.com
W: ptglab.com

This product is exclusively available under Proteintech Group brand and is not available to purchase from any other manufacturer.

Selected Validation Data



mouse brain tissue were subjected to SDS PAGE followed by western blot with 15313-1-AP (MPPE1 Antibody) at dilution of 1:300 incubated at room temperature for 1.5 hours.