

For Research Use Only

# THOC6 Polyclonal antibody

Catalog Number: 15316-1-AP

Featured Product

2 Publications



## Basic Information

### Catalog Number:

15316-1-AP

### Size:

150ul, Concentration: 600 ug/ml by Nanodrop;

### Source:

Rabbit

### Isotype:

IgG

### Immunogen Catalog Number:

AG7561

### GenBank Accession Number:

BC003118

### GeneID (NCBI):

79228

### UNIPROT ID:

Q86W42

### Full Name:

THO complex 6 homolog (Drosophila)

### Calculated MW:

38 kDa

### Observed MW:

35 kDa

### Purification Method:

Antigen affinity purification

### Recommended Dilutions:

WB: 1:500-1:2000

IP: 0.5-4.0 ug for 1.0-3.0 mg of total protein lysate

IHC: 1:20-1:200

## Applications

### Tested Applications:

WB, IP, IHC, ELISA

### Cited Applications:

WB

### Species Specificity:

human, mouse, rat

### Cited Species:

human, mouse

**Note-IHC: suggested antigen retrieval with TE buffer pH 9.0; (\*) Alternatively, antigen retrieval may be performed with citrate buffer pH 6.0**

### Positive Controls:

WB : A431 cells, mouse ovary tissue, Neuro-2a cells

IP : A431 cells,

IHC : human ovary tumor tissue,

## Notable Publications

Author	Pubmed ID	Journal	Application
Qi Dong	39885145	Bone Res	WB
Toshie Sakuma	24618812	Viruses	WB

## Storage

### Storage:

Store at -20°C. Stable for one year after shipment.

### Storage Buffer:

PBS with 0.02% sodium azide and 50% glycerol, pH7.3

Aliquoting is unnecessary for -20°C storage

\*\*\* 20ul sizes contain 0.1% BSA

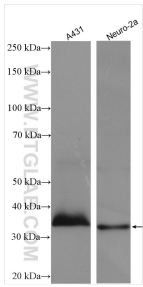
For technical support and original validation data for this product please contact:

T: 1 (888) 4PTGLAB (1-888-478-4522) (toll free in USA), or 1(312) 455-8498 (outside USA)

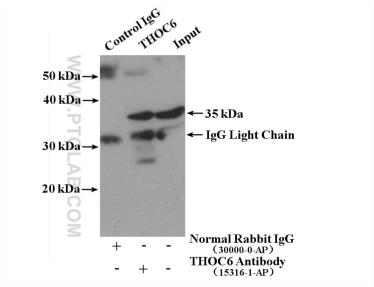
E: [proteintech@ptglab.com](mailto:proteintech@ptglab.com)  
W: [ptglab.com](http://ptglab.com)

This product is exclusively available under Proteintech Group brand and is not available to purchase from any other manufacturer.

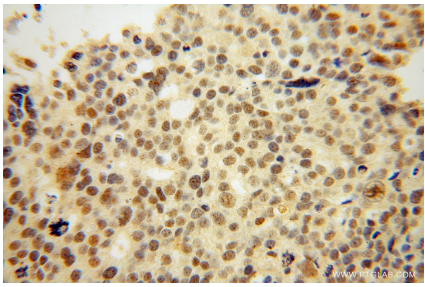
Selected Validation Data



Various lysates were subjected to SDS PAGE followed by western blot with 15316-1-AP (THOC6 antibody) at dilution of 1:1000 incubated at room temperature for 1.5 hours.



IP result of anti-THOC6 (IP:15316-1-AP, 4ug; Detection:15316-1-AP 1:300) with A431 cells lysate 2280 ug.



Immunohistochemical analysis of paraffin-embedded human ovary tumor using 15316-1-AP (THOC6 antibody) at dilution of 1:50 (under 40x lens).