

For Research Use Only

SAR1A Polyclonal antibody

Catalog Number: 15350-1-AP

Featured Product

7 Publications



Basic Information

Catalog Number: 15350-1-AP	GenBank Accession Number: BC003658	Purification Method: Antigen affinity purification
Size: 150ul, Concentration: 333 µg/ml by Nanodrop and 333 µg/ml by Bradford method using BSA as the standard;	GeneID (NCBI): 56681	Recommended Dilutions: WB 1:500-1:2000 IHC 1:20-1:200
Source: Rabbit	Full Name: SAR1 homolog A (S. cerevisiae)	
Isotype: IgG	Calculated MW: 22 kDa	
Immunogen Catalog Number: AG7596	Observed MW: 23-25 kDa	

Applications

Tested Applications:

IHC, WB, ELISA

Cited Applications:

IHC, IP, WB

Species Specificity:

human, mouse, rat

Cited Species:

human, mouse, rat

Note-IHC: suggested antigen retrieval with TE buffer pH 9.0; (*) Alternatively, antigen retrieval may be performed with citrate buffer pH 6.0

Positive Controls:

WB: mouse liver tissue, HeLa cells, HT-1080 cells

IHC: human hepatocirrhosis tissue, human liver tissue, human skeletal muscle tissue

Background Information

Notable Publications

Author	Pubmed ID	Journal	Application
Mengyue You	36252341	Redox Biol	WB
Hongxia Li	30400968	Clin Epigenetics	IHC, WB
Ruimin Zhu	31158417	Mol Cell Endocrinol	WB

Storage

Storage:

Store at -20°C. Stable for one year after shipment.

Storage Buffer:

PBS with 0.02% sodium azide and 50% glycerol pH 7.3.

Aliquoting is unnecessary for -20°C storage

*** 20ul sizes contain 0.1% BSA

For technical support and original validation data for this product please contact:

T: 1 (888) 4PTGLAB (1-888-478-4522) (toll free in USA), or 1(312) 455-8498 (outside USA)

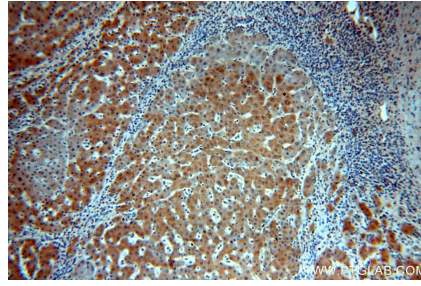
E: proteintech@ptglab.com
W: ptglab.com

This product is exclusively available under Proteintech Group brand and is not available to purchase from any other manufacturer.

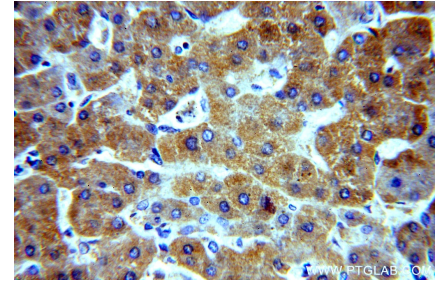
Selected Validation Data



mouse liver tissue were subjected to SDS PAGE followed by western blot with 15350-1-AP (SAR1A antibody) at dilution of 1:500 incubated at room temperature for 1.5 hours.



Immunohistochemical analysis of paraffin-embedded human hepatocirrhosis using 15350-1-AP (SAR1A antibody) at dilution of 1:100 (under 10x lens).



Immunohistochemical analysis of paraffin-embedded human hepatocirrhosis using 15350-1-AP (SAR1A antibody) at dilution of 1:100 (under 40x lens).