

For Research Use Only

RLBP1 Polyclonal antibody

Catalog Number: 15356-1-AP

18 Publications



Basic Information

Catalog Number:

15356-1-AP

Size:

150ul, Concentration: 300 ug/ml by Nanodrop and 213 ug/ml by Bradford method using BSA as the standard;

Source:

Rabbit

Isotype:

IgG

Immunogen Catalog Number:

AG7602

GenBank Accession Number:

BC004199

GeneID (NCBI):

6017

UNIPROT ID:

P12271

Full Name:

retinaldehyde binding protein 1

Calculated MW:

36 kDa

Observed MW:

36 kDa

Purification Method:

Antigen affinity purification

Recommended Dilutions:

WB: 1:500-1:2000

IHC: 1:50-1:500

IF-P: 1:200-1:800

IF/ICC: 1:50-1:500

Applications

Tested Applications:

WB, IHC, IF/ICC, IF-P, ELISA

Cited Applications:

WB, IHC, IF

Species Specificity:

human, mouse, rat

Cited Species:

human, mouse, rat, zebrafish

Note-IHC: suggested antigen retrieval with TE buffer pH 9.0; (*) Alternatively, antigen retrieval may be performed with citrate buffer pH 6.0

Positive Controls:

WB: mouse eye tissue, HepG2 cells, mouse retina tissue, rat eye tissue

IHC: mouse eye tissue, human eye tissue

IF-P: mouse eye tissue, Retinal organoids

IF/ICC: HeLa cells, Y79 cells

Background Information

RLBP1 (Retinaldehyde-binding protein 1) is also named as cellular retinaldehyde-binding protein (CRLBP). CRLBP, a 36-kDa aqueous soluble carrier, is expressed in abundance by both retinal pigment epithelial (RPE) and Muller cells of retina and is important for rod- and cone-driven vision (PMID: 32188692). Retinal RLBP1 expression was decreased in diabetes, and its overexpression in Müller glia mitigated DR-associated neurovascular degeneration (PMID: 33674409).

Notable Publications

| Author | Pubmed ID | Journal | Application |
|-------------|-----------|--------------------|-------------|
| Xiaoman Zhu | 36096985 | Cell Death Dis | WB,IF |
| Ting Zhang | 36064625 | Stem Cell Res Ther | IF |
| Haibin Tian | 36185374 | iScience | IF |

Storage

Storage:

Store at -20°C. Stable for one year after shipment.

Storage Buffer:

PBS with 0.02% sodium azide and 50% glycerol, pH7.3

Aliquoting is unnecessary for -20°C storage

*** 20ul sizes contain 0.1% BSA

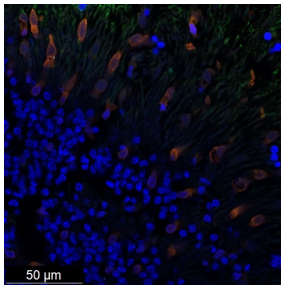
For technical support and original validation data for this product please contact:

T: 1 (888) 4PTGLAB (1-888-478-4522) (toll free in USA), or 1(312) 455-8498 (outside USA)

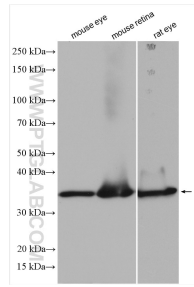
E: proteintech@ptglab.com
W: ptglab.com

This product is exclusively available under Proteintech Group brand and is not available to purchase from any other manufacturer.

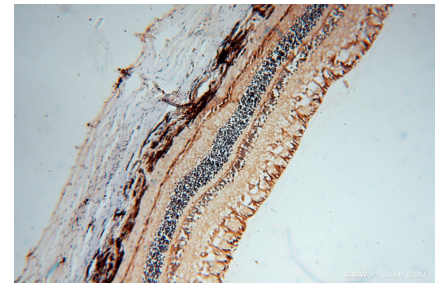
Selected Validation Data



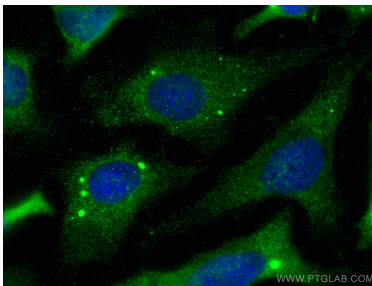
Retinal organoids (day 250) generated from human induced pluripotent stem cells (iPSCs) and fixed with 4% PFA. Stained for Tubulin beta 3/TUJ1 using 66375-1-Ig at 1:500 dilution (green) and CRALBP using 15356-1-AP at 1:400 (red). Nuclear stain DAPI (blue). Scale bar = 50 μm. Data generated by Alessandro Bellapianta at Johannes Kepler Universitat, Austria.



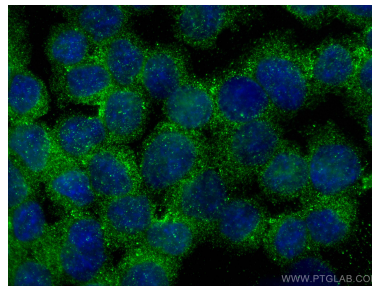
Various lysates were subjected to SDS PAGE followed by western blot with 15356-1-AP (RLBP1 antibody) at dilution of 1:1000 incubated at room temperature for 1.5 hours.



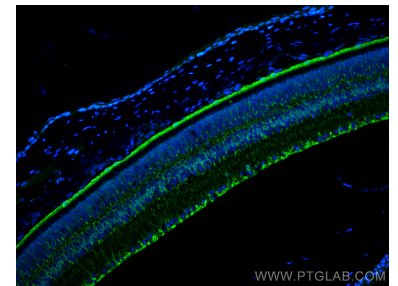
Immunohistochemical analysis of paraffin-embedded human eye using 15356-1-AP (RLBP1 antibody) at dilution of 1:50 (under 10x lens).



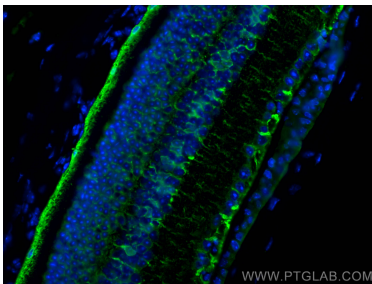
Immunofluorescent analysis of (-20°C Methanol) fixed HeLa cells using RLBP1 antibody (15356-1-AP) at dilution of 1:200 and CoraLite®488-Conjugated Goat Anti-Rabbit IgG(H+L).



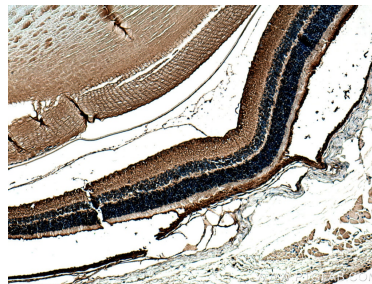
Immunofluorescent analysis of (4% PFA) fixed Y79 cells using RLBP1 antibody (15356-1-AP) at dilution of 1:200 and CoraLite®488-Conjugated Goat Anti-Rabbit IgG(H+L).



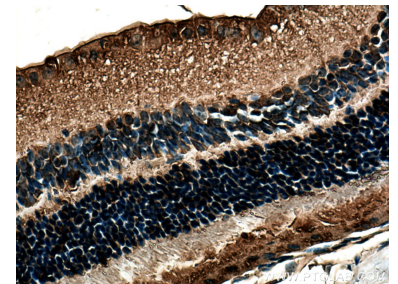
Immunofluorescent analysis of (4% PFA) fixed paraffin-embedded mouse eye tissue using RLBP1 antibody (15356-1-AP) at dilution of 1:400 and CoraLite®488-Conjugated Goat Anti-Rabbit IgG(H+L) (SA00013-2). Heat mediated antigen retrieval with Tris-EDTA buffer (pH 9.0).



Immunofluorescent analysis of (4% PFA) fixed paraffin-embedded mouse eye tissue using RLBP1 antibody (15356-1-AP) at dilution of 1:400 and CoraLite®488-Conjugated Goat Anti-Rabbit IgG(H+L) (SA00013-2). Heat mediated antigen retrieval with Tris-EDTA buffer (pH 9.0).



Immunohistochemical analysis of paraffin-embedded mouse eye tissue slide using 15356-1-AP (RLBP1 antibody) at dilution of 1:200 (under 10x lens). Heat mediated antigen retrieval with Tris-EDTA buffer (pH 9.0).



Immunohistochemical analysis of paraffin-embedded mouse eye tissue slide using 15356-1-AP (RLBP1 antibody) at dilution of 1:200 (under 40x lens). Heat mediated antigen retrieval with Tris-EDTA buffer (pH 9.0).