

For Research Use Only

SPTLC1 Polyclonal antibody

Catalog Number: 15376-1-AP

Featured Product

15 Publications



Basic Information

Catalog Number:

15376-1-AP

Size:

150ul, Concentration: 500 ug/ml by Nanodrop and 200 ug/ml by Bradford method using BSA as the standard;

Source:

Rabbit

Isotype:

IgG

Immunogen Catalog Number:

AG1162

GenBank Accession Number:

BC007085

GeneID (NCBI):

10558

UNIPROT ID:

O15269

Full Name:

serine palmitoyltransferase, long chain base subunit 1

Calculated MW:

53 kDa

Observed MW:

55 kDa

Purification Method:

Antigen affinity purification

Recommended Dilutions:

WB 1:1000-1:4000

IP 0.5-4.0 ug for 1.0-3.0 mg of total protein lysate

IHC 1:20-1:200

Applications

Tested Applications:

WB, IHC, IP, ELISA

Cited Applications:

WB, IHC

Species Specificity:

human, mouse, rat

Cited Species:

human, mouse, rat

Note-IHC: suggested antigen retrieval with TE buffer pH 9.0; (*) Alternatively, antigen retrieval may be performed with citrate buffer pH 6.0

Positive Controls:

WB : Jurkat cells, HEK-293 cells, human liver tissue, HepG2 cells

IP : HEK-293 cells,

IHC : human colon cancer tissue,

Background Information

SPTLC1 is a subunit of serine palmitoyltransferase (SPT) which is the key enzyme in sphingolipid biosynthesis and is essential for embryogenesis and cell survival. Mutations in the SPTLC1 gene (C133W, C133Y, V144D, and G387A) were reported to be responsible for the development of an inherited sensory neuropathy (hereditary sensory neuropathy type I, HSN1).

Notable Publications

Author	Pubmed ID	Journal	Application
Thekla Cordes	36115594	J Lipid Res	WB
Violeta Heras	33080217	Cell Metab	IHC
Sophia Karandashova	29025713	Am J Physiol Lung Cell Mol Physiol	WB

Storage

Storage:

Store at -20°C. Stable for one year after shipment.

Storage Buffer:

PBS with 0.02% sodium azide and 50% glycerol pH 7.3.

Aliquoting is unnecessary for -20°C storage

*** 20ul sizes contain 0.1% BSA

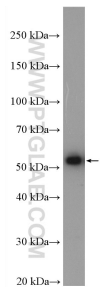
For technical support and original validation data for this product please contact:

T: 1 (888) 4PTGLAB (1-888-478-4522) (toll free in USA), or 1(312) 455-8498 (outside USA)

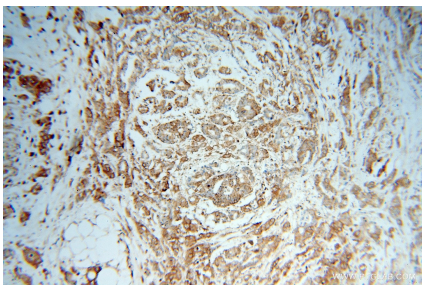
E: proteintech@ptglab.com
W: ptglab.com

This product is exclusively available under Proteintech Group brand and is not available to purchase from any other manufacturer.

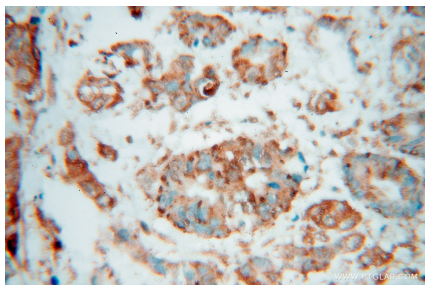
Selected Validation Data



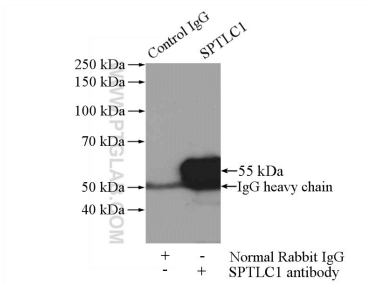
Jurkat cells were subjected to SDS PAGE followed by western blot with 15376-1-AP (SPTLC1 antibody) at dilution of 1:2000 incubated at room temperature for 1.5 hours.



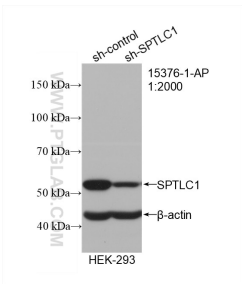
Immunohistochemical analysis of paraffin-embedded human colon cancer using 15376-1-AP (SPTLC1 antibody) at dilution of 1:100 (under 10x lens).



Immunohistochemical analysis of paraffin-embedded human colon cancer using 15376-1-AP (SPTLC1 antibody) at dilution of 1:100 (under 40x lens).



IP result of anti-SPTLC1 (IP:15376-1-AP, 4ug; Detection:15376-1-AP 1:500) with HEK-293 cells lysate 880ug.



WB result of SPTLC1 antibody (15376-1-AP; 1:2000; incubated at room temperature for 1.5 hours) with sh-Control and sh-SPTLC1 transfected HEK-293 cells.