

For Research Use Only

BDH1 Polyclonal antibody

Catalog Number: 15417-1-AP

Featured Product

27 Publications



Basic Information

Catalog Number:

15417-1-AP

Size:

150ul, Concentration: 500 ug/ml by Nanodrop;

Source:

Rabbit

Isotype:

IgG

Immunogen Catalog Number:

AG7705

GenBank Accession Number:

BC005844

GeneID (NCBI):

622

UNIPROT ID:

Q02338

Full Name:

3-hydroxybutyrate dehydrogenase, type 1

Calculated MW:

38 kDa

Observed MW:

31 kDa

Purification Method:

Antigen affinity purification

Recommended Dilutions:

WB 1:2000-1:10000

IP 0.5-4.0 ug for 1.0-3.0 mg of total protein lysate

IHC 1:50-1:500

IF-P 1:50-1:500

Applications

Tested Applications:

WB, IHC, IF-P, IP, ELISA

Cited Applications:

WB, IHC, IF

Species Specificity:

human, mouse, rat

Cited Species:

human, mouse, rat

Positive Controls:

WB: HepG2 cells, mouse liver tissue, rat liver tissue, HT-29 cells, human liver tissue, rat brain tissue, COLO 320 cells, mouse brain tissue, mouse heart tissue

IP: mouse liver tissue,

IHC: rat brain tissue, human liver cancer tissue

IF-P: mouse liver tissue,

Note-IHC: suggested antigen retrieval with TE buffer pH 9.0; (*) Alternatively, antigen retrieval may be performed with citrate buffer pH 6.0

Background Information

BDH1 (3-hydroxybutyrate dehydrogenase, type 1) is a 343 amino acid protein that localizes to the mitochondrial matrix and belongs to the short-chain dehydrogenases/reductases (SDR) family. The deduced 343 amino acid protein contains a 46 residue leader peptide, which is cleaved to produce the mature form. It is a lipid-requiring mitochondrial enzyme with a specific requirement of phosphatidylcholine (PC).

Notable Publications

Author	Pubmed ID	Journal	Application
Nguyen Ngoc Trang	36184012	J Nutr Biochem	WB
De Huang	27644987	Cell Res	WB
Tim Dükking	36112685	Sci Adv	WB

Storage

Storage:

Store at -20°C. Stable for one year after shipment.

Storage Buffer:

PBS with 0.02% sodium azide and 50% glycerol pH 7.3.

Aliquoting is unnecessary for -20°C storage

*** 20ul sizes contain 0.1% BSA

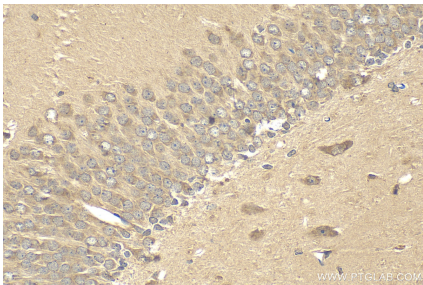
For technical support and original validation data for this product please contact:

T: 1 (888) 4PTGLAB (1-888-478-4522) (toll free in USA), or 1(312) 455-8498 (outside USA)

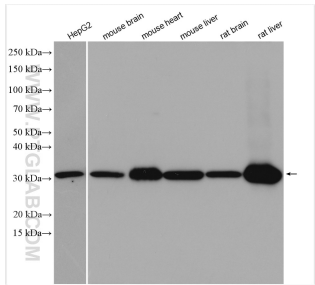
E: proteintech@ptglab.com
W: ptglab.com

This product is exclusively available under Proteintech Group brand and is not available to purchase from any other manufacturer.

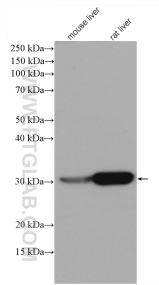
Selected Validation Data



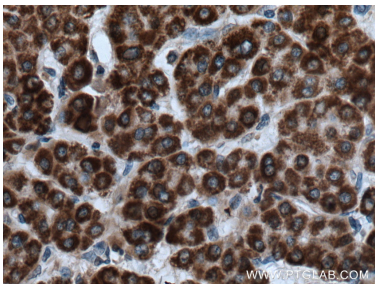
Immunohistochemical analysis of paraffin-embedded rat brain tissue slide using 15417-1-AP (BDH1 antibody) at dilution of 1:200 (under 40x lens). Heat mediated antigen retrieval with Tris-EDTA buffer (pH 9.0).



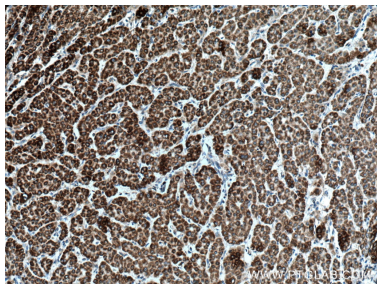
Various lysates were subjected to SDS PAGE followed by western blot with 15417-1-AP (BDH1 antibody) at dilution of 1:5000 incubated at room temperature for 1.5 hours.



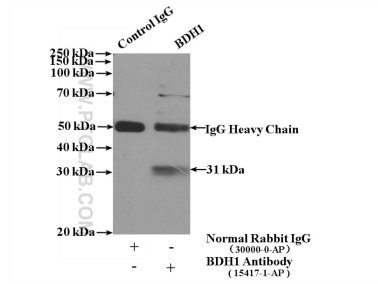
mouse liver tissue were subjected to SDS PAGE followed by western blot with 15417-1-AP (BDH1 antibody) at dilution of 1:2000 incubated at room temperature for 1.5 hours.



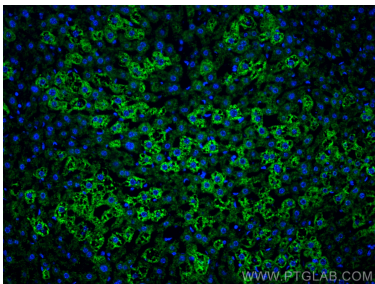
Immunohistochemical analysis of paraffin-embedded human liver cancer tissue slide using 15417-1-AP (BDH1 antibody) at dilution of 1:200 (under 40x lens). Heat mediated antigen retrieval with Tris-EDTA buffer (pH 9.0).



Immunohistochemical analysis of paraffin-embedded human liver cancer tissue slide using 15417-1-AP (BDH1 antibody) at dilution of 1:200 (under 10x lens). Heat mediated antigen retrieval with Tris-EDTA buffer (pH 9.0).



IP result of anti-BDH1 (IP:15417-1-AP, 4ug; Detection:15417-1-AP 1:300) with mouse liver tissue lysate 4000ug.



Immunofluorescent analysis of (4% PFA) fixed paraffin-embedded mouse liver tissue using BDH1 antibody (15417-1-AP) at dilution of 1:200 and CoraLite®488-Conjugated Goat Anti-Rabbit IgG(H+L) (SA00013-2). Heat mediated antigen retrieval with Tris-EDTA buffer (pH 9.0).