

For Research Use Only

RAB2 Polyclonal antibody

Catalog Number: 15420-1-AP

Featured Product

13 Publications



Basic Information

Catalog Number:

15420-1-AP

Size:

150ul, Concentration: 400 ug/ml by Nanodrop and 300 ug/ml by Bradford method using BSA as the standard;

Source:

Rabbit

Isotype:

IgG

Immunogen Catalog Number:

AG7708

GenBank Accession Number:

BC008929

GeneID (NCBI):

5862

UNIPROT ID:

P61019

Full Name:

RAB2A, member RAS oncogene family

Calculated MW:

24 kDa

Observed MW:

24 kDa

Purification Method:

Antigen affinity purification

Recommended Dilutions:

WB 1:1000-1:4000

IHC 1:20-1:200

Applications

Tested Applications:

WB, IHC, ELISA

Cited Applications:

WB, IF

Species Specificity:

human, mouse, rat

Cited Species:

human, mouse

Note-IHC: suggested antigen retrieval with TE buffer pH 9.0; (*) Alternatively, antigen retrieval may be performed with citrate buffer pH 6.0

Positive Controls:

WB : mouse brain tissue, HEK-293 cells, HeLa cells, mouse lung tissue, rat brain tissue

IHC : human brain tissue, human breast cancer tissue

Background Information

The protein belongs to the Rab family, members of which are small molecular weight guanosine triphosphatases (GTPases) that contain highly conserved domains involved in GTP binding and hydrolysis. The Rabs are membrane-bound proteins, involved in vesicular fusion and trafficking. This protein is a resident of pre-Golgi intermediates, and is required for protein transport from the endoplasmic reticulum (ER) to the Golgi complex. This antibody can recognize both RAB2A and RAB2B.

Notable Publications

Author	Pubmed ID	Journal	Application
Xiaolan Lian	29848341	J Hematol Oncol	WB
Erin P Smith	32234817	mBio	WB
Naoya Ueda	26896628	J Neurochem	WB

Storage

Storage:

Store at -20°C. Stable for one year after shipment.

Storage Buffer:

PBS with 0.02% sodium azide and 50% glycerol pH 7.3.

Aliquoting is unnecessary for -20°C storage

*** 20ul sizes contain 0.1% BSA

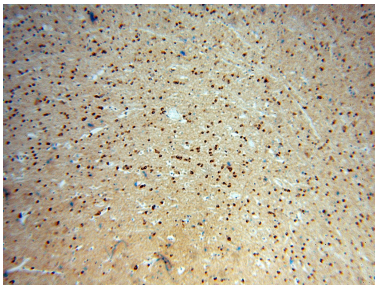
For technical support and original validation data for this product please contact:

T: 1 (888) 4PTGLAB (1-888-478-4522) (toll free in USA), or 1(312) 455-8498 (outside USA)

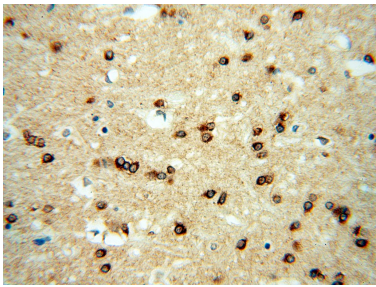
E: proteintech@ptglab.com
W: ptglab.com

This product is exclusively available under Proteintech Group brand and is not available to purchase from any other manufacturer.

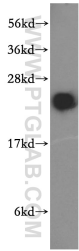
Selected Validation Data



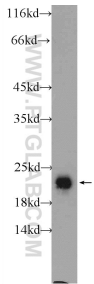
Immunohistochemical analysis of paraffin-embedded human brain using 15420-1-AP (RAB2 antibody) at dilution of 1:100 (under 10x lens).



Immunohistochemical analysis of paraffin-embedded human brain using 15420-1-AP (RAB2 antibody) at dilution of 1:100 (under 40x lens).



mouse brain tissue were subjected to SDS PAGE followed by western blot with 15420-1-AP (RAB2 antibody) at dilution of 1:1000 incubated at room temperature for 1.5 hours.



rat brain tissue were subjected to SDS PAGE followed by western blot with 15420-1-AP (RAB2 antibody) at dilution of 1:1000 incubated at room temperature for 1.5 hours.