

For Research Use Only

PPT2 Polyclonal antibody

Catalog Number: 15429-1-AP **3 Publications**



Basic Information

Catalog Number:

15429-1-AP

Size:

150ul , Concentration: 300 ug/ml by Nanodrop and 200 ug/ml by Bradford method using BSA as the standard;

Source:

Rabbit

Isotype:

IgG

Immunogen Catalog Number:

AG7671

GenBank Accession Number:

BC001355

GeneID (NCBI):

9374

UNIPROT ID:

Q9UMR5

Full Name:

palmitoyl-protein thioesterase 2

Calculated MW:

34 kDa

Observed MW:

29 kDa

Purification Method:

Antigen affinity purification

Recommended Dilutions:

WB 1:500-1:1000

Applications

Tested Applications:

WB, ELISA

Cited Applications:

WB

Species Specificity:

human, mouse, rat

Cited Species:

human, mouse

Positive Controls:

WB : mouse kidney tissue,

Notable Publications

Author	Pubmed ID	Journal	Application
Youjing Zhang	39528731	EMBO Rep	WB
Hui Xu	39394143	J Ovarian Res	WB
Amanda Sales Conniff	38543257	Pharmaceutics	WB

Storage

Storage:

Store at -20°C. Stable for one year after shipment.

Storage Buffer:

PBS with 0.02% sodium azide and 50% glycerol pH 7.3.

Aliquoting is unnecessary for -20°C storage

*** 20ul sizes contain 0.1% BSA

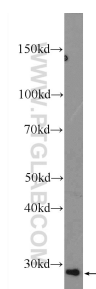
For technical support and original validation data for this product please contact:

T: 1 (888) 4PTGLAB (1-888-478-4522) (toll free in USA), or 1(312) 455-8498 (outside USA)

E: proteintech@ptglab.com
W: ptglab.com

This product is exclusively available under Proteintech Group brand and is not available to purchase from any other manufacturer.

Selected Validation Data



mouse kidney tissue were subjected to SDS PAGE followed by western blot with 15429-1-AP (PPT2 Antibody) at dilution of 1:600 incubated at room temperature for 1.5 hours.