

For Research Use Only

CA11 Polyclonal antibody

Catalog Number:15435-1-AP



Basic Information

Catalog Number: 15435-1-AP	GenBank Accession Number: BC002662	Purification Method: Antigen affinity purification
Size: 150ul , Concentration: 300 ug/ml by Nanodrop and 247 ug/ml by Bradford method using BSA as the standard;	GeneID (NCBI): 770	Recommended Dilutions: WB 1:500-1:1000 IHC 1:20-1:200
Source: Rabbit	UNIPROT ID: O75493	
Isotype: IgG	Full Name: carbonic anhydrase XI	
Immunogen Catalog Number: AG7712	Calculated MW: 36 kDa	
	Observed MW: 36 kDa, 45 kDa	

Applications

Tested Applications: WB, IHC, ELISA	Positive Controls:
Species Specificity: human, mouse, rat	WB : human kidney tissue,
Note-IHC: suggested antigen retrieval with TE buffer pH 9.0; (*) Alternatively, antigen retrieval may be performed with citrate buffer pH 6.0	IHC : human brain tissue, human lung tissue, human ovary tissue, human placenta tissue, human spleen tissue, human testis tissue

Background Information

CA11(Carbonic anhydrase-related protein 11) is also named as CARP2, CARP XI and belongs to the alpha-carbonic anhydrase family. CARP XI is observed in the cerebellum, cerebrum, liver, stomach, small intestine, colon, kidney, and testis by immunohistochemical and in the cerebellum, the most prominent signal is located in the Purkinje cells(PMID:20356370). CARP XI contains a hydrophobic N-terminal region for a possible signal sequence and asparagine glycosylation site and it plays a general role in the human central nervous system(PMID: 10350627).

Storage

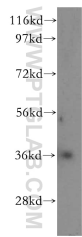
Storage:
Store at -20°C. Stable for one year after shipment.
Storage Buffer:
PBS with 0.02% sodium azide and 50% glycerol pH 7.3.
Aliquoting is unnecessary for -20°C storage

*** 20ul sizes contain 0.1% BSA

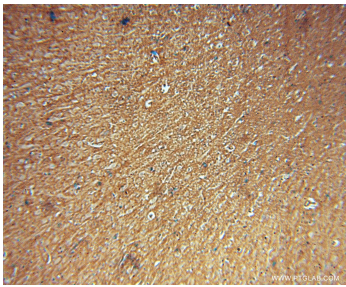
For technical support and original validation data for this product please contact:
T: 1 (888) 4PTGLAB (1-888-478-4522) (toll free in USA), or 1(312) 455-8498 (outside USA)
E: proteintech@ptglab.com
W: ptglab.com

This product is exclusively available under Proteintech Group brand and is not available to purchase from any other manufacturer.

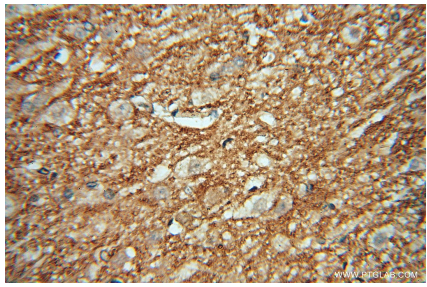
Selected Validation Data



human kidney tissue were subjected to SDS PAGE followed by western blot with 15435-1-AP (CA11 antibody) at dilution of 1:400 incubated at room temperature for 1.5 hours.



Immunohistochemical analysis of paraffin-embedded human brain using 15435-1-AP (CA11 antibody) at dilution of 1:50 (under 10x lens).



Immunohistochemical analysis of paraffin-embedded human brain using 15435-1-AP (CA11 antibody) at dilution of 1:50 (under 40x lens).