

For Research Use Only

EPB41L2 Polyclonal antibody

Catalog Number: 15437-1-AP



Basic Information

Catalog Number: 15437-1-AP	GenBank Accession Number: BC034718	Purification Method: Antigen affinity purification
Size: 150ul , Concentration: 300 µg/ml by Nanodrop and 227 µg/ml by Bradford method using BSA as the standard;	GeneID (NCBI): 2037	Recommended Dilutions: WB 1:500-1:1000 IP 0.5-4.0 ug for IP and 1:500-1:1000 for WB
Source: Rabbit	Full Name: erythrocyte membrane protein band 4.1-like 2	IHC 1:250-1:1000 IF 1:20-1:200
Isotype: IgG	Calculated MW: 112 kDa	
Immunogen Catalog Number: AG3647	Observed MW: 130-150 kDa	

Applications

Tested Applications:
IF, IHC, IP, WB, ELISA

Species Specificity:
human, mouse, rat

Note-IHC: suggested antigen retrieval with TE buffer pH 9.0; (*) Alternatively, antigen retrieval may be performed with citrate buffer pH 6.0

Positive Controls:

WB : HeLa cells, Jurkat cells

IP : HEK-293 cells,

IHC : human ovary tumor tissue,

IF : HeLa cells,

Background Information

Storage

Storage:
Store at -20°C. Stable for one year after shipment.
Storage Buffer:
PBS with 0.02% sodium azide and 50% glycerol pH 7.3.
Aliquoting is unnecessary for -20°C storage

*** 20ul sizes contain 0.1% BSA

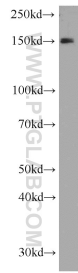
For technical support and original validation data for this product please contact:

T: 1 (888) 4PTGLAB (1-888-478-4522) (toll free in USA), or 1(312) 455-8498 (outside USA)

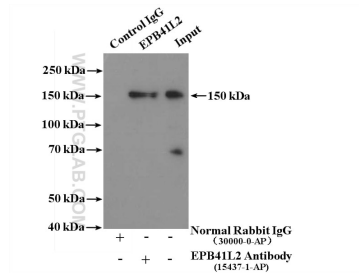
E: proteintech@ptglab.com
W: ptglab.com

This product is exclusively available under Proteintech Group brand and is not available to purchase from any other manufacturer.

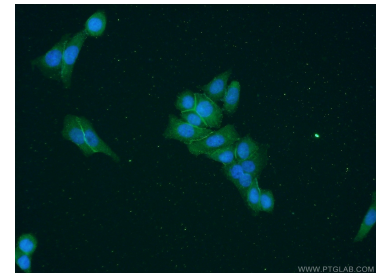
Selected Validation Data



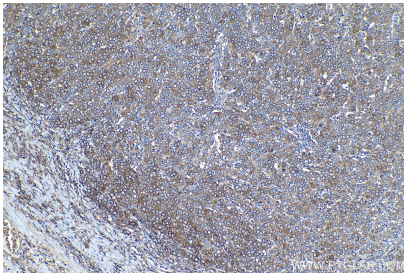
HeLa cells were subjected to SDS PAGE followed by western blot with 15437-1-AP (EPB41L2 antibody) at dilution of 1:800 incubated at room temperature for 1.5 hours.



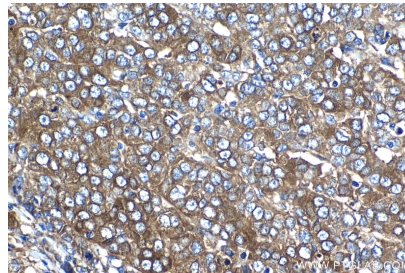
IP Result of anti-EPB41L2 (IP:15437-1-AP, 4 μ g; Detection:15437-1-AP 1:800) with HEK-293 cells lysate 2600 μ g.



Immunofluorescent analysis of HeLa cells using 15437-1-AP (EPB41L2 antibody) at dilution of 1:50 and Alexa Fluor 488-conjugated AffiniPure Goat Anti-Rabbit IgG(H+L).



Immunohistochemical analysis of paraffin-embedded human ovary tumor tissue slide using 15437-1-AP (EPB41L2 antibody) at dilution of 1:500 (under 10x lens). Heat mediated antigen retrieval with Tris-EDTA buffer (pH 9.0).



Immunohistochemical analysis of paraffin-embedded human ovary tumor tissue slide using 15437-1-AP (EPB41L2 antibody) at dilution of 1:500 (under 40x lens). Heat mediated antigen retrieval with Tris-EDTA buffer (pH 9.0).