

For Research Use Only

STK32B Polyclonal antibody

Catalog Number: 15438-1-AP **1 Publications**



Basic Information

| | | |
|--|--|--|
| Catalog Number: 15438-1-AP | GenBank Accession Number: BC038238 | Purification Method: Antigen affinity purification |
| Size: 150ul , Concentration: 133 µg/ml by Nanodrop and 133 µg/ml by Bradford method using BSA as the standard; | GeneID (NCBI): 55351 | Recommended Dilutions: WB 1:500-1:3000 IF 1:200-1:800 |
| Source: Rabbit | Full Name: serine/threonine kinase 32B | |
| Isotype: IgG | Calculated MW: 48 kDa | |
| Immunogen Catalog Number: AG4507 | Observed MW: 43-48 kDa | |

Applications

| | |
|--|--|
| Tested Applications: IF, WB, ELISA | Positive Controls: WB : HeLa cells, HepG2 cells, SH-SY5Y cells IF : U2OS cells, |
| Cited Applications: IHC | |
| Species Specificity: human, mouse, rat | |
| Cited Species: mouse | |

Background Information

Notable Publications

| Author | Pubmed ID | Journal | Application |
|-----------------|-----------|----------|-------------|
| Takashi Matsuda | 38157299 | Cell Rep | IHC |

Storage

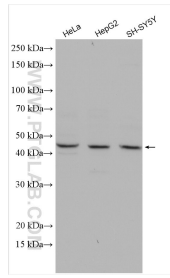
Storage:
Store at -20°C. Stable for one year after shipment.
Storage Buffer:
PBS with 0.02% sodium azide and 50% glycerol pH 7.3.
Aliquoting is unnecessary for -20°C storage

*** 20ul sizes contain 0.1% BSA

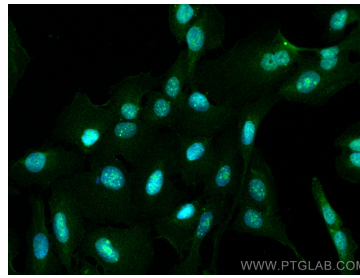
For technical support and original validation data for this product please contact:
T: 1 (888) 4PTGLAB (1-888-478-4522) (toll free in USA), or 1(312) 455-8498 (outside USA)
E: proteintech@ptglab.com
W: ptglab.com

This product is exclusively available under Proteintech Group brand and is not available to purchase from any other manufacturer.

Selected Validation Data



Various lysates were subjected to SDS PAGE followed by western blot with 15438-1-AP (STK32B antibody) at dilution of 1:1500 incubated at room temperature for 1.5 hours.



Immunofluorescent analysis of (4% PFA) fixed U2OS cells using STK32B antibody (15438-1-AP) at dilution of 1:400 and CoraLite®488-Conjugated AffiniPure Goat Anti-Rabbit IgG(H+L).