

# NDUFA6 Polyclonal antibody

Catalog Number: 15445-1-AP

## Basic Information

**Catalog Number:**

15445-1-AP

**Size:**

150ul, Concentration: 180 ug/ml by Nanodrop and 180 ug/ml by Bradford method using BSA as the standard;

**Source:**

Rabbit

**Isotype:**

IgG

**Immunogen Catalog Number:**

AG7593

**GenBank Accession Number:**

BC002772

**GeneID (NCBI):**

4700

**UNIPROT ID:**

P56556

**Full Name:**

NADH dehydrogenase (ubiquinone) 1 alpha subcomplex, 6, 14kDa

**Calculated MW:**

15 kDa

**Observed MW:**

15 kDa

**Purification Method:**

Antigen affinity purification

**Recommended Dilutions:**

WB 1:1000-1:6000

IHC 1:50-1:500

## Applications

**Tested Applications:**

WB, IHC, ELISA

**Species Specificity:**

human, mouse, rat

**Note-IHC: suggested antigen retrieval with TE buffer pH 9.0; (\*) Alternatively, antigen retrieval may be performed with citrate buffer pH 6.0**

**Positive Controls:**

**WB:** mouse heart tissue, human heart tissue, rat heart tissue

**IHC:** human lung cancer tissue,

## Background Information

NDUFA6 (NADH:Ubiquinone Oxidoreductase Subunit A6), also called LYR motif-containing protein 6 (LYRM6), or Complex I-B14 (CI-B14), or NADH-ubiquinone oxidoreductase B14 subunit, is an accessory subunit of the mitochondrial membrane respiratory chain NADH dehydrogenase (Complex I). NDUFA6 participates in the regulation of adipogenic differentiation.

## Storage

**Storage:**

Store at -20°C. Stable for one year after shipment.

**Storage Buffer:**

PBS with 0.02% sodium azide and 50% glycerol pH 7.3.

Aliquoting is unnecessary for -20°C storage

\*\*\* 20ul sizes contain 0.1% BSA

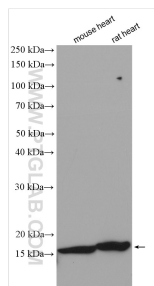
For technical support and original validation data for this product please contact:

T: 1 (888) 4PTGLAB (1-888-478-4522) (toll free in USA), or 1(312) 455-8498 (outside USA)

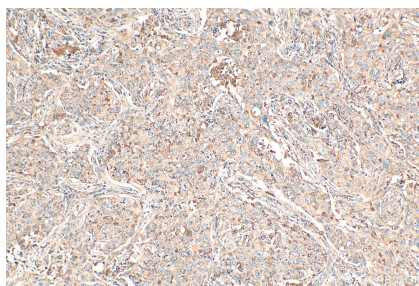
E: [proteintech@ptglab.com](mailto:proteintech@ptglab.com)  
W: [ptglab.com](http://ptglab.com)

This product is exclusively available under Proteintech Group brand and is not available to purchase from any other manufacturer.

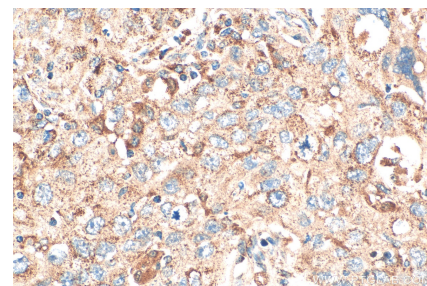
## Selected Validation Data



Various lysates were subjected to SDS PAGE followed by western blot with 15445-1-AP (NDUFA6 antibody) at dilution of 1:3000 incubated at room temperature for 1.5 hours.



Immunohistochemical analysis of paraffin-embedded human lung cancer tissue slide using 15445-1-AP (NDUFA6 antibody) at dilution of 1:200 (under 10x lens). Heat mediated antigen retrieval with Tris-EDTA buffer (pH 9.0).



Immunohistochemical analysis of paraffin-embedded human lung cancer tissue slide using 15445-1-AP (NDUFA6 antibody) at dilution of 1:200 (under 40x lens). Heat mediated antigen retrieval with Tris-EDTA buffer (pH 9.0).