

For Research Use Only

RAB31 Polyclonal antibody

Catalog Number: 15485-1-AP

2 Publications



Basic Information

Catalog Number:

15485-1-AP

Size:

150ul, Concentration: 350 ug/ml by Nanodrop;

Source:

Rabbit

Isotype:

IgG

Immunogen Catalog Number:

AG7833

GenBank Accession Number:

BC001148

GeneID (NCBI):

11031

UNIPROT ID:

Q13636

Full Name:

RAB31, member RAS oncogene family

Calculated MW:

22 kDa

Observed MW:

22 kDa

Purification Method:

Antigen affinity purification

Recommended Dilutions:

WB: 1:500-1:2000

IP: 0.5-4.0 ug for 1.0-3.0 mg of total protein lysate

IHC: 1:50-1:500

Applications

Tested Applications:

WB, IHC, IP, ELISA

Cited Applications:

WB, IF

Species Specificity:

human

Cited Species:

human

Note-IHC: suggested antigen retrieval with TE buffer pH 9.0; (*) Alternatively, antigen retrieval may be performed with citrate buffer pH 6.0

Positive Controls:

WB: HeLa cells, human placenta tissue, K-562 cells, HepG2 cells

IP: K-562 cells,

IHC: human liver cancer tissue, human placenta tissue

Background Information

RAB31, also named as RAB22b, belongs to small GTP-binding proteins of the RAB family. Rab31 localizes in the trans-Golgi network (TGN) and endosomes. It is required for transport of mannose 6-phosphate receptors (MPRs) from the trans-Golgi network (TGN) to endosomes.

Notable Publications

Author	Pubmed ID	Journal	Application
Tang Biao	36085041	J Transl Med	WB
Yu-Chan Chang	38939899	J Extracell Biol	WB,IF

Storage

Storage:

Store at -20°C. Stable for one year after shipment.

Storage Buffer:

PBS with 0.02% sodium azide and 50% glycerol, pH7.3

Aliquoting is unnecessary for -20°C storage

*** 20ul sizes contain 0.1% BSA

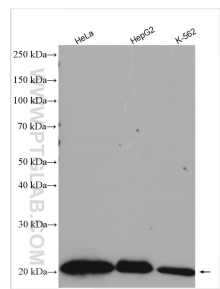
For technical support and original validation data for this product please contact:

T: 1 (888) 4PTGLAB (1-888-478-4522) (toll free in USA), or 1(312) 455-8498 (outside USA)

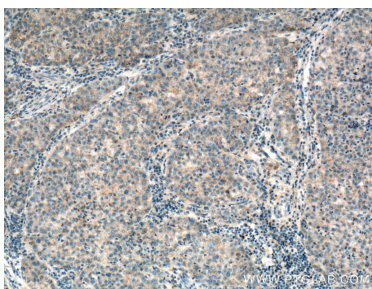
E: proteintech@ptglab.com
W: ptglab.com

This product is exclusively available under Proteintech Group brand and is not available to purchase from any other manufacturer.

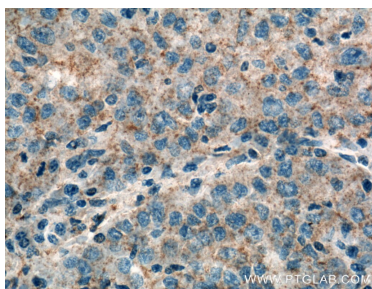
Selected Validation Data



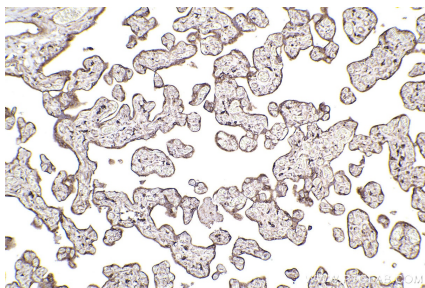
Various lysates were subjected to SDS PAGE followed by western blot with 15485-1-AP (RAB31 antibody) at dilution of 1:1000 incubated at room temperature for 1.5 hours.



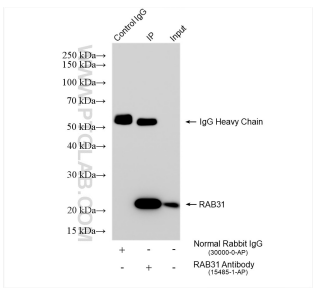
Immunohistochemical analysis of paraffin-embedded human liver cancer tissue slide using 15485-1-AP (RAB31 Antibody) at dilution of 1:200 (under 10x lens). Heat mediated antigen retrieval with Tris-EDTA buffer (pH 9.0).



Immunohistochemical analysis of paraffin-embedded human liver cancer tissue slide using 15485-1-AP (RAB31 Antibody) at dilution of 1:200 (under 40x lens). Heat mediated antigen retrieval with Tris-EDTA buffer (pH 9.0).



Immunohistochemical analysis of paraffin-embedded human placenta tissue slide using 15485-1-AP (RAB31 antibody) at dilution of 1:1000 (under 10x lens). Heat mediated antigen retrieval with Tris-EDTA buffer (pH 9.0).



IP result of anti-RAB31 (IP:15485-1-AP, 4ug; Detection:15485-1-AP 1:1000) with K-562 cells lysate 1640 ug.