

For Research Use Only

# Transgelin-2-specific Polyclonal antibody

Catalog Number: 15508-1-AP

Featured Product

6 Publications



## Basic Information

### Catalog Number:

15508-1-AP

### Size:

150ul, Concentration: 400 ug/ml by Nanodrop and 260 ug/ml by Bradford method using BSA as the standard;

### Source:

Rabbit

### Isotype:

IgG

### GenBank Accession Number:

NM\_003564

### GeneID (NCBI):

8407

### UNIPROT ID:

P37802

### Full Name:

transgelin 2

### Calculated MW:

22 kDa

### Observed MW:

22 kDa

### Purification Method:

Antigen affinity purification

### Recommended Dilutions:

WB 1:500-1:1000

IP 0.5-4.0 ug for 1.0-3.0 mg of total protein lysate

IHC 1:50-1:500

IF/ICC 1:200-1:800

## Applications

### Tested Applications:

WB, IHC, IF/ICC, IP, ELISA

### Cited Applications:

WB, IHC, IF, IP

### Species Specificity:

human

### Cited Species:

human

### Positive Controls:

WB : HeLa cells, HEK-293 cells

IP : L02 cells,

IHC : human oesophagus cancer tissue, human kidney tissue, human liver tissue

IF/ICC : HepG2 cells,

**Note-IHC: suggested antigen retrieval with TE buffer pH 9.0; (\*) Alternatively, antigen retrieval may be performed with citrate buffer pH 6.0**

## Background Information

The transgelin family is a group of proteins that belong to 22 kDa actin-related corpnin superfamily. Of all three isoforms, transgelin 1 is the best characterized. Transgelin 1, also known as SM22 alpha, is a specific marker for differentiated smooth muscle cells. Transgelin 2, also known as SM22 beta, is expressed by both smooth muscle and non-smooth muscle cells in a temporally and spatially regulated pattern. Transgelin 3, also known as NP25, is only found in highly differentiated neuronal cells. This antibody can bind transgelin 2 specifically, but not transgelin 1 or 3.

## Notable Publications

| Author         | Pubmed ID | Journal                 | Application |
|----------------|-----------|-------------------------|-------------|
| Yan-Yan Du     | 26414725  | J Gastroenterol Hepatol | WB, IHC     |
| Yonglian Huang | 34530821  | Cancer Cell Int         | WB          |
| Xiao Yuan Y    | 23056327  | PLoS One                | WB, IF      |

## Storage

### Storage:

Store at -20°C. Stable for one year after shipment.

### Storage Buffer:

PBS with 0.02% sodium azide and 50% glycerol pH 7.3.

Aliquoting is unnecessary for -20°C storage

\*\*\* 20ul sizes contain 0.1% BSA

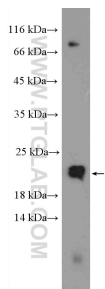
For technical support and original validation data for this product please contact:

T: 1 (888) 4PTGLAB (1-888-478-4522) (toll free in USA), or 1(312) 455-8498 (outside USA)

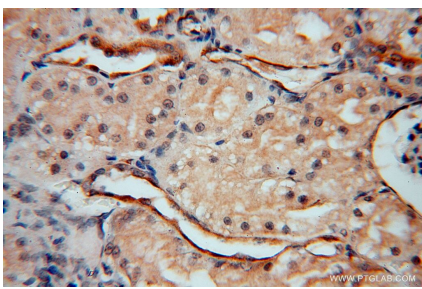
E: proteintech@ptglab.com  
W: ptglab.com

This product is exclusively available under Proteintech Group brand and is not available to purchase from any other manufacturer.

Selected Validation Data



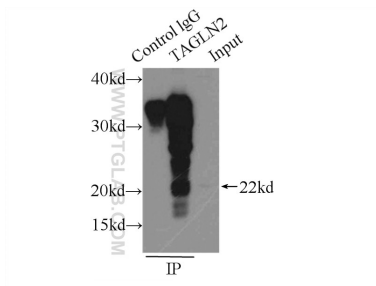
HeLa cells were subjected to SDS PAGE followed by western blot with 15508-1-AP (Transgelin-2-specific antibody) at dilution of 1:600 incubated at room temperature for 1.5 hours.



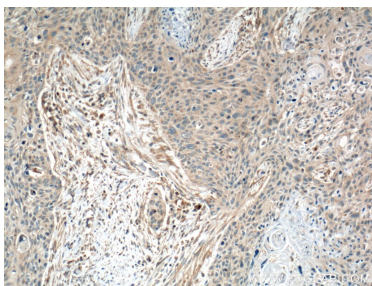
Immunohistochemical analysis of paraffin-embedded human kidney using 15508-1-AP (Transgelin-2-specific antibody) at dilution of 1:50 (under 40x lens).



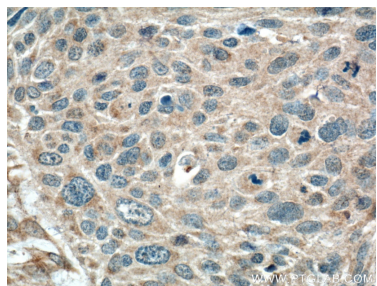
Immunofluorescent analysis of (-20°C Ethanol) fixed HepG2 cells using Transgelin-2-specific antibody (15508-1-AP) at dilution of 1:400 and CoraLite®488-Conjugated Goat Anti-Rabbit IgG(H+L).



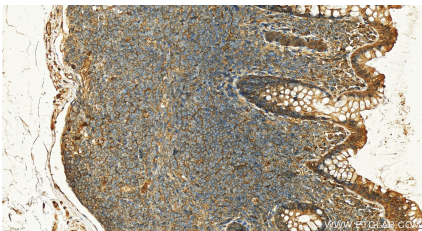
IP result of anti-Transgelin-2-specific (IP:15508-1-AP, 3ug; Detection:15508-1-AP 1:500) with L02 cells lysate 1000ug.



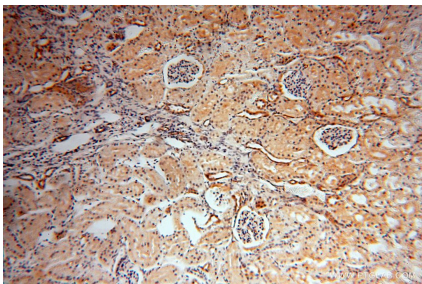
Immunohistochemical analysis of paraffin-embedded human oesophagus cancer tissue slide using 15508-1-AP (Transgelin-2-specific Antibody) at dilution of 1:200 (under 10x lens). Heat mediated antigen retrieval with Tris-EDTA buffer (pH 9.0).



Immunohistochemical analysis of paraffin-embedded human oesophagus cancer tissue slide using 15508-1-AP (Transgelin-2-specific Antibody) at dilution of 1:200 (under 40x lens). Heat mediated antigen retrieval with Tris-EDTA buffer (pH 9.0).



Immunohistochemical analysis of paraffin-embedded human normal colon slide using 15508-1-AP (Transgelin-2-specific antibody) at dilution of 1:200 (under 20x lens). Heat mediated antigen retrieval with Tris-EDTA buffer (pH 9.0).



Immunohistochemical analysis of paraffin-embedded human kidney using 15508-1-AP (Transgelin-2-specific antibody) at dilution of 1:50 (under 10x lens).