

For Research Use Only

MTX1 Polyclonal antibody

Catalog Number: 15529-1-AP

Featured Product

3 Publications



Basic Information

Catalog Number:

15529-1-AP

Size:

150ul, Concentration: 600 ug/ml by Nanodrop and 353 ug/ml by Bradford method using BSA as the standard;

Source:

Rabbit

Isotype:

IgG

Immunogen Catalog Number:

AG7685

GenBank Accession Number:

BC001906

GeneID (NCBI):

4580

UNIPROT ID:

Q13505

Full Name:

metaxin 1

Calculated MW:

51 kDa

Observed MW:

35 kDa

Purification Method:

Antigen affinity purification

Recommended Dilutions:

WB 1:500-1:1000

IP 0.5-4.0 ug for 1.0-3.0 mg of total protein lysate

Applications

Tested Applications:

WB, IP, ELISA

Cited Applications:

WB, IP

Species Specificity:

human

Cited Species:

human, mouse

Positive Controls:

WB : HepG2 cells, A549 cells, Jurkat cells, HeLa cells

IP : MCF-7 cells,

Background Information

METAXINs are proteins located in the outer membrane of the mammalian mitochondrion. METAXIN 1 was characterized firstly and was found to play a role in the import of mitochondrial precursor proteins. It may also play a role in the assembly of b-barrel proteins into the outer membrane. METAXIN1 was reported to be essential for survival of the postimplantation mouse embryo. METAXIN 1 has multiple transcripts. Several isoforms of METAXIN 1 exist due to the alternative splicing, with the predicted MW of 51, 48 and 36 kDa, respectively. Metaxin 1 interacts with metaxin 2, a novel related protein associated with the mammalian mitochondrial outer membrane and form complex in the mitochondrion outer membrane.

Notable Publications

Author	Pubmed ID	Journal	Application
Li Chen	35313046	Hepatology	WB
Li Li	34421355	Int J Biol Sci	WB,IP
Stephen M Coscia	36744380	J Cell Sci	WB

Storage

Storage:

Store at -20°C. Stable for one year after shipment.

Storage Buffer:

PBS with 0.02% sodium azide and 50% glycerol pH 7.3.

Aliquoting is unnecessary for -20°C storage

*** 20ul sizes contain 0.1% BSA

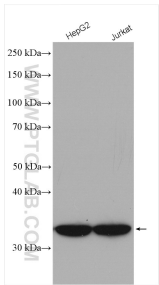
For technical support and original validation data for this product please contact:

T: 1 (888) 4PTGLAB (1-888-478-4522) (toll free in USA), or 1(312) 455-8498 (outside USA)

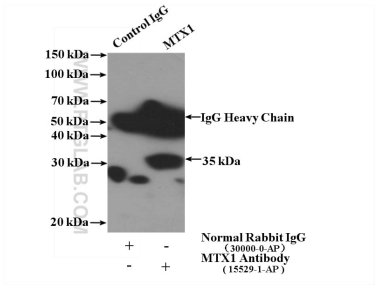
E: proteintech@ptglab.com
W: ptglab.com

This product is exclusively available under Proteintech Group brand and is not available to purchase from any other manufacturer.

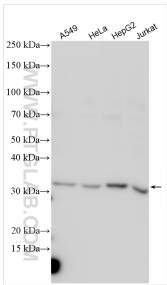
Selected Validation Data



Various lysates were subjected to SDS PAGE followed by western blot with 15529-1-AP (MTX1 antibody) at dilution of 1:600 incubated at room temperature for 1.5 hours.



IP result of anti-MTX1 (IP:15529-1-AP, 4ug; Detection:15529-1-AP 1:700) with MCF-7 cells lysate 1280ug.



Various lysates were subjected to SDS PAGE followed by western blot with 15529-1-AP (MTX1 antibody) at dilution of 1:800 incubated at room temperature for 1.5 hours.