

For Research Use Only

MRPL49 Polyclonal antibody

Catalog Number: 15542-1-AP

6 Publications



Basic Information

Catalog Number:

15542-1-AP

Size:

150ul, Concentration: 500 ug/ml by Nanodrop and 333 ug/ml by Bradford method using BSA as the standard;

Source:

Rabbit

Isotype:

IgG

Immunogen Catalog Number:

AG7898

GenBank Accession Number:

BC004378

GeneID (NCBI):

740

UNIPROT ID:

Q13405

Full Name:

mitochondrial ribosomal protein L49

Calculated MW:

19 kDa

Observed MW:

19 kDa

Purification Method:

Antigen affinity purification

Recommended Dilutions:

WB 1:500-1:1000

IP 0.5-4.0 ug for 1.0-3.0 mg of total protein lysate

IHC 1:50-1:500

Applications

Tested Applications:

WB, IP, IHC, ELISA

Cited Applications:

WB

Species Specificity:

human

Cited Species:

human, mouse

Note-IHC: suggested antigen retrieval with TE buffer pH 9.0; (*) Alternatively, antigen retrieval may be performed with citrate buffer pH 6.0

Positive Controls:

WB : BxPC-3 cells, A549 cells, HeLa cells

IP : HeLa cells,

IHC : human breast cancer tissue,

Background Information

MRPL49, also named as C11orf4, NOF1, or SW-cl.67, is a 166 amino acid protein, which belongs to the ribosomal protein L49em family. MRPL49 localizes in the Mitochondrion and is widely expressed in various tissues. MRPL49 is a regulator of C3 convertase of classical pathway.

Notable Publications

Author	Pubmed ID	Journal	Application
Joachim M Gerhold	26478270	Sci Rep	WB
Kazuo Yamamoto	24656129	Mol Cell	WB
Nina Rajala	24163258	Nucleic Acids Res	WB

Storage

Storage:

Store at -20°C. Stable for one year after shipment.

Storage Buffer:

PBS with 0.02% sodium azide and 50% glycerol pH 7.3.

Aliquoting is unnecessary for -20°C storage

*** 20ul sizes contain 0.1% BSA

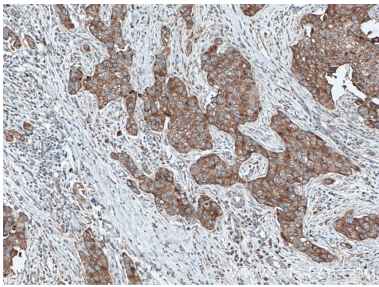
For technical support and original validation data for this product please contact:

T: 1 (888) 4PTGLAB (1-888-478-4522) (toll free in USA), or 1(312) 455-8498 (outside USA)

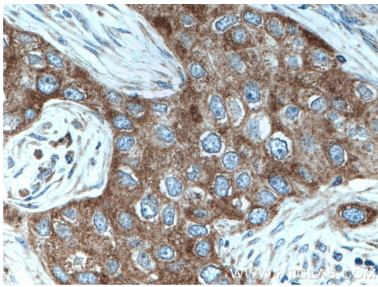
E: proteintech@ptglab.com
W: ptglab.com

This product is exclusively available under Proteintech Group brand and is not available to purchase from any other manufacturer.

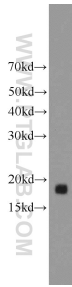
Selected Validation Data



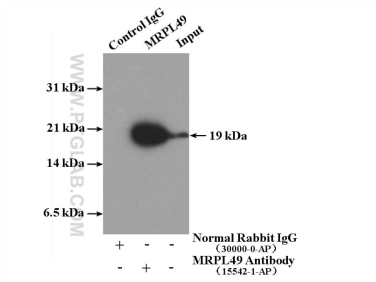
Immunohistochemical analysis of paraffin-embedded human breast cancer tissue slide using 15542-1-AP (MRPL49 antibody) at dilution of 1:200 (under 10x lens. Heat mediated antigen retrieval with Tris-EDTA buffer (pH 9.0).



Immunohistochemical analysis of paraffin-embedded human breast cancer tissue slide using 15542-1-AP (MRPL49 antibody) at dilution of 1:200 (under 40x lens. Heat mediated antigen retrieval with Tris-EDTA buffer (pH 9.0).



BxPC-3 cells were subjected to SDS PAGE followed by western blot with 15542-1-AP (MRPL49 antibody) at dilution of 1:800 incubated at room temperature for 1.5 hours.



IP result of anti-MRPL49 (IP:15542-1-AP, 4ug; Detection:15542-1-AP 1:500) with HeLa cells lysate 3360ug.