

For Research Use Only

# ALDH1B1 Polyclonal antibody

Catalog Number: 15560-1-AP

20 Publications



## Basic Information

### Catalog Number:

15560-1-AP

### Size:

150ul, Concentration: 600 ug/ml by Nanodrop;

### Source:

Rabbit

### Isotype:

IgG

### Immunogen Catalog Number:

AG7144

### GenBank Accession Number:

BC001619

### GeneID (NCBI):

219

### UNIPROT ID:

P30837

### Full Name:

aldehyde dehydrogenase 1 family, member B1

### Calculated MW:

57 kDa

### Observed MW:

55 kDa

### Purification Method:

Antigen affinity purification

### Recommended Dilutions:

WB 1:1000-1:6000

IP 0.5-4.0 ug for 1.0-3.0 mg of total protein lysate

IHC 1:20-1:200

IF/ICC 1:200-1:800

## Applications

### Tested Applications:

WB, IHC, IF/ICC, IP, ELISA

### Cited Applications:

WB, IHC

### Species Specificity:

human, mouse, rat

### Cited Species:

human, mouse, rat

**Note-IHC: suggested antigen retrieval with TE buffer pH 9.0; (\*) Alternatively, antigen retrieval may be performed with citrate buffer pH 6.0**

### Positive Controls:

WB : HepG2 cells, K-562 cells, mouse brain tissue

IP : mouse brain tissue,

IHC : human testis tissue,

IF/ICC : HepG2 cells,

## Background Information

Aldehyde dehydrogenases (ALDHs) belong to a superfamily of NAD(P)<sup>+</sup>-dependent enzymes, which catalyze the oxidation of endogenous and exogenous aldehydes to their corresponding acids. ALDH1B1 is a mitochondrial ALDH that it is dramatically upregulated in human colonic adenocarcinoma, making it a potential biomarker for human colon cancer.(PMID:21216231). ALDH1B1 is a homotetramer expressed in various adult and fetal human tissues including liver, testis, kidney, skeletal muscle, heart, placenta, brain and lung(PMID:18611112).

## Notable Publications

Author	Pubmed ID	Journal	Application
Carlos J Diaz Osterman	31478830	Elife	WB
Agustín Hidalgo-Gutiérrez	34680574	Biomedicines	WB
Akane Kasai	35318866	Am J Physiol Regul Integr Comp Physiol	WB

## Storage

### Storage:

Store at -20°C. Stable for one year after shipment.

### Storage Buffer:

PBS with 0.02% sodium azide and 50% glycerol pH 7.3.

Aliquoting is unnecessary for -20°C storage

\*\*\* 20ul sizes contain 0.1% BSA

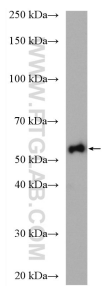
For technical support and original validation data for this product please contact:

T: 1 (888) 4PTGLAB (1-888-478-4522) (toll free in USA), or 1(312) 455-8498 (outside USA)

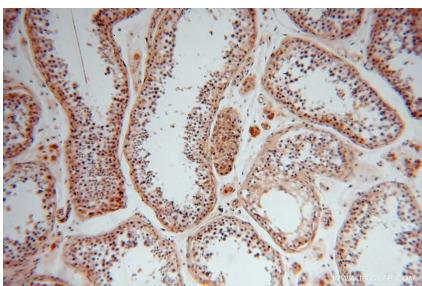
E: proteintech@ptglab.com  
W: ptglab.com

This product is exclusively available under Proteintech Group brand and is not available to purchase from any other manufacturer.

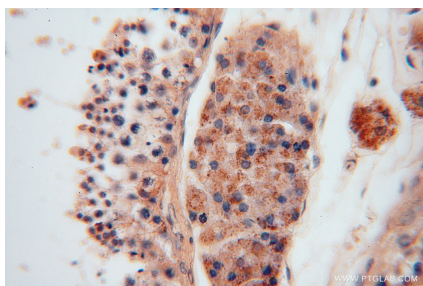
Selected Validation Data



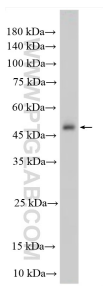
HepG2 cells were subjected to SDS PAGE followed by western blot with 15560-1-AP (ALDH1B1 antibody) at dilution of 1:4000 incubated at room temperature for 1.5 hours.



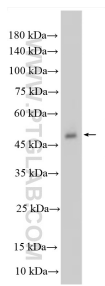
Immunohistochemical analysis of paraffin-embedded human testis using 15560-1-AP (ALDH1B1 antibody) at dilution of 1:100 (under 10x lens).



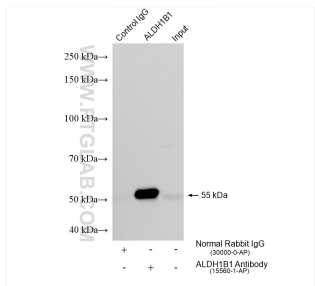
Immunohistochemical analysis of paraffin-embedded human testis using 15560-1-AP (ALDH1B1 antibody) at dilution of 1:100 (under 40x lens).



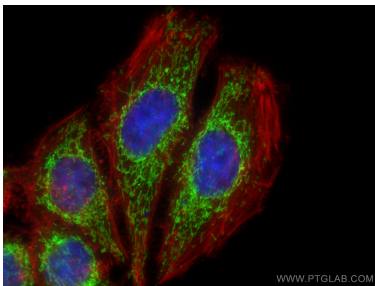
K-562 cells were subjected to SDS PAGE followed by western blot with 15560-1-AP (ALDH1B1 antibody) at dilution of 1:6000 incubated at room temperature for 1.5 hours.



HepG2 cells were subjected to SDS PAGE followed by western blot with 15560-1-AP (ALDH1B1 antibody) at dilution of 1:6000 incubated at room temperature for 1.5 hours.



IP result of anti-ALDH1B1 (IP:15560-1-AP, 4ug; Detection:15560-1-AP 1:20000) with mouse brain tissue lysate 2100 ug.



Immunofluorescent analysis of (4% PFA) fixed HepG2 cells using ALDH1B1 antibody (15560-1-AP) at dilution of 1:400 and CoraLite® 488-Conjugated Goat Anti-Rabbit IgG(H+L) (SA00013-2), CL594-Phalloidin (red).