

For Research Use Only

SELS Polyclonal antibody

Catalog Number:15591-1-AP

Featured Product

26 Publications



Basic Information

Catalog Number:

15591-1-AP

Size:

150ul , Concentration: 600 ug/ml by Nanodrop and 333 ug/ml by Bradford method using BSA as the standard;

Source:

Rabbit

Isotype:

IgG

Immunogen Catalog Number:

AG7928

GenBank Accession Number:

BC005840

GeneID (NCBI):

55829

UNIPROT ID:

Q9BQE4

Full Name:

selenoprotein S

Calculated MW:

21 kDa

Observed MW:

21 kDa

Purification Method:

Antigen affinity purification

Recommended Dilutions:

WB 1:500-1:2000

IP 0.5-4.0 ug for 1.0-3.0 mg of total protein lysate

IHC 1:50-1:500

Applications

Tested Applications:

WB, IHC, IP, ELISA

Cited Applications:

WB, IHC, IF

Species Specificity:

human, mouse, rat

Cited Species:

human, mouse, rat, pig, chicken

Note-IHC: suggested antigen retrieval with TE buffer pH 9.0; (*) Alternatively, antigen retrieval may be performed with citrate buffer pH 6.0

Positive Controls:

WB : rat brain tissue, HeLa cells

IP : HepG2 cells,

IHC : human intrahepatic cholangiocarcinoma tissue, human stomach tissue

Background Information

SELS, also named as VIMP and SEPS1, plays an important role in the production of inflammatory cytokines and its expression is activated by endoplasmic reticulum (ER) stress. It probably acts by serving as a linker between DERL1 and VCP.

Notable Publications

Author	Pubmed ID	Journal	Application
Yan Liu	34679693	Antioxidants (Basel)	WB
Zixin Min	30247797	J Cell Mol Med	IHC, WB
Zinan Wang	34715363	Int J Biochem Cell Biol	WB

Storage

Storage:

Store at -20°C. Stable for one year after shipment.

Storage Buffer:

PBS with 0.02% sodium azide and 50% glycerol pH 7.3.

Aliquoting is unnecessary for -20°C storage

*** 20ul sizes contain 0.1% BSA

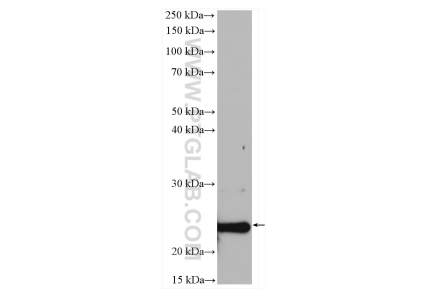
For technical support and original validation data for this product please contact:

T: 1 (888) 4PTGLAB (1-888-478-4522) (toll free in USA), or 1(312) 455-8498 (outside USA)

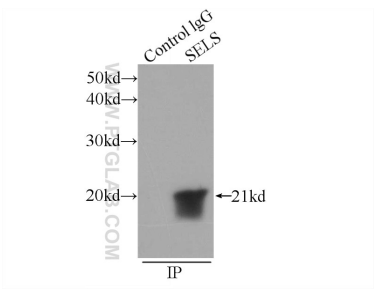
E: proteintech@ptglab.com
W: ptglab.com

This product is exclusively available under Proteintech Group brand and is not available to purchase from any other manufacturer.

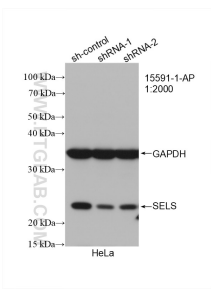
Selected Validation Data



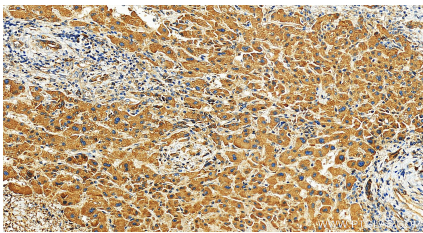
rat brain tissue were subjected to SDS PAGE followed by western blot with 15591-1-AP (SELS antibody) at dilution of 1:1000 incubated at room temperature for 1.5 hours.



IP result of anti-SELS (IP:15591-1-AP, 3ug; Detection:15591-1-AP 1:500) with HepG2 cells lysate 600ug.



WB result of SELS antibody (15591-1-AP; 1:2000; incubated at room temperature for 1.5 hours) with sh-Control and sh-SELS transfected HeLa cells.



Immunohistochemical analysis of paraffin-embedded human intrahepatic cholangiocarcinoma tissue slide using 15591-1-AP (SELS antibody) at dilution of 1:200 (under 20x lens). Heat mediated antigen retrieval with Tris-EDTA buffer (pH 9.0).