

For Research Use Only

# RNASEH1 Polyclonal antibody

Catalog Number: 15606-1-AP

Featured Product

52 Publications



## Basic Information

### Catalog Number:

15606-1-AP

### Size:

150ul, Concentration: 650 ug/ml by Nanodrop;

### Source:

Rabbit

### Isotype:

IgG

### Immunogen Catalog Number:

AG7990

### GenBank Accession Number:

BC002973

### GeneID (NCBI):

246243

### UNIPROT ID:

O60930

### Full Name:

ribonuclease H1

### Calculated MW:

32 kDa

### Observed MW:

32 kDa

### Purification Method:

Antigen affinity purification

### Recommended Dilutions:

WB 1:1000-1:5000

IP 0.5-4.0 ug for 1.0-3.0 mg of total protein lysate

IF/ICC 1:50-1:500

## Applications

### Tested Applications:

WB, IF/ICC, IP, ELISA

### Cited Applications:

WB, IHC, IF, ChIP

### Species Specificity:

human, mouse, rat

### Cited Species:

human, mouse

### Positive Controls:

WB : HeLa cells, U2OS cells

IP : HeLa cells,

IF/ICC : HeLa cells,

## Background Information

Ribonucleases H are enzymes that cleave the RNA of RNA/DNA hybrids that form during replication and repair and which could lead to DNA instability if they were not processed. Eukaryotic RNases H are larger and more complex than their prokaryotic counterparts [PMID:12667461]. Eukaryotic RNase H1 has acquired a Hybrid Binding Domain that confers processivity and affinity for the substrate. Because of its essential role and its similarities in structure and enzymatic mechanism to the RNase H of HIV reverse transcriptase, RNASEH1 has been implicated in mitochondrial DNA replication during mouse development [PMID:19228196].

## Notable Publications

Author	Pubmed ID	Journal	Application
Negin Khosraviani	36178790	STAR Protoc	WB
Sonia Jimeno	34535666	Nat Commun	IF
Yanli Liu	36114190	Nat Commun	IF

## Storage

### Storage:

Store at -20°C. Stable for one year after shipment.

### Storage Buffer:

PBS with 0.02% sodium azide and 50% glycerol, pH7.3

Aliquoting is unnecessary for -20°C storage

\*\*\* 20ul sizes contain 0.1% BSA

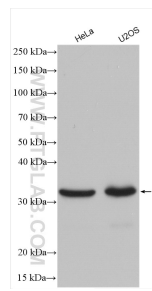
For technical support and original validation data for this product please contact:

T: 1 (888) 4PTGLAB (1-888-478-4522) (toll free in USA), or 1(312) 455-8498 (outside USA)

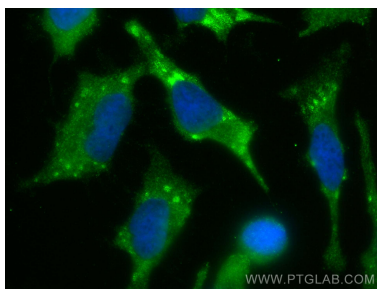
E: [proteintech@ptglab.com](mailto:proteintech@ptglab.com)  
W: [ptglab.com](http://ptglab.com)

This product is exclusively available under Proteintech Group brand and is not available to purchase from any other manufacturer.

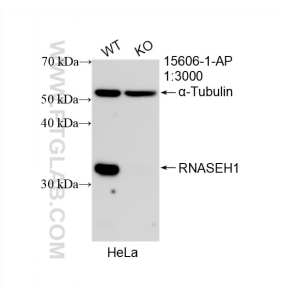
Selected Validation Data



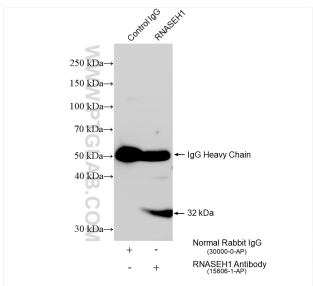
Various lysates were subjected to SDS PAGE followed by western blot with 15606-1-AP (RNASEH1 antibody) at dilution of 1:2500 incubated at room temperature for 1.5 hours.



Immunofluorescent analysis of (-20°C Methanol) fixed HeLa cells using RNASEH1 antibody (15606-1-AP) at dilution of 1:200 and CoraLite® 488-Conjugated AffiniPure Goat Anti-Rabbit IgG(H+L).



WB result of RNASEH1 antibody (15606-1-AP; 1:3000; room temperature for 1.5 hours) with wild-type and RNASEH1 knockout HeLa cells.



IP result of anti-RNASEH1 (IP:15606-1-AP, 4ug; Detection:15606-1-AP 1:3000) with HeLa cells lysate 1750 ug.