

For Research Use Only

Fibronectin Polyclonal antibody

Catalog Number: 15613-1-AP

Featured Product

708 Publications



Basic Information

Catalog Number:

15613-1-AP

Size:

150ul, Concentration: 700 ug/ml by Nanodrop;

Source:

Rabbit

Isotype:

IgG

Immunogen Catalog Number:

AG8004

GenBank Accession Number:

BC005858

GeneID (NCBI):

2335

UNIPROT ID:

P02751

Full Name:

fibronectin 1

Calculated MW:

2386 aa, 263 kDa

Observed MW:

250-275 kDa

Purification Method:

Antigen affinity purification

Recommended Dilutions:

WB 1:2000-1:20000

IP 0.5-4.0 ug for 1.0-3.0 mg of total protein lysate

IHC 1:2000-1:8000

IF/ICC 1:50-1:500

Applications

Tested Applications:

WB, IF/ICC, FC (Intra), IP, ELISA

Cited Applications:

WB, IF, IP, ELISA

Species Specificity:

human, mouse, rat

Cited Species:

human, mouse, rat, pig, rabbit, bovine, hamster, sheep, medaka embryos

Note-IHC: suggested antigen retrieval with TE buffer pH 9.0; (*) Alternatively, antigen retrieval may be performed with citrate buffer pH 6.0

Positive Controls:

WB : human plasma, NIH/3T3 cells, MDA-MB-453s cells

IP : NIH/3T3 cells,

IHC : human normal colon,

IF/ICC : NIH/3T3 cells,

Background Information

Fibronectin 1 (FN1) is a high molecular weight glycoprotein which exists in both a soluble form in plasma (plasma FN1) and other body fluids and an insoluble form in the extracellular matrix (cellular FN1). Plasma FN1 (dimeric form) is secreted by hepatocytes. Cellular FN (dimeric or cross-linked multimeric forms), made by fibroblasts, epithelial and other cell types, is deposited as fibrils in the extracellular matrix. FN1 binds to cell surfaces through integrins and to various compounds including collagen, fibrin and heparin. It is involved in cell adhesion and migration processes including embryogenesis, wound healing, hemostasis, host defense, and metastasis. (PMID: 7276612; 12244123; 12847088)

Notable Publications

Author	Pubmed ID	Journal	Application
Dong Zeng	32979359	Life Sci	WB
Bing Sun	27684953	PLoS One	WB
Chen Chen	36212944	Evid Based Complement Alternat Med	IF

Storage

Storage:

Store at -20°C. Stable for one year after shipment.

Storage Buffer:

PBS with 0.02% sodium azide and 50% glycerol, pH7.3

Aliquoting is unnecessary for -20°C storage

*** 20ul sizes contain 0.1% BSA

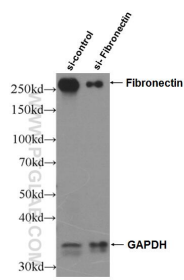
For technical support and original validation data for this product please contact:

T: 1 (888) 4PTGLAB (1-888-478-4522) (toll free in USA), or 1(312) 455-8498 (outside USA)

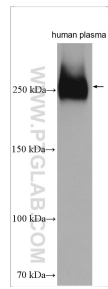
E: proteintech@ptglab.com
W: ptglab.com

This product is exclusively available under Proteintech Group brand and is not available to purchase from any other manufacturer.

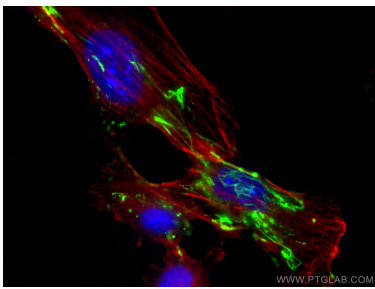
Selected Validation Data



WB result of Fibronectin antibody (15613-1-AP; 1:2000; incubated at room temperature for 1.5 hours) with sh-Control and sh-Fibronectin transfected NIH/3T3 cells.



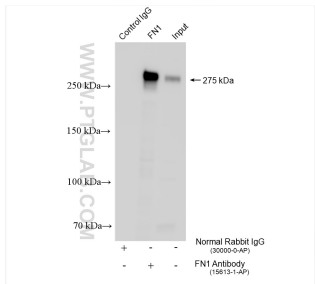
human plasma were subjected to SDS PAGE followed by western blot with 15613-1-AP (Fibronectin antibody) at dilution of 1:20000 incubated at room temperature for 1.5 hours.



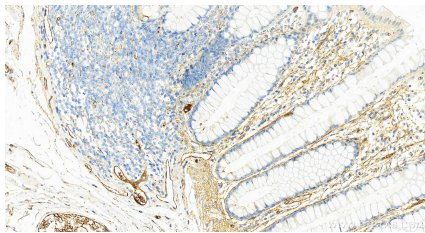
Immunofluorescent analysis of (-20°C Ethanol) fixed NIH/3T3 cells using Fibronectin antibody (15613-1-AP) at dilution of 1:200 and CoraLite®488-Conjugated AffiniPure Goat Anti-Rabbit IgG(H+L), CL594-Phalloidin (red).



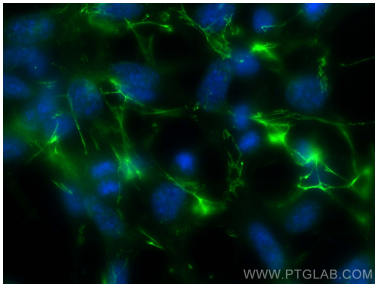
Various lysates were subjected to SDS PAGE followed by western blot with 15613-1-AP (Fibronectin antibody) at dilution of 1:50000 incubated at room temperature for 1.5 hours.



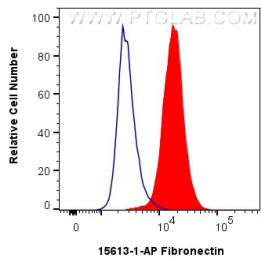
IP result of anti-Fibronectin (IP:15613-1-AP, 4ug; Detection:15613-1-AP 1:3000) with NIH/3T3 cells lysate 1680 ug.



Immunohistochemical analysis of paraffin-embedded human normal colon slide using 15613-1-AP (Fibronectin antibody) at dilution of 1:4000 (under 20x lens). Heat mediated antigen retrieval with Tris-EDTA buffer (pH 9.0).



Immunofluorescent analysis of (-20°C Ethanol) fixed NIH/3T3 cells using Fibronectin antibody (15613-1-AP) at dilution of 1:200 and Multi-rAb CoraLite® Plus 488-Goat Anti-Rabbit Recombinant Secondary Antibody (H+L) (RGAR002).



1X10⁶ NIH/3T3 cells were intracellularly stained with 0.4 ug Anti-Human Fibronectin (15613-1-AP) and CoraLite®488-Conjugated AffiniPure Goat Anti-Rabbit IgG(H+L) at dilution 1:1000 (red), or 0.4 ug Rabbit IgG control Rabbit PolyAb (30000-O-AP, Clone:) (blue). Cells were fixed with 4% PFA and permeabilized with Flow Cytometry Perm Buffer (PF00011-C).