

For Research Use Only

SH2D3A Polyclonal antibody

Catalog Number: 15641-1-AP



Basic Information

Catalog Number: 15641-1-AP	GenBank Accession Number: BC006281	Purification Method: Antigen affinity purification
Size: 150ul , Concentration: 400 µg/ml by Nanodrop and 267 µg/ml by Bradford method using BSA as the standard;	GeneID (NCBI): 10045	Recommended Dilutions: WB 1:500-1:1000 IF 1:20-1:200
Source: Rabbit	Full Name: SH2 domain containing 3A	
Isotype: IgG	Calculated MW: 576 aa, 63 kDa	
Immunogen Catalog Number: AG8132	Observed MW: 64 kDa	

Applications

Tested Applications: IF, WB, ELISA	Positive Controls:
Species Specificity: human	WB : HeLa cells, HEK-293 cells, HepG2 cells IF : HeLa cells,

Background Information

SH2 domain containing 3A (SH2D3A) is a novel SH2-containing protein 1 (NSP1) with proline-rich domains and therefore probably involved in the signal-transduction of some ligand-activated tyrosine kinase receptors. Three phosphorylation sites of NSP1 have been found to date. NSP1 may be located at cell membrane play a role in JNK activation.

Storage

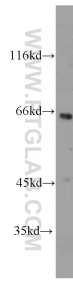
Storage:
Store at -20°C. Stable for one year after shipment.
Storage Buffer:
PBS with 0.02% sodium azide and 50% glycerol pH 7.3.
Aliquoting is unnecessary for -20°C storage

*** 20ul sizes contain 0.1% BSA

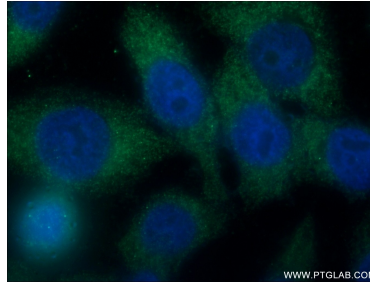
For technical support and original validation data for this product please contact:
T: 1 (888) 4PTGLAB (1-888-478-4522) (toll free in USA), or 1(312) 455-8498 (outside USA)
E: proteintech@ptglab.com
W: ptglab.com

This product is exclusively available under Proteintech Group brand and is not available to purchase from any other manufacturer.

Selected Validation Data



HeLa cells were subjected to SDS PAGE followed by western blot with 15641-1-AP (SH2D3A antibody) at dilution of 1:1000 incubated at room temperature for 1.5 hours.



Immunofluorescent analysis of HeLa cells using 15641-1-AP (SH2D3A antibody) at dilution of 1:50 and Alexa Fluor 488-conjugated AffiniPure Goat Anti-Rabbit IgG(H+L).