

PFKL Polyclonal antibody

Catalog Number: 15652-1-AP

7 Publications

Basic Information

Catalog Number:

15652-1-AP

Size:

150ul , Concentration: 173 µg/ml by Bradford method using BSA as the standard;

Source:

Rabbit

Isotype:

IgG

Immunogen Catalog Number:

AG8250

GenBank Accession Number:

BC008964

GeneID (NCBI):

5211

UNIPROT ID:

P17858

Full Name:

phosphofructokinase, liver

Calculated MW:

85 kDa

Observed MW:

85 kDa

Purification Method:

Antigen affinity purification

Recommended Dilutions:

WB 1:500-1:1000

IHC 1:20-1:200

Applications

Tested Applications:

WB, IHC, ELISA

Cited Applications:

WB

Species Specificity:

human, mouse, rat

Cited Species:

human, mouse

Positive Controls:

WB : HeLa cells,

IHC : human liver cancer tissue,

Note-IHC: suggested antigen retrieval with TE buffer pH 9.0; (*) Alternatively, antigen retrieval may be performed with citrate buffer pH 6.0

Background Information

PFKL(6-phosphofructokinase, liver type) is also named as PFK-B and belongs to the phosphofructokinase family. The PFKL gene encodes the liver isoform of phosphofructokinase (PFK)(ATP:D-fructose-6-phosphate-1-phosphotransferase). PFK catalyzes the irreversible conversion of fructose-6-phosphate to fructose-1,6-bisphosphate and is a key regulatory enzyme in glycolysis. In human beings, PFK exists as a system of three subunits: these are the muscle(PFKM), liver(PFKL), and platelet(PFKP) PFKs(PMID: 2139864). It has 2 isoforms produced by alternative splicing.

Notable Publications

Author	Pubmed ID	Journal	Application
Xiao Li	29845188	Int J Oncol	WB
Jun Wang	27049827	Oncotarget	WB
Xiuying Zhong	28325773	EMBO Rep	WB

Storage

Storage:

Store at -20°C. Stable for one year after shipment.

Storage Buffer:

PBS with 0.02% sodium azide and 50% glycerol pH 7.3.

Aliquoting is unnecessary for -20°C storage

*** 20ul sizes contain 0.1% BSA

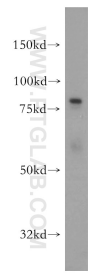
For technical support and original validation data for this product please contact:

T: 1 (888) 4PTGLAB (1-888-478-4522) (toll free in USA), or 1(312) 455-8498 (outside USA)

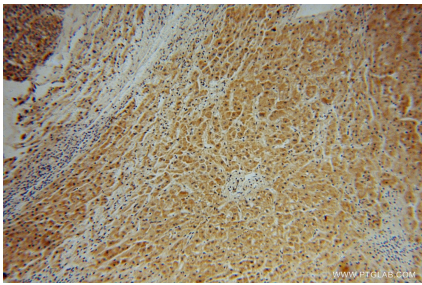
E: proteintech@ptglab.com
W: ptglab.com

This product is exclusively available under Proteintech Group brand and is not available to purchase from any other manufacturer.

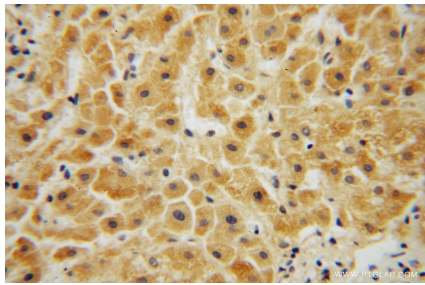
Selected Validation Data



HeLa cells were subjected to SDS PAGE followed by western blot with 15652-1-AP (PFKL antibody) at dilution of 1:500 incubated at room temperature for 1.5 hours.



Immunohistochemical analysis of paraffin-embedded human liver cancer using 15652-1-AP (PFKL antibody) at dilution of 1:50 (under 10x lens).



Immunohistochemical analysis of paraffin-embedded human liver cancer using 15652-1-AP (PFKL antibody) at dilution of 1:50 (under 40x lens).