

For Research Use Only

PIWIL1 Polyclonal antibody

Catalog Number: 15659-1-AP

8 Publications



Basic Information

Catalog Number:

15659-1-AP

Size:

150ul, Concentration: 600 ug/ml by Nanodrop;

Source:

Rabbit

Isotype:

IgG

Immunogen Catalog Number:

AG8056

GenBank Accession Number:

BC028581

GeneID (NCBI):

9271

UNIPROT ID:

Q96J94

Full Name:

piwi-like 1 (Drosophila)

Calculated MW:

99 kDa

Observed MW:

85-95 kDa

Purification Method:

Antigen affinity purification

Recommended Dilutions:

WB 1:500-1:1000

IP 0.5-4.0 ug for 1.0-3.0 mg of total protein lysate

IHC 1:20-1:200

IF-P 1:50-1:500

IF/ICC 1:20-1:200

Applications

Tested Applications:

WB, IHC, IF/ICC, IF-P, IP, ELISA

Cited Applications:

WB, IF, IP

Species Specificity:

human, mouse

Cited Species:

human, mouse, chicken

Note-IHC: suggested antigen retrieval with TE buffer pH 9.0; (*) Alternatively, antigen retrieval may be performed with citrate buffer pH 6.0

Positive Controls:

WB : human testis tissue, mouse testis tissue

IP : mouse testis tissue,

IHC : human testis tissue, human liver cancer tissue, human prostate cancer tissue

IF-P : mouse testis tissue,

IF/ICC : HepG2 cells,

Notable Publications

Author	Pubmed ID	Journal	Application
Bethany Baumann	30905091	Prostate	IF
Yi-Ting Cai	34143903	Andrologia	WB
Qi Xie	35093098	J Transl Med	WB

Storage

Storage:

Store at -20°C. Stable for one year after shipment.

Storage Buffer:

PBS with 0.02% sodium azide and 50% glycerol pH 7.3.

Aliquoting is unnecessary for -20°C storage

*** 20ul sizes contain 0.1% BSA

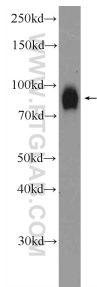
For technical support and original validation data for this product please contact:

T: 1 (888) 4PTGLAB (1-888-478-4522) (toll free in USA), or 1(312) 455-8498 (outside USA)

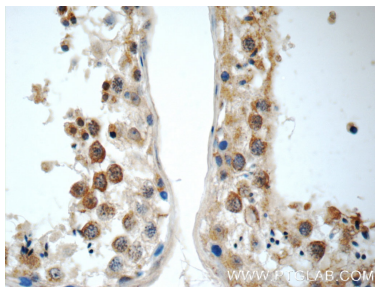
E: proteintech@ptglab.com
W: ptglab.com

This product is exclusively available under Proteintech Group brand and is not available to purchase from any other manufacturer.

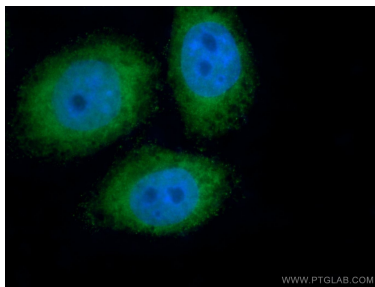
Selected Validation Data



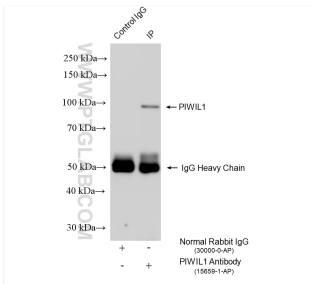
human testis tissue were subjected to SDS PAGE followed by western blot with 15659-1-AP (PIWIL1 Antibody) at dilution of 1:600 incubated at room temperature for 1.5 hours.



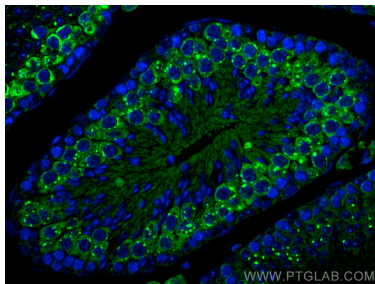
Immunohistochemical analysis of paraffin-embedded human testis tissue slide using 15659-1-AP (PIWIL1 Antibody) at dilution of 1:50 (under 40x lens).



Immunofluorescent analysis of HepG2 cells using 15659-1-AP (PIWIL1 antibody) at dilution of 1:50 and Alexa Fluor 488-conjugated AffiniPure Goat Anti-Rabbit IgG(H+L).



IP result of anti-PIWIL1 (IP:15659-1-AP, 4ug; Detection:15659-1-AP 1:2000) with mouse testis tissue lysate 2400 ug.



Immunofluorescent analysis of (4% PFA) fixed paraffin-embedded mouse testis tissue using PIWIL1 antibody (15659-1-AP) at dilution of 1:200 and Coralite® 488-Conjugated Goat Anti-Rabbit IgG(H+L) (SA00013-2). Heat mediated antigen retrieval with Tris-EDTA buffer (pH 9.0).